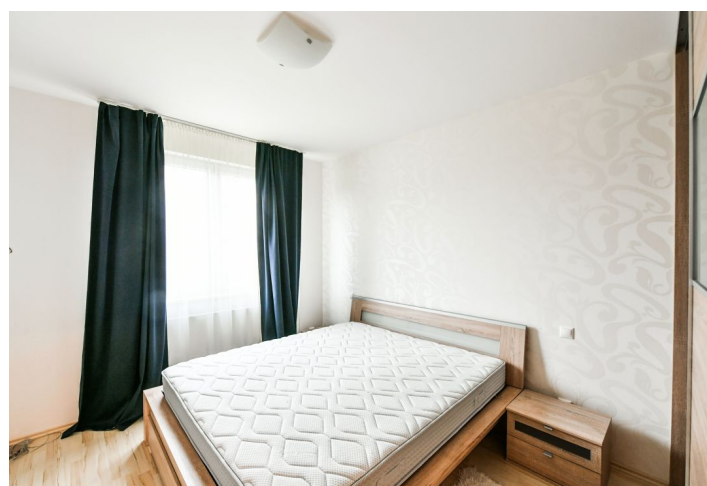
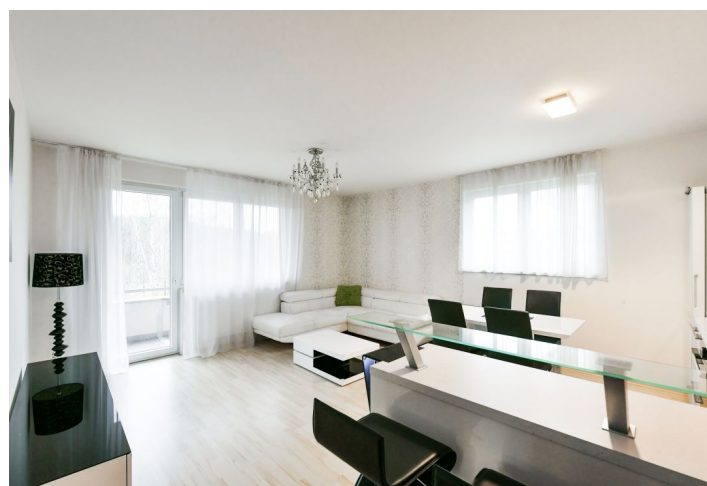




Apartment One-bedroom (2+kk)

Rented

52 m², Prague 4, Háje, Jurkovičova





Apartment One-bedroom (2+kk)

Rented

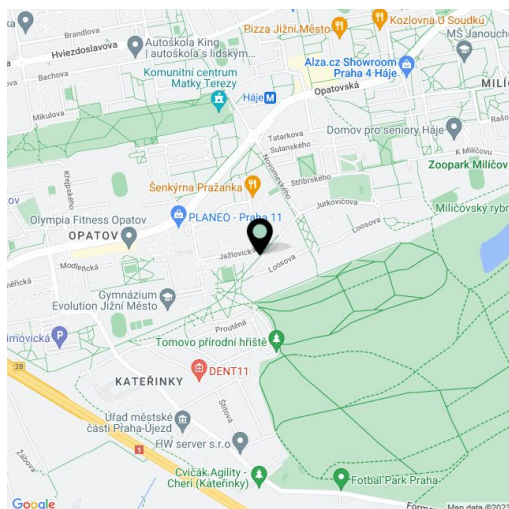
52 m², Prague 4, Háje, Jurkovičova

Total area	61 m²
Floor area*	52 m²
Balcony	9 m²
Parking	Garage parking.
Garage	Yes
Cellar	Yes
PENB	C
Reference number	38117
Available from	Immediately

Benefiting from a balcony and direct views of the adjacent forest, this 1-bedroom apartment is on the first floor of a modern building with a lift and underground parking, part of the contemporary residential complex **Milíčovský háj** in Prague 4. Located on the edge of the Milíčovský forest, close to several ponds, the Hostivař Forest Park and the Hostivař Dam, with good amenities in the vicinity and bus connections, about a ten min. walk to Háje metro station, line C.

The apartment includes a living room with a fully fitted open plan kitchen, a **walk-in closet** and access to the **balcony**, a bedroom with built-in wardrobes, a bathroom with a bathtub and a shower screen, a separate bidet toilet, and an entrance hall.

Laminated floors, tiles, security entry door, central heating, washing machine, dishwasher, induction cooktop, basic kitchenware, garden furniture, **cellar**, bike / pram storage, chip entry. **One garage parking** is included in the rent. Monthly deposit for service charges heating and water CZK 2,800. Electricity is billed separately.



* Area of the unit according to the Civil Code. The area consists of the sum total area of the entire unit bounded by perimeter walls.