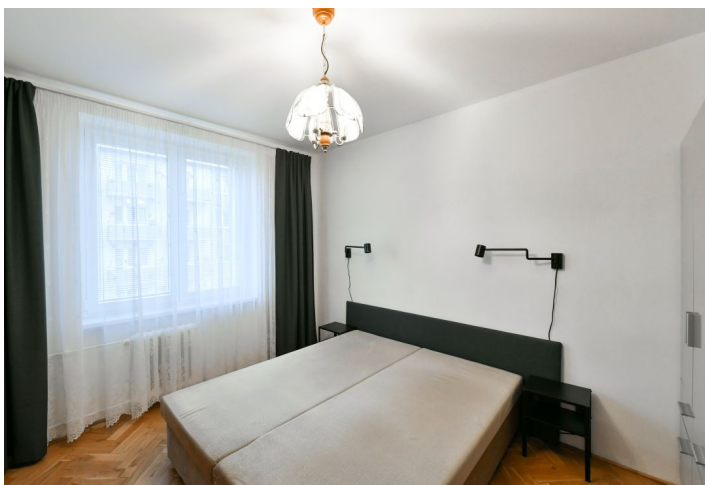




## Apartment One-bedroom (2+1)

Rented

49.3 m<sup>2</sup>, Prague 9, Hloubětín, Sadská





## Apartment One-bedroom (2+1)

Rented

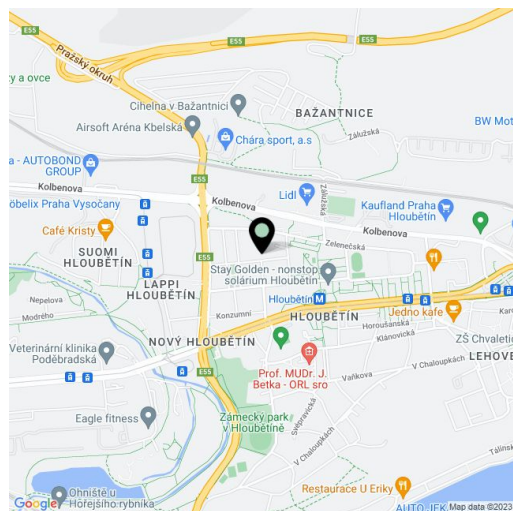
49.3 m<sup>2</sup>, Prague 9, Hloubětín, Sadská

Total area	51 m <sup>2</sup>
Floor area*	49 m <sup>2</sup>
Balcony	2 m <sup>2</sup>
Parking	-
Cellar	Yes
PENB	C
Reference number	38131
Available from	Immediately

Apartment within walking distance of Hloubětín metro station. This newly renovated, fully furnished 1-bedroom apartment with a balcony is situated on the second floor of a well kept residential building with no lift. Set in a quiet street in Prague 9 with lots of greenery, within easy reach of full amenities and services, near a children's playground with a workout area, a popular bike path, and a sports center with a swimming pool. Conveniently located for Mladá Boleslav and Hradec Králové highways (D10 and D11).

The apartment includes a living room with a **south-west oriented balcony**, a fully fitted eat-in kitchen, a bedroom, a bathroom with a large walk-in shower, a separate toilet, and an entrance hall with built-in wardrobes.

**Solid wood parquet floors**, vinyl flooring, tiles, central heating, washing machine, dishwasher, microwave oven, **cellar**. Monthly deposit for service charges, water and heating: CZK 2800 for one person. Electricity is billed separately.



\* Area of the unit according to the Civil Code. The area consists of the sum total area of the entire unit bounded by perimeter walls.