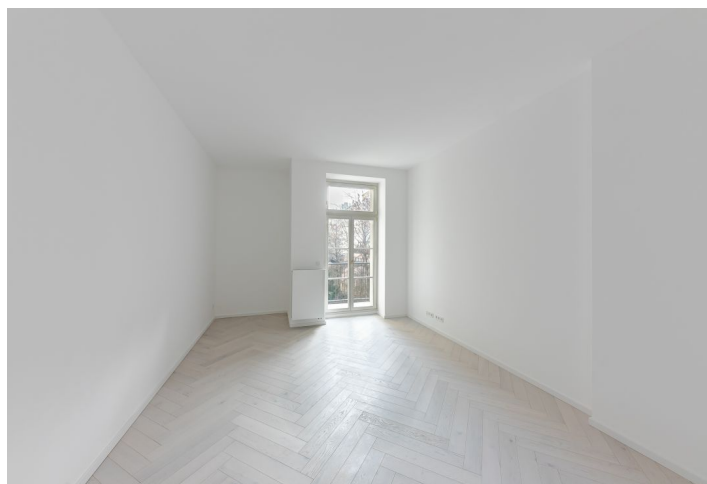
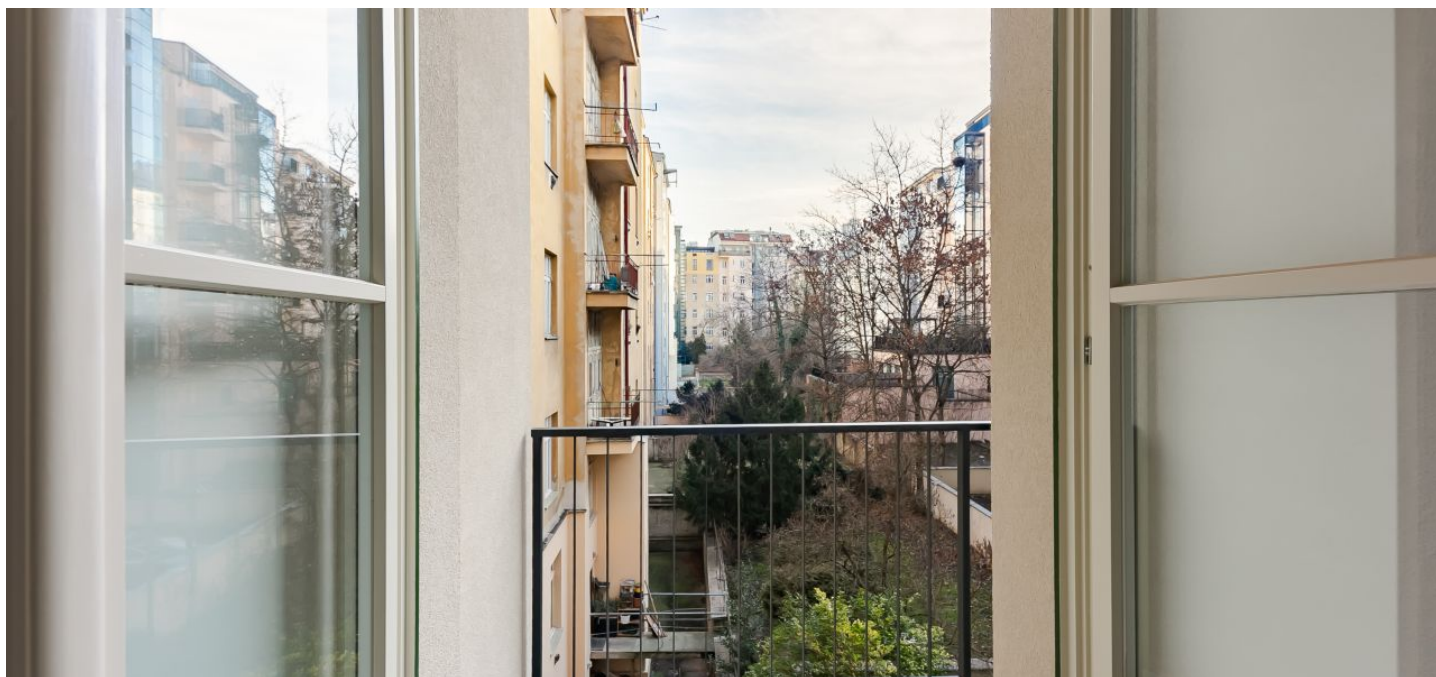




Apartment One-bedroom (2+kk)

Sold

66.1 m², Prague 2, Vinohrady, Mánesova





Apartment One-bedroom (2+kk)

Sold66.1 m², Prague 2, Vinohrady, Mánesova

Total area	68 m ²
Floor area*	66 m ²
Balcony	2 m ²
Parking	-
Cellar	-
PENB	G
Reference number	38147

We have the exclusive right to sell this apartment with a balcony, that is finished to a high standard and located in the recently completed Mánesova78 Residence designed by the renowned OOOOX architectural studio. It is situated at an attractive address in the city center, near Riegrovy Sady Park and Jiřího z Poděbrad Square.

The area of the apartment on the first floor consists of a living room with a preparation for an open plan kitchen and access to a balcony, a bedroom with a bathroom, a separate toilet, and a foyer.

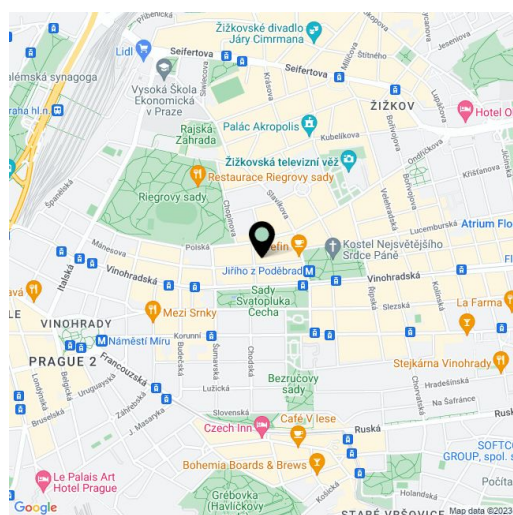
High-standard facilities include Foglie D'oro parquet floors, DelConca imitation marble tiles, Grohe (Essence New), Laufen, Kaldewei, and Riho sanitary ware, Art Nouveau paneled doors, period-style fire safety entrance doors, and double-glazed wooden windows. Central heating. Cellar storage unit at an extra cost.

Mánesova Street, surrounded by important buildings by famous architects as well as restaurants, bistros, and cafes, including the popular Kaaba Café, connects Jiřího z Poděbrad Square to the Main Railway Station. The ride to the city center is quick thanks to the proximity of a metro station and tram stop less than a 5-minute walk away. On nearby Jiřího z Poděbrad Square with the iconic Church of the Sacred Heart of the Lord by Josip Plečnik there are nice bars, cafes, shops, and regular farmers' markets. You can go for pleasant walks in nearby Riegrovy Sady Park with a garden restaurant and a Sokol gym with a swimming pool.

Apartment floor area 66.1 m², balcony 2 m², cellar 1.70 m².

Photos with furniture are from the show flat.

In addition to regular property viewings, we also offer real-time video viewings via WhatsApp, FaceTime, Messenger, Skype, and other apps.



* Area of the unit according to the Civil Code. The area consists of the sum total area of the entire unit bounded by perimeter walls.



Apartment One-bedroom (2+kk)

66.1 m², Prague 2, Vinohrady, Mánesova

Sold



Užitná plocha bytu	60,80m ²
Plocha příček	5,50m ²
Celková plocha bytu	66,10m ²
Balkon	2,00m ²
Plocha celkem	68,10m ²



202.MNS
REKONSTRUKCE BYTOVÉHO DOMU

STUDIE 2 x A4 11/2020
ČÁST: MĚŘITVO
STAVEBNÍ
VÝKRES: ČÍSL. VÝKRESU
BYT 201