



Apartment One-bedroom (2+kk)

Sold

73 m², Prague 2, Vinohrady, Mánesova





Apartment One-bedroom (2+kk)

Sold73 m², Prague 2, Vinohrady, Mánesova

Total area	73 m ²
Parking	-
Cellar	-
PENB	G
Reference number	38152

We have the exclusive right to sell this apartment, finished to a high standard, which is located in the recently completed **Mánesova78 Residence**. It boasts an attractive address in the city center near **Riegrovy Sady Park** and **Jiřího z Poděbrad Square**.

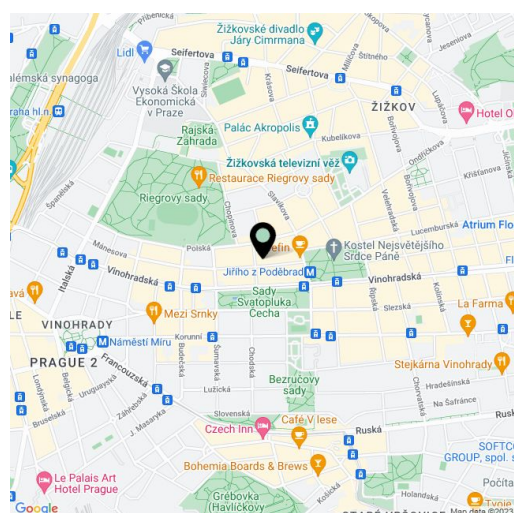
The area of the apartment on the 4th floor consists of a living room with a preparation for an open plan kitchen, a bedroom with a bathroom, a separate toilet, and a foyer.

High-standard facilities include **Foglie D'oro parquet floors**, DelConca imitation **marble** tiles, Grohe (Essence New), Laufen, Kaldewei, and Riho sanitary ware, Art Nouveau paneled doors, period-style fire safety entrance doors, and double-glazed wooden windows. Central heating. **Cellar storage unit at an extra cost**.

Mánesova Street, surrounded by important buildings by famous architects as well as restaurants, bistros, and cafes, including the popular **Kaaba Café**, connects Jiřího z Poděbrad Square to the Main Railway Station. The ride to the city center is quick thanks to the proximity of a metro station and tram stop less than a 5-minute walk away. On nearby Jiřího z Poděbrad Square with the iconic **Church of the Sacred Heart of the Lord** by Josip Plečnik there are nice bars, cafes, shops, and regular **farmers' markets**. You can go for pleasant walks in nearby **Riegrovy Sady Park** with a garden restaurant and a Sokol gym with a swimming pool.

Apartment floor area 73 m², cellar 2.1 m².

In addition to regular property viewings, we also offer real-time video viewings via WhatsApp, FaceTime, Messenger, Skype, and other apps.



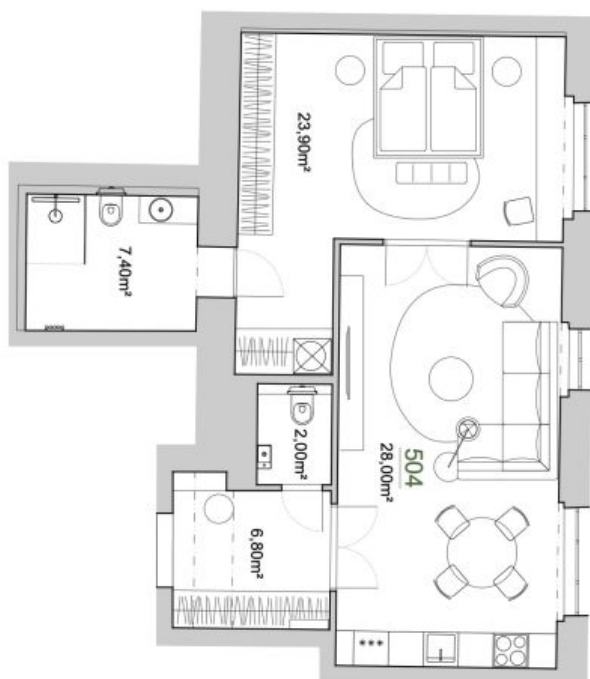
* Area of the unit according to the Civil Code. The area consists of the sum total area of the entire unit bounded by perimeter walls.



Apartment One-bedroom (2+kk)

73 m², Prague 2, Vinohrady, Mánesova

Sold



Užitná plocha bytu	68,10m ²
Plocha přiček	4,90m ²
Celková plocha bytu	73,00m ²
Balkon	--
Plocha celkem	73,00m ²



202.MNS
REKONSTRUKCE BYTOVÉHO DOMU

DOCUMENTACE FORMÁTI:	DATA
STUDIE 2 X A4	11/2020
ČÁST:	MĚŘENO
STAVEBNÍ	ČÍSLO VÝKRESU
VÝKRES	BYT 504