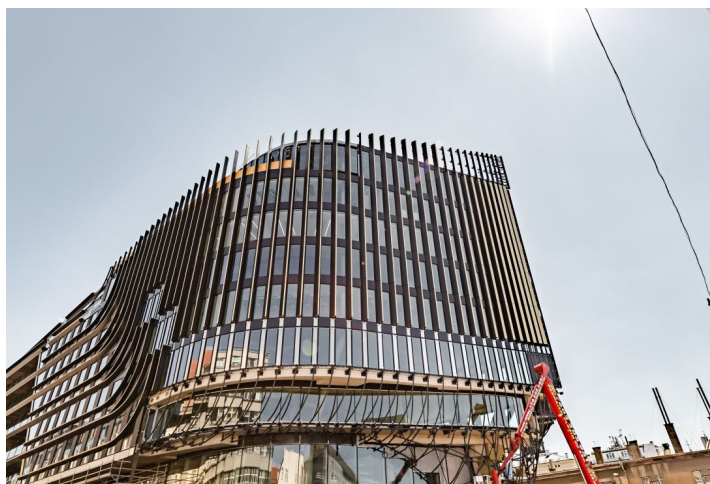




Retail space

Prague 1, Nové Město, Havlíčkova

Rented



**Retail space****Rented**

Prague 1, Nové Město, Havlíčkova

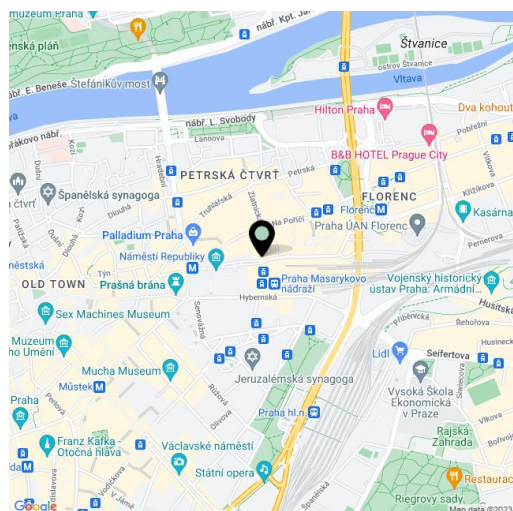
Service price	95 CZK monthly per m ²
Available area	140 m ²
Parking	EUR 200 / pp / month
PENB	G
Reference number	38206

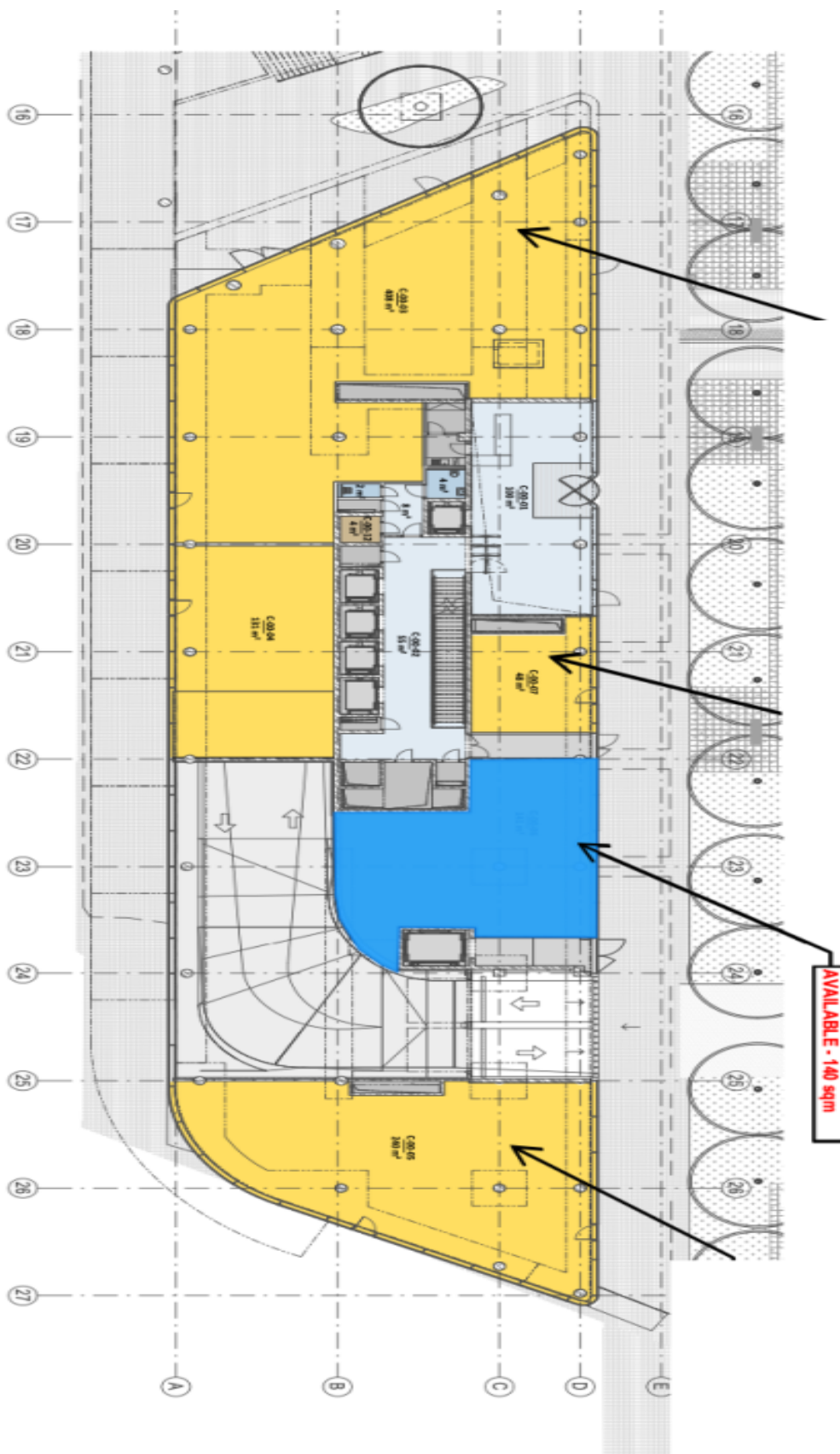
Retail space for lease on the ground floor of a project designed by Zaha Hadid Architects. The studio's intention was to respect the history of the area and thus to create a unique architectural work that will become part of the modern appearance of the city of Prague. The project meets the strictest criteria of LEED certification.

Location:

The project is located directly at the Masaryk Railway Station, the Náměstí Republiky tram stop, and the Náměstí Republiky metro station (line B).

Rental and service charges listed without VAT. Lessee pays no commission.







Retail space

Prague 1, Nové Město, Havlíčkova

Rented

