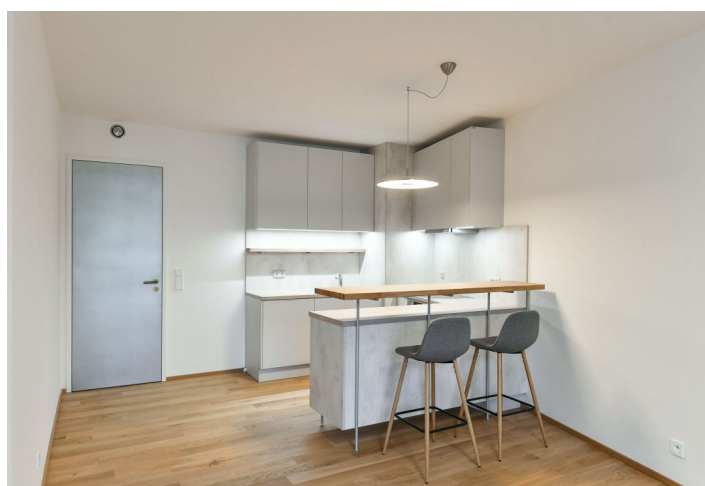
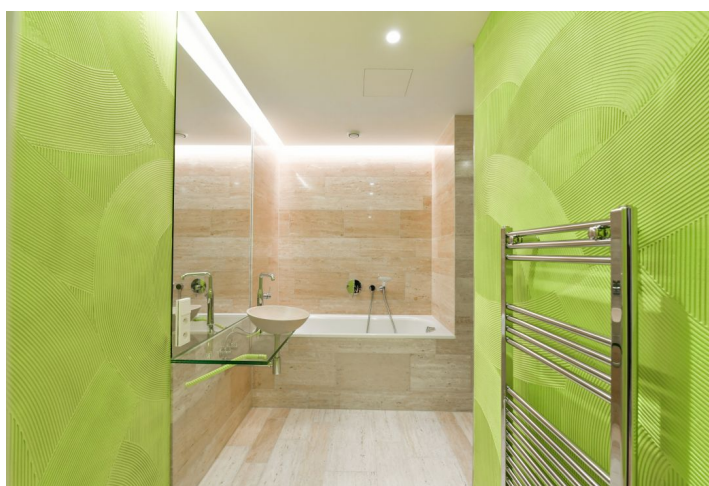
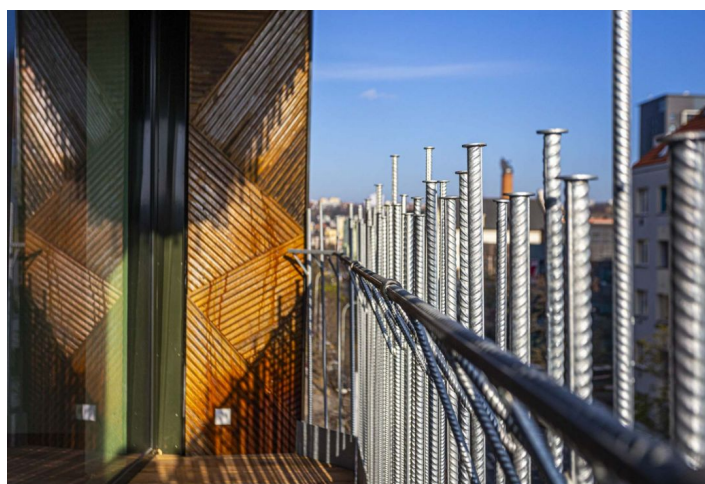




Apartment One-bedroom (2+kk)

Rented

59 m², Prague 7, Holešovice, Komunardů





Apartment One-bedroom (2+kk)

Rented

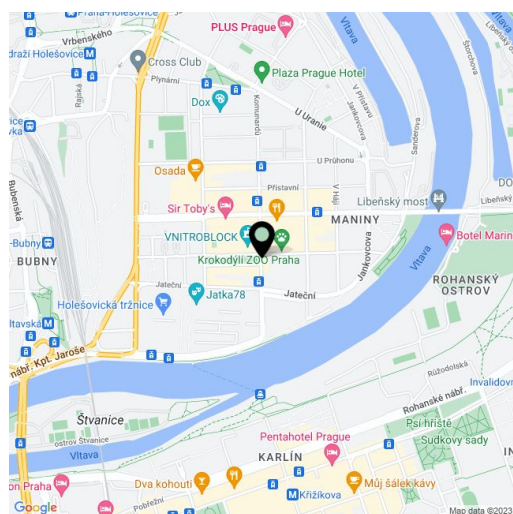
59 m², Prague 7, Holešovice, Komunardů

Total area	64 m ²
Floor area*	59 m ²
Balcony	5 m ²
Parking	Garage parking.
Garage	Yes
Cellar	-
Service price	Monthly deposit for service charges, heating, and water approx. CZK 7,500. Electricity is billed separately.
PENB	C
Reference number	38223
Available from	Immediately

This designer, unfurnished 1-bedroom apartment with a balcony is on the 4th floor of a brand new iconic building by the renowned architect Stanislav Fiala, author of the DRN building. In a dynamic district with trendy cafes, restaurants, bistros, and excellent transport accessibility, previously industrial Holešovice has now grown into a modern district with a slightly bohemian atmosphere. The advantages of living here include convenient access to the city center by tram and metro (Vltavská and Nádraží Holešovice stations), complete amenities, music clubs, DOX art gallery, La Fabrika and Játka 78 theaters, a multicultural center, and more. A golf driving range is nearby, as well as a popular bike path along the Vltava River.

The interior features a living room with a fully fitted open plan kitchen, a bedroom, a bathroom including both a bathtub and a walk-in shower, a separate toilet with a bidet, and an entrance hall with built-in wardrobes. Both the living room and the bedroom have access to the balcony.

High standard materials, oak parquet floors, stone tiles in the bathroom with underfloor heating, screed ceilings, aluminum double-glazed large-format windows, automatic blinds, security entry door, interior doors with concealed hinges, central heating, washing machine, dryer, refrigerator, microwave oven, telephone/Internet/TV sockets in the living room and the bedroom, electronic entry system, bike/pram storage, elevator. A garage parking space is included.



* Area of the unit according to the Civil Code. The area consists of the sum total area of the entire unit bounded by perimeter walls.



Apartment One-bedroom (2+kk)

59 m², Prague 7, Holešovice, Komunardů

Rented

