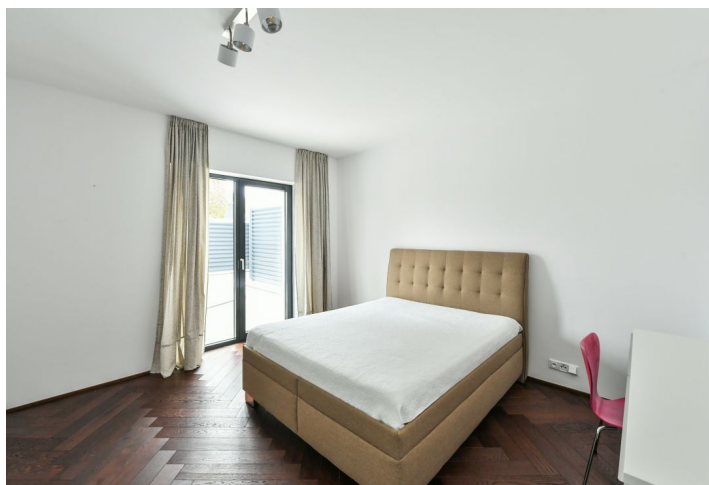
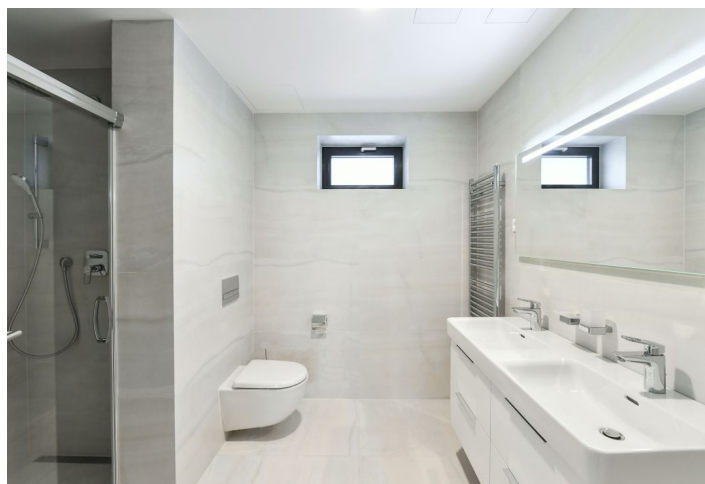
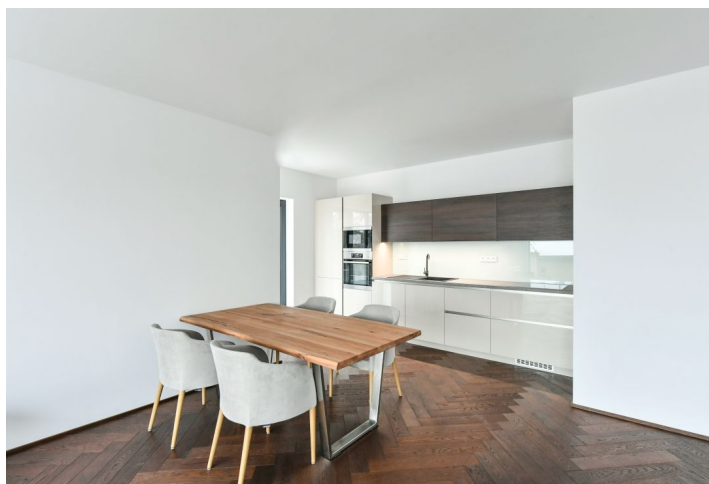




Apartment One-bedroom (2+kk)

Rented

79 m², Praha 5, Smíchov, K Závěrcce





Apartment One-bedroom (2+kk)

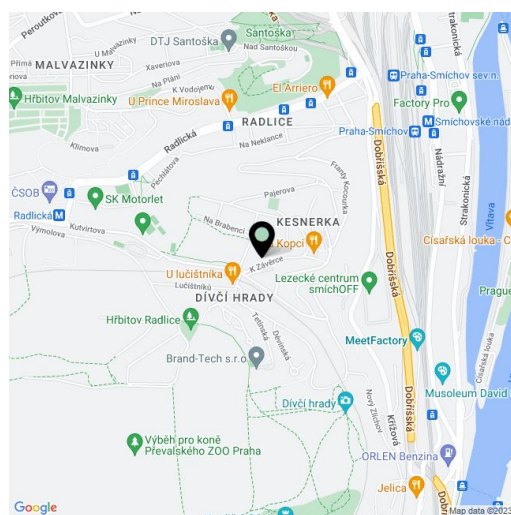
Rented79 m², Praha 5, Smíchov, K Závěrce

Total area	79 m ²
Parking	Garage parking.
Garage	Yes
Cellar	-
PENB	G
Reference number	38307
Available from	Immediately

This is a brand new furnished 1-bedroom apartment offering pretty green views, on the first floor in the newly built Viladům Děvín residential project in a quiet Prague 5 residential neighborhood under the Dívčí hrady hill. Located in close vicinity of the Kesnerka forest park and the Prokopské and Dalejské valleys, within easy reach of the Nový Smíchov / Anděl and Zličín commercial centers. There are regular bus connections to the Anděl and Radlická metro stations, a bus stop is just a few minutes from the building.

The apartment features a living room with a dining area and a fully fitted open plan kitchen, a bedroom with a built-in wardrobe, a shower room with a toilet, and an entrance hall with a built-in wardrobe.

Quality materials and equipment, solid oak floors, tiles, floor-to-ceiling windows, central underfloor heating, ceiling cooling, automatic exterior blinds, washer, dryer, dishwasher, induction cooktop, microwave oven, TV, smart home system, alarm, lift. Possible to rent 1 **garage parking** in the amount of CZK 2.000. Monthly deposit for service charges and utilities: CZK 5,500.



* Area of the unit according to the Civil Code. The area consists of the sum total area of the entire unit bounded by perimeter walls.