



**Office space**

Praha 1, Nové Město, náměstí Republiky

€ 30.00 / m² | CZK 761 / m²

Service price	130 CZK monthly per m ²
Available area	387 m ²
Cellar	-
Terrace	107 m ²
Parking	-
PENB	C
Reference number	38372

Office space for short-term rent in a prestigious office building on Náměstí Republiky Square. The building was built in 1905 by architects Adolf Foehrer and Alfons Wertmuller. The area benefits from its central location and it is the business and financial center of the city with direct connections to all important local and long-distance transport networks.

Possibility of storage space 21 sq. m for 10 EUR/sq. m/month.

Location:

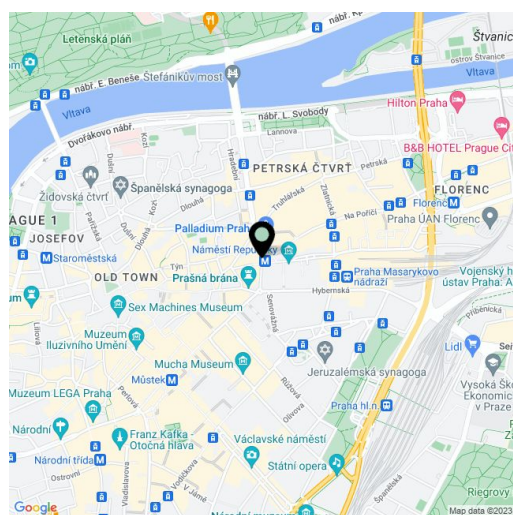
The building is located right next to a tram stop, close to the Namesti Republiky metro station (line B), the Masaryk train station, and the Na Florenci central bus station. It also has very good connections to the Václav Havel International Airport Prague and the D1 and D8 motorways. The Palladium shopping center and the Kotva department store are close-by.

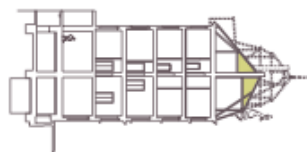
Facilities and services:

- 24/7 reception
- 2 passenger lifts
- Available storage space
- Raised floors with floor boxes
- Openable windows
- Modern LED backlight
- Terrace
- Parking in the adjacent shopping centers

Available from Q4 2024.

Rental and service charges listed without VAT. Lessee pays no commission.

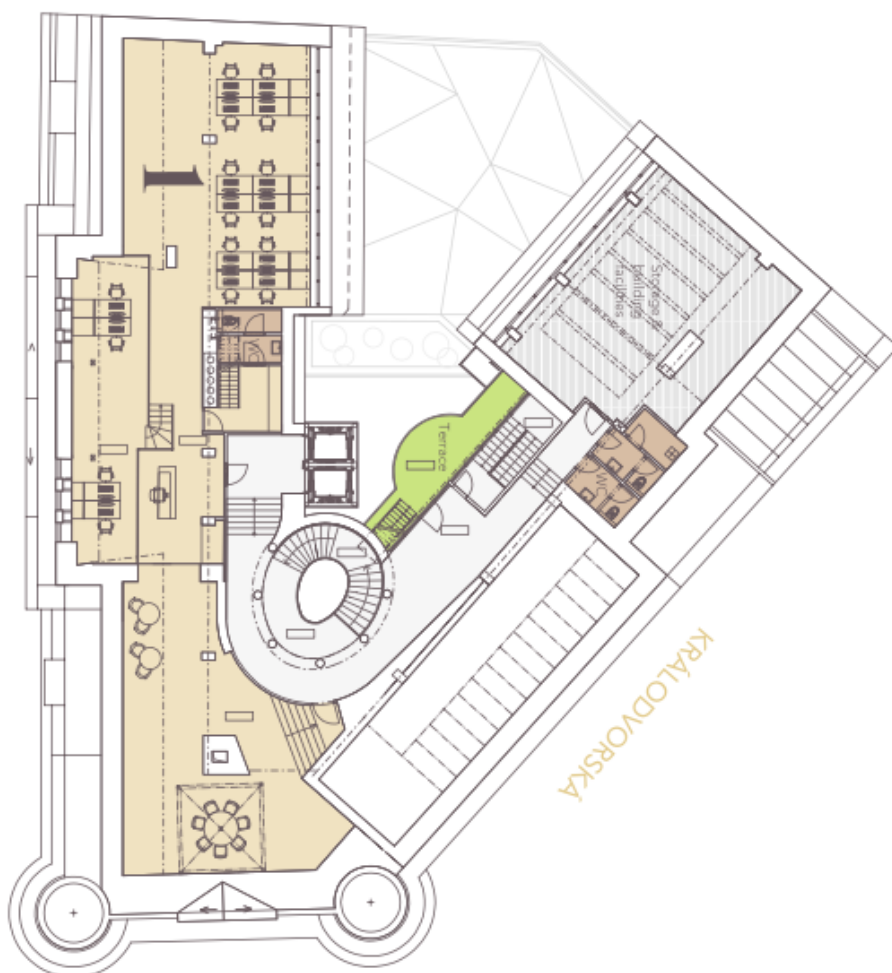


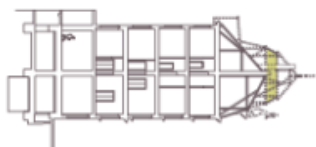


OFFICE 1

275 sqm

Sixth floor





OFFICE 1
TERRACE

74 sqm
51 sqm

Seventh floor

