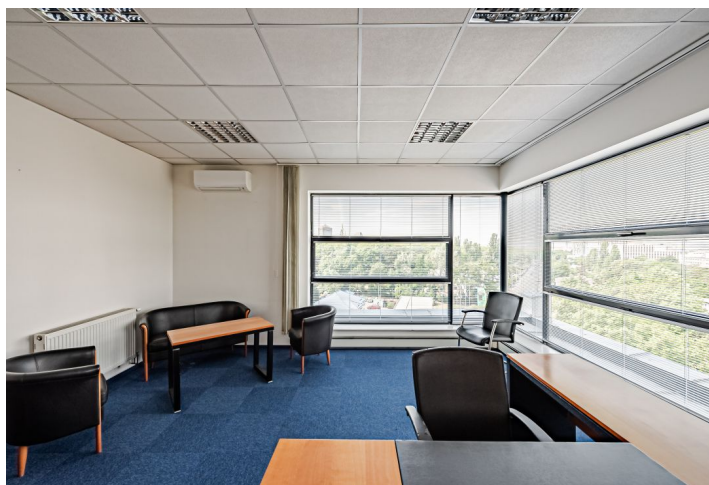




## Office space

€ 10.68 - 11.47 / m<sup>2</sup> | CZK 270 - 290 / m<sup>2</sup>

Praha 3, Strašnice, U nákladového nádraží



**Office space****€ 10.68 - 11.47 / m<sup>2</sup> | CZK 270 - 290 / m<sup>2</sup>**

Praha 3, Strašnice, U nákladového nádraží

<b>Service price</b>	100 CZK monthly per m <sup>2</sup>
<b>Available area</b>	1 807 m <sup>2</sup>
<b>Cellar</b>	-
<b>Parking</b>	EUR 75 / ps / month
<b>PENB</b>	D
<b>Reference number</b>	3838

Office space for lease on the 4th floor in a business park, which was completed in 2003 and consists of four office buildings in Prague 3 - Strašnice. The complex offers storage spaces, 2 restaurants and a free fitness center for tenants.

**Location:**

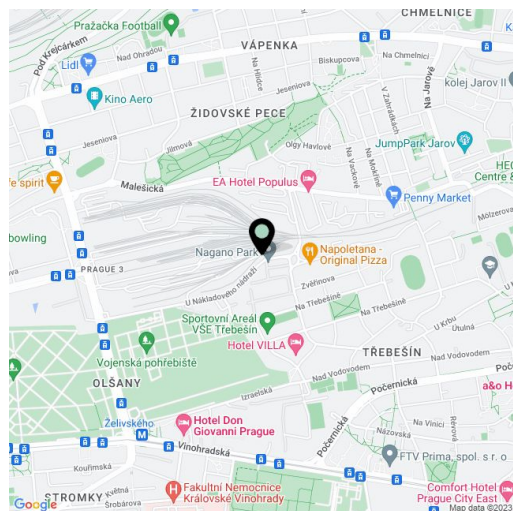
The building is easily accessible by car and public transport - bus and tram stops nearby, Želivského metro station (line A) is about 15 minutes walk away. Own shuttle bus in the morning and afternoon.

**Features and Services:**

- Central reception
- Security service 24/7
- Data center
- Intelligent Building Management System
- Facility management
- Meeting room
- High speed elevators
- Air conditioning
- Suspended ceilings
- Storage space
- Bistro, restaurant and fitness center
- Secure car parking

Images might not accurately reflect the current state of the premises.

Rental and service charges listed without VAT. Lessee pays no commission.





## Office space

€ 10.68 - 11.47 / m<sup>2</sup> | CZK 270 - 290 / m<sup>2</sup>

Praha 3, Strašnice, U nákladového nádraží

