



Office space

Prague 4, Nusle, Na Strži

Rented



**Office space****Rented**

Prague 4, Nusle, Na Strži

Service price	172 CZK monthly per m ²
Available area	596 m ²
Cellar	-
Terrace	26 m ²
Parking	EUR 130 / ps / month
PENB	A
Reference number	38433

Office space for lease on the 4th floor of a modern multifunctional AA class complex resembling a luxury yacht / cruise ship. The common areas in the structure's interior also resemble a ship.

Location:

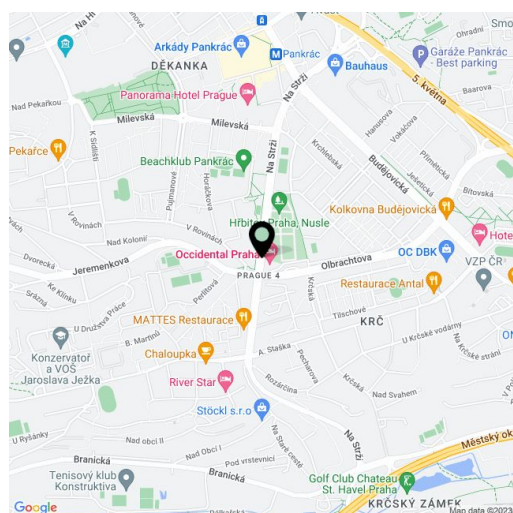
The building is situated in an attractive business location of Prague 4 with excellent accessibility by car and public transport – in close vicinity of the Pankrác metro station (line C) and bus stops. Easy connection to the Prague Ring Road and the D1 highway. Good accessibility to the city center (approx. 7 minutes) and to the international Vaclav Havel Airport Prague (approx. 25 minutes). Excellent civic amenities in the vicinity – many restaurants, bars, financial institutions, and the Arkády Pankrác shopping center.

Features and services:

- entrance hall with a central reception
- 24/7 security service
- access by magnetic card, wheelchair access
- 6 elevators
- flexible office layout
- air-conditioning
- openable windows
- suspended ceilings
- raised floors
- sprinklers
- underground parking
- showers
- floor boxes

Available from February, 2024.

Rental and service charges listed without VAT. Lessee pays no commission.

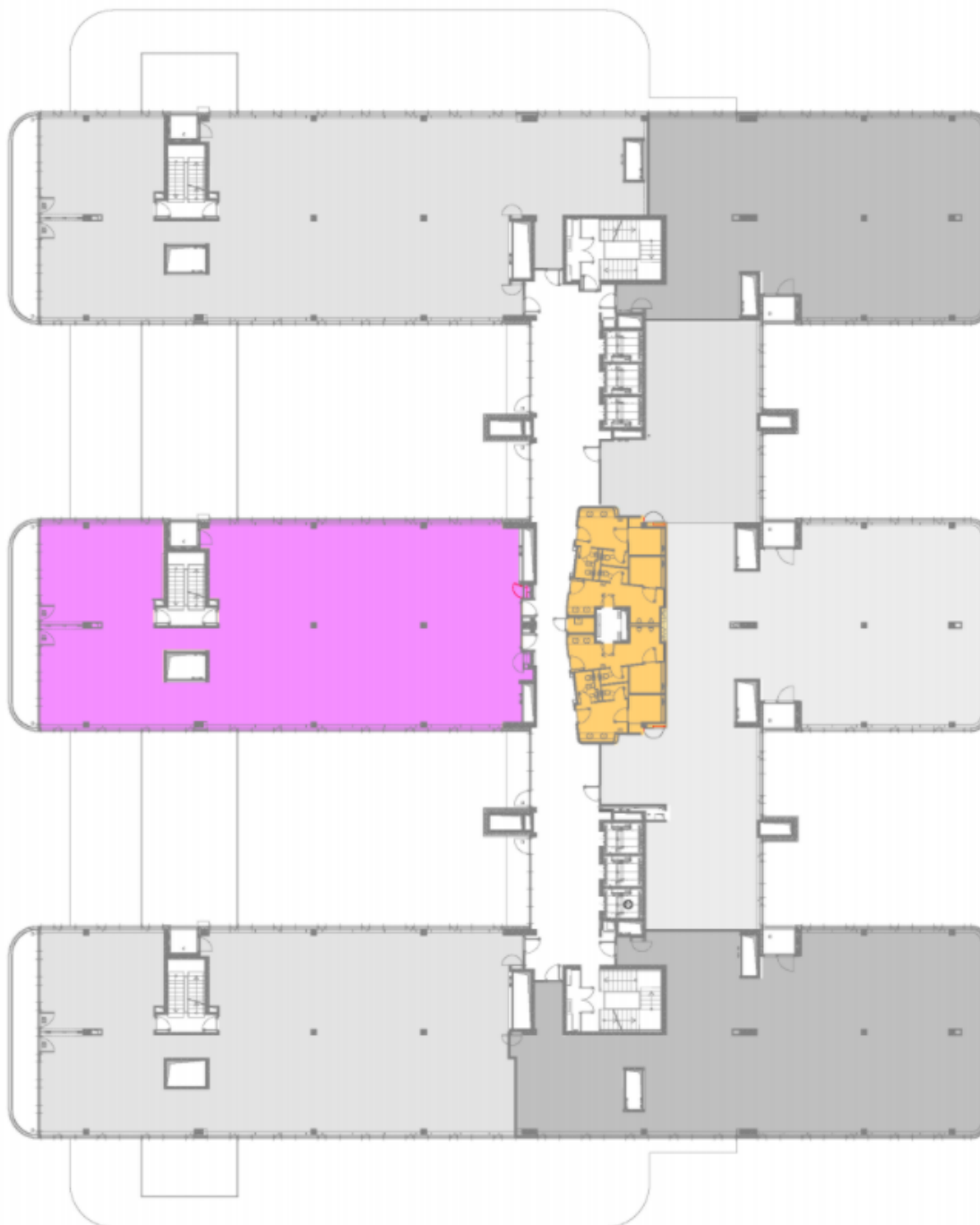




Office space

Prague 4, Nusle, Na Strži

Rented





Office space

Prague 4, Nusle, Na Strži

Rented

