



Apartment Studio (1+kk)

36.5 m², Prague 4, Vyšehrad

Sold





Apartment Studio (1+kk)

Sold36.5 m², Prague 4, Vyšehrad

| | |
|------------------|-------------------|
| Total area | 37 m ² |
| Parking | - |
| Cellar | - |
| PENB | G |
| Reference number | 38463 |

* Area of the unit according to the Civil Code. The area consists of the sum total area of the entire unit bounded by perimeter walls.

This southwest-facing 1st floor studio apartment overlooking the greenery is part of a newly completed residence, which is the end result of a carefully reconstructed historic building in an attractive location near Vyšehrad, on the same sloping street as large Lumírový Sady Park and within walking distance of a metro station and tram stop. Expected completion date by the end of August 2021.

The layout offers an airy open space living area with a preparation for a kitchen, a bathroom (with a shower), a WC, and a hallway.

Facilities will include **wooden floors** (oiled oak) and designer sanitary ware; windows will be wooden casement. The entrances to the residence's apartments will be from elegant common areas.

The location is home to many green spaces. **Lumírový Sady Park**, which is connected to Vyšehradské Sady Park, is right next to the building. Also close are the **Na Bělce or Folimanka parks**. Cafes, restaurants, shops, and offices are all easy to reach and the Congress Center, where you can rent a garage, is also in the area. The Vyšehrad metro station (line C) or the Ostrčilovo náměstí tram stop are a short walk away.

Floor area 36.5 m².

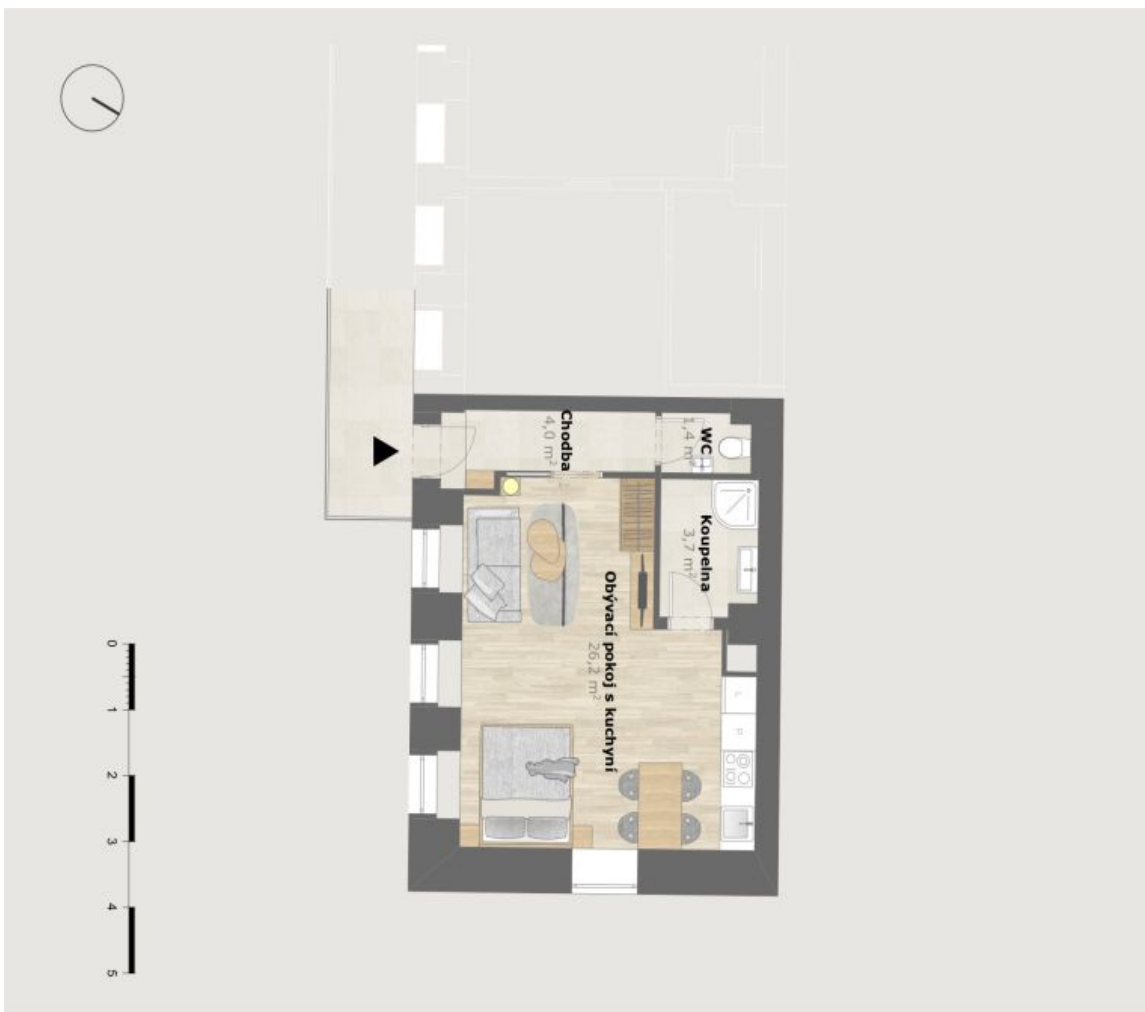
In addition to regular property viewings, we also offer real-time video viewings via WhatsApp, FaceTime, Messenger, Skype, and other apps.



Apartment Studio (1+kk)

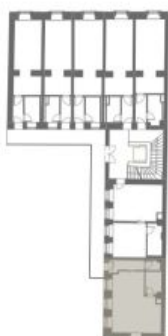
36.5 m², Prague 4, Vyšehrad

Sold



BYT č. 2.7 - 1+kk

Umístění bytu v objektu
2.NP



Podlahová plocha bytu 36,5 m²