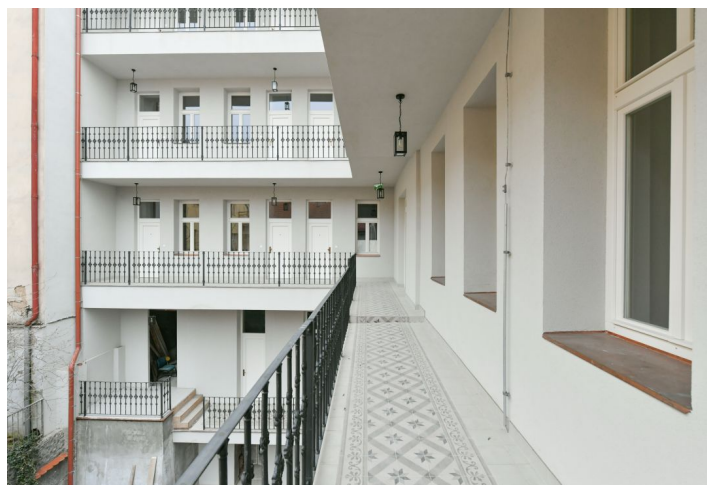
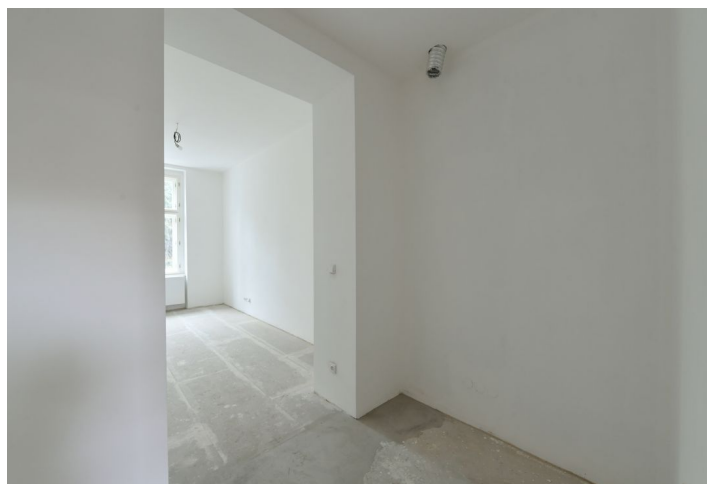




## Apartment Studio (1+kk)

29.7 m<sup>2</sup>, Prague 4, Vyšehrad, Lumírova

Sold





## Apartment Studio (1+kk)

29.7 m<sup>2</sup>, Prague 4, Vyšehrad, Lumírova

Sold

Total area	30 m <sup>2</sup>
Parking	-
Cellar	-
PENB	G
Reference number	38466

This southwest-facing 2nd floor studio apartment overlooking the greenery is part of a newly completed residence, which is the end result of a carefully reconstructed historic building in an attractive location near Vyšehrad, on the same sloping street as large Lumírovy Sady Park and within walking distance of a metro station and tram stop. Expected completion date by the end of August 2021.

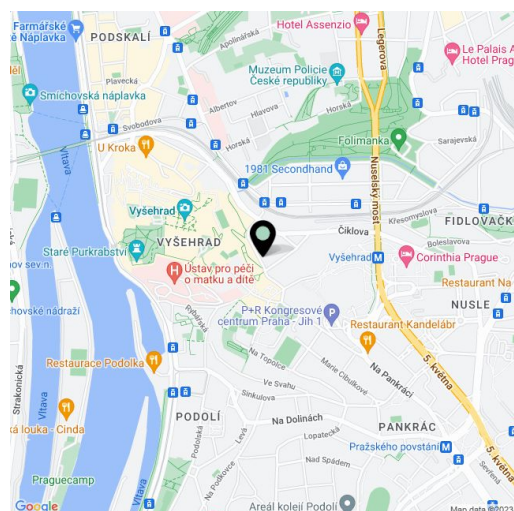
The layout offers a main living area with a partially separate kitchen (preparation for a kitchen unit), a bathroom (with a shower and a toilet), and a hallway.

Facilities will include **wooden floors** (oiled oak) and designer sanitary ware; windows will be wooden casement. The entrances to the residence's apartments will be from elegant common areas.

The location is home to many green spaces. **Lumírovy Sady Park**, which is connected to Vyšehradské Sady Park, is right next to the building. Also close are the **Na Bělce** or **Folimanka parks**. Cafes, restaurants, shops, and offices are all easy to reach and the Congress Center, where you can rent a garage, is also in the area. The Vyšehrad metro station (line C) or the Ostrčilovo náměstí tram stop are a short walk away.

Floor area 29.7 m<sup>2</sup>.

In addition to regular property viewings, we also offer real-time video viewings via WhatsApp, FaceTime, Messenger, Skype, and other apps.



\* Area of the unit according to the Civil Code. The area consists of the sum total area of the entire unit bounded by perimeter walls.



## Apartment Studio (1+kk)

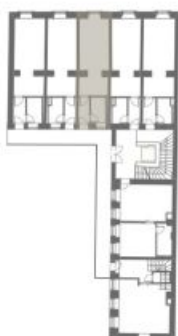
29.7 m<sup>2</sup>, Prague 4, Vyšehrad, Lumírova

Sold



### BYT Č. 3.3 - 1+kk

Umístění bytu v objektu  
3.NP



Podlahová plocha bytu 29,7 m<sup>2</sup>