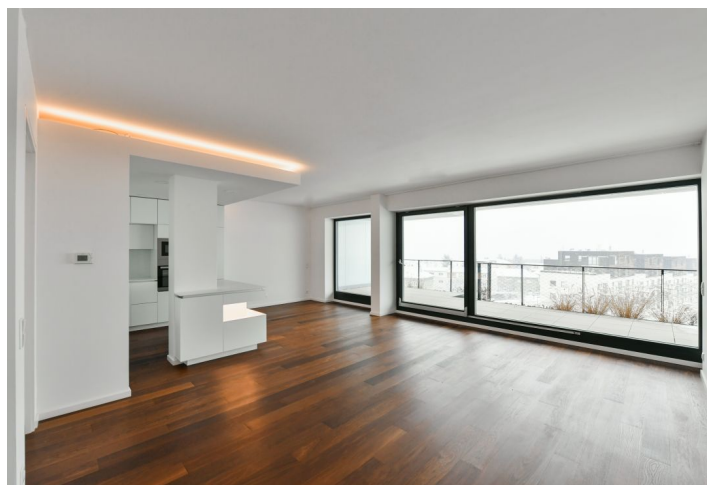
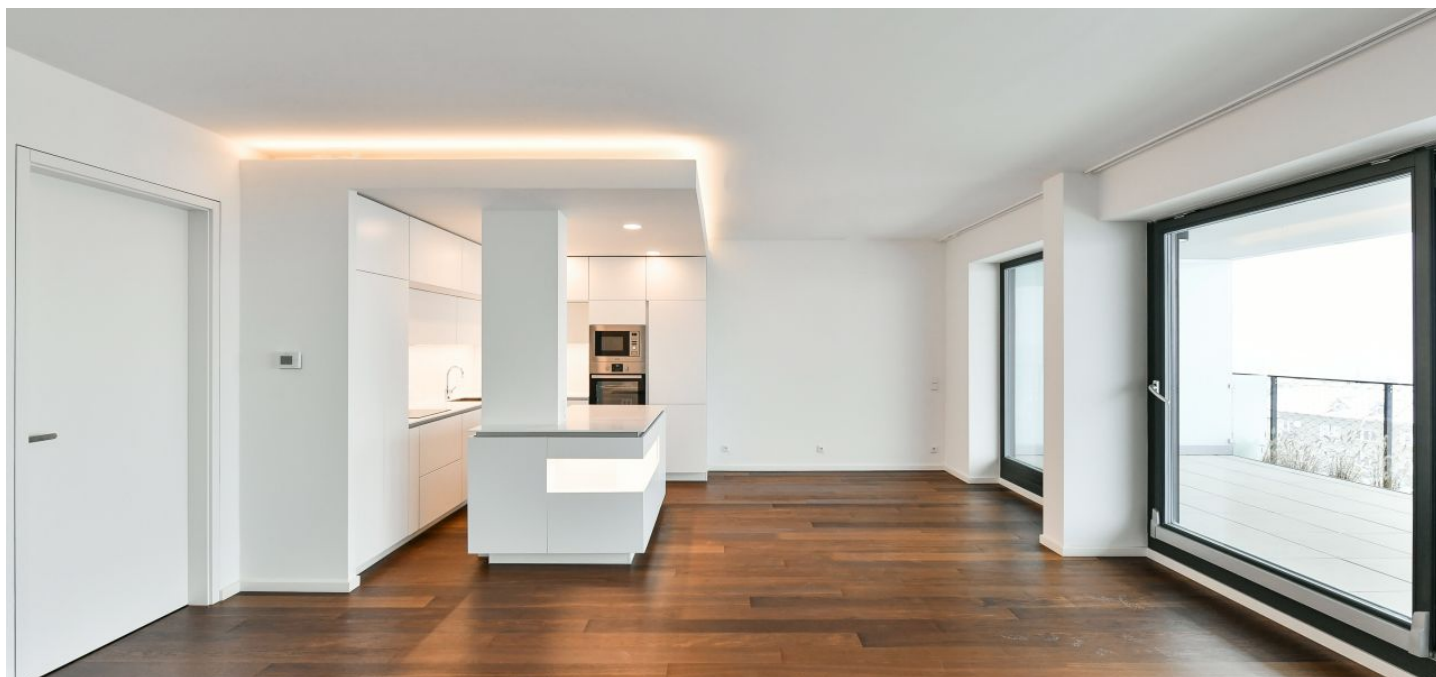




Apartment Three-bedroom (4+kk)

Rented

118 m², Praha 5, Košíře, Na Pomezí





Apartment Three-bedroom (4+kk)

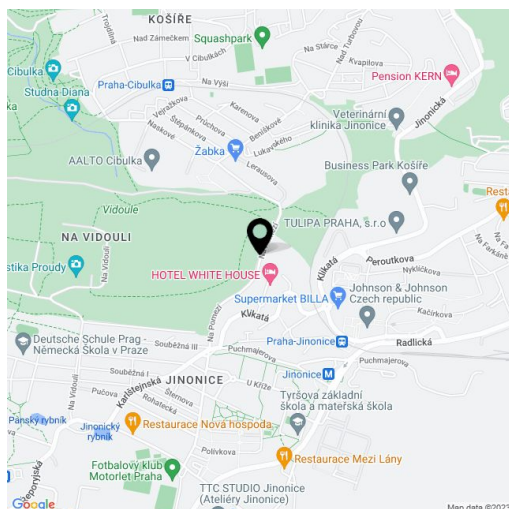
Rented118 m², Praha 5, Košíře, Na Pomezí

Total area	143 m ²
Floor area*	118 m ²
Terrace	25 m ²
Parking	Double garage.
Garage	Yes
Cellar	Yes
PENB	B
Reference number	38476
Available from	Immediately

Modern apartment in the brand new, highly praised SAKURA project. Boasting wonderful views of the city and surrounding greenery, this high standard 3-bedroom 2-bathroom apartment with 2 terraces is on the second floor of a residential project with security, a unique shared garden and lush greenery. Set in a quiet residential neighborhood on the edge of the Cibulka forest park, close to Vidoule natural preserve. Conveniently located for the Jinonice metro station, Nový Smíchov / Anděl commercial center and the German School, with full amenities in close vicinity.

The interior features a living room with a dining area, a fully fitted open plan kitchen and access to a 20 m² terrace, 3 bedrooms with access to a 5 m² terrace, an en-suite bathroom (walk-in shower, toilet), a family bathroom (bathtub, walk-in shower), a separate toilet, a utility room, and an entrance hall.

Hardwood floors, tiles, underfloor heating throughout, built-in wardrobes and storage in all bedrooms and the hall, floor-to-ceiling French windows, central heating, washing machine, dishwasher, induction cooktop, microwave oven, cellar, lift. A secure underground double garage is included. Monthly deposit for service charges, heating and water: CZK 6000. Electricity is billed separately (transfer to the tenant).



* Area of the unit according to the Civil Code. The area consists of the sum total area of the entire unit bounded by perimeter walls.

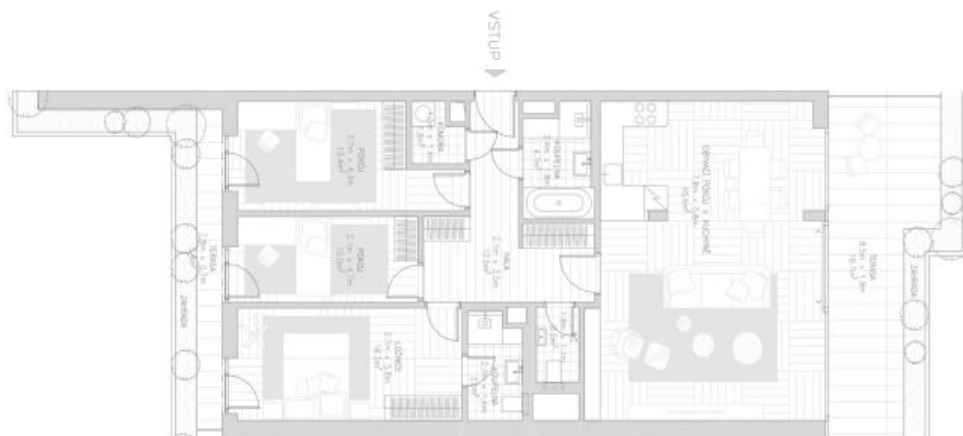


Apartment Three-bedroom (4+kk)

Rented

118 m², Praha 5, Košíře, Na Pomezí

PREMIUM
DEVELOPMENT



LEGENDA MÍSTNOSTÍ

OBYVACÍ POKOJ + KUCHYŇE	45,6 m ²
KOUPELNA	4,7 m ²
KOUPELNA	3,5 m ²
HALA	12,5 m ²
KOMODRA	1,8 m ²
WC	2,0 m ²
POKOJ	13,4 m ²
POKOJ	10,0 m ²
LODŽNICE	16,2 m ²
ČISTÁ PODLAHOVÁ PLOCHA	109,7 m²

VENKOVNÍ PLOCHA

TERASA	19,7 m ²
TERASA	5,6 m ²

CELKOVÁ PLOCHA K ZASTAVĚNÍ

179,0 m²

PŮDORYS / ŘEZ



Datum:	02/2017
Měřítko:	1:100
Forma výřezu:	A3

1) Další soubor plánů pro informací a sádkový výkres jsou příloha. Přesná rozložení a velikosti se mohou lišit. Developer si vyhrazuje právo na změny a upřesnění bez předložení upozornění.