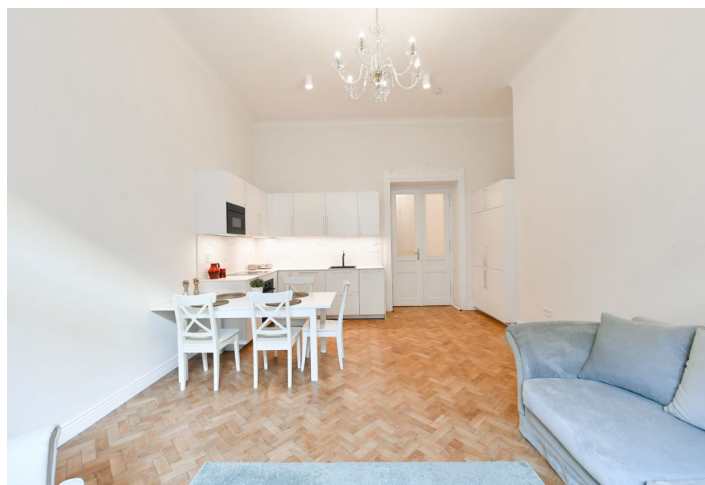
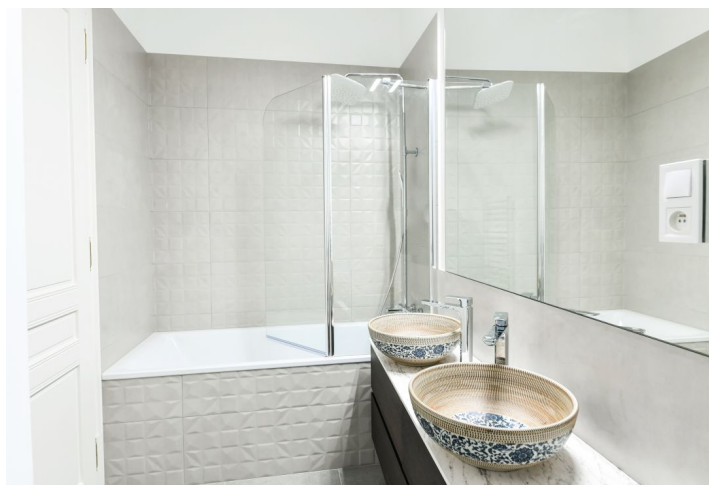




Apartment Two-bedroom (3+kk)

Rented

88 m², Prague 1, Staré Město, Národní





Apartment Two-bedroom (3+kk)

Rented

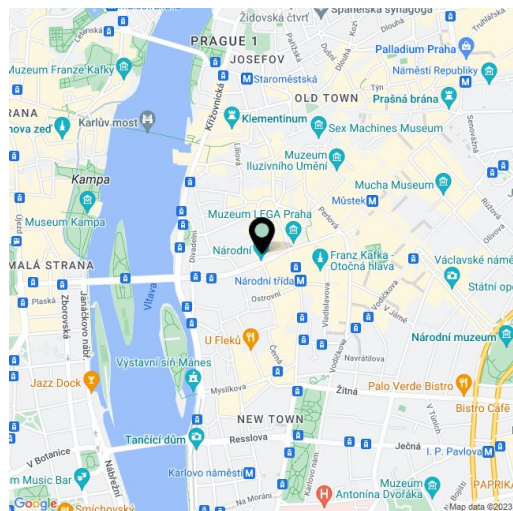
88 m², Prague 1, Staré Město, Národní

Total area	93 m ²
Floor area*	88 m ²
Balcony	5 m ²
Parking	-
Cellar	-
PENB	E
Reference number	38518
Available from	Immediately

Benefiting from a balcony and central location, this is a newly fully refurbished, semi furnished 1-2-bedroom apartment on the second floor of a traditional residential palace with preserved original details. Located directly on Národní třída Street, in close proximity of the National Theater and the Vltava embankment. Stylish living in the historic center of Prague just moments from Wenceslas and Old Town Squares, steps from shopping, dining and entertainment incl. the Quadrio shopping center, and major tram and metro links (Můstek, Národní třída, lines A and B). Quiet despite the central location with high pedestrian traffic.

With airy rooms, the interior features a living room with a fully fitted open plan kitchen and a large **balcony** facing the street, a master bedroom facing a quiet side street with the Church of St. Martin in the Wall, a guest bedroom / study with storage, a shower room, a separate toilet, and an entrance hall.

Preserved original details, high ceilings, **solid wood parquet floors**, large format tiles, security entry door, gas boiler, washing machine, dishwasher, microwave oven, storage room. Monthly deposit for service charges and utilities is billed separately. Available during January 2021.



* Area of the unit according to the Civil Code. The area consists of the sum total area of the entire unit bounded by perimeter walls.

**Apartment Two-bedroom (3+kk)****Rented**88 m², Prague 1, Staré Město, Národní