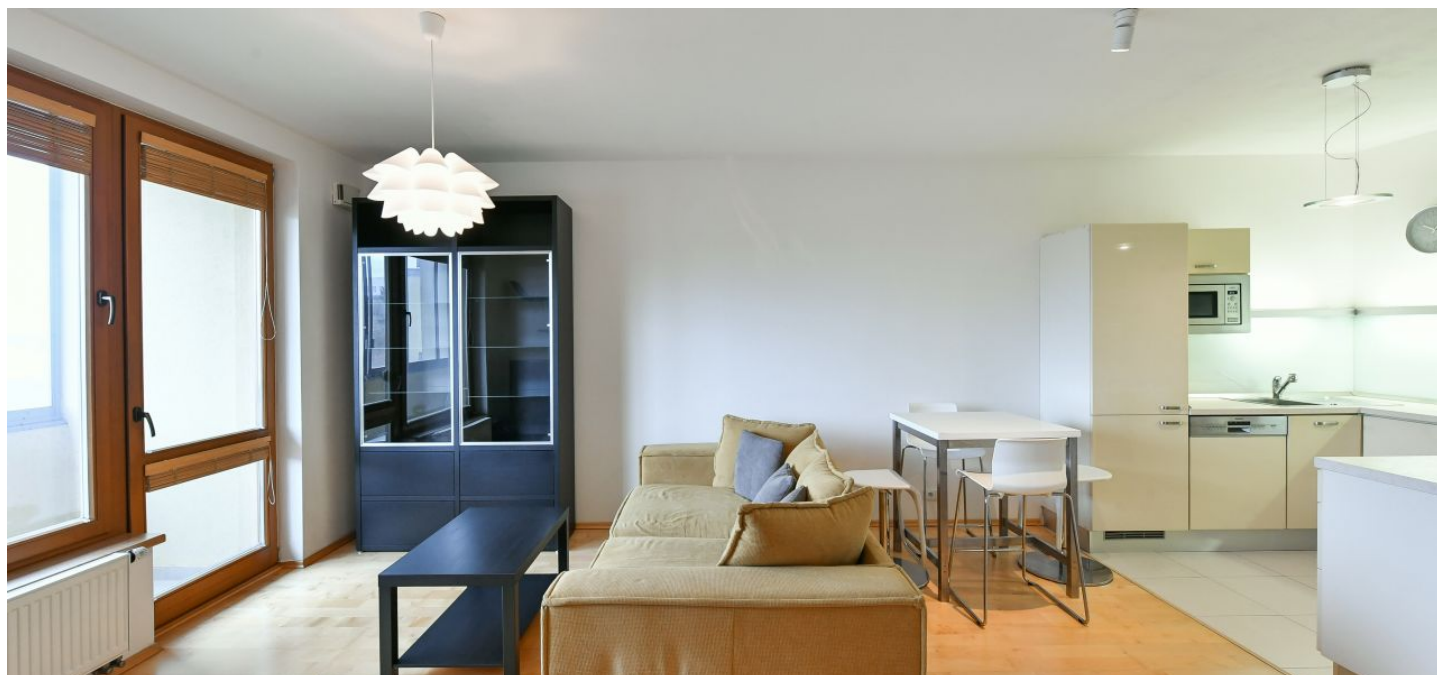




## Apartment One-bedroom (2+kk)

47 m², Prague 5, Zličín, Lipovská

Rented





# Apartment One-bedroom (2+kk)

Rented

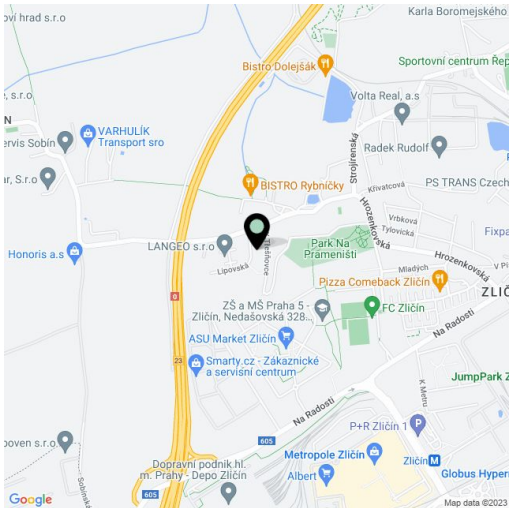
47 m², Prague 5, Zličín, Lipovská

|                  |                 |
|------------------|-----------------|
| Total area       | 55 m²           |
| Floor area*      | 47 m²           |
| Loggia           | 8 m²            |
| Parking          | Garage parking. |
| Garage           | Yes             |
| Cellar           | Yes             |
| PENB             | G               |
| Reference number | 38544           |
| Available from   | Immediately     |

Benefiting from an enclosed balcony and parking, this is a furnished 1-bedroom apartment on the second floor in a modern apartment building with a lift and a courtyard garden. Situated near the Na Prameništi Park, just a short walk from the Metropole Zličín shopping center and Zličín metro station, line B, with quick access to the city center. Located moments from the Prague Ring Road, and a short drive from the airport (8 min.) and the Japanese School.

The interior features a living room with a dining area, a fully fitted open plan kitchen and an **enclosed balcony** facing the courtyard garden, a bedroom, a bathroom with a walk-in shower and a toilet, a fitted **walk-in closet**, and an entrance hall with built-in wardrobes.

**Hardwood floors**, tiles, security entry door, blinds, central heating, air-conditioning unit, washing machine, dishwasher, induction cooktop, microwave oven, TV, satellite dish, **cellar**, camera system and pram storage in the building. A **garage parking** space is included. Monthly deposit for service charges, water and heating: CZK 3,100. Electricity is billed separately.



\* Area of the unit according to the Civil Code. The area consists of the sum total area of the entire unit bounded by perimeter walls.