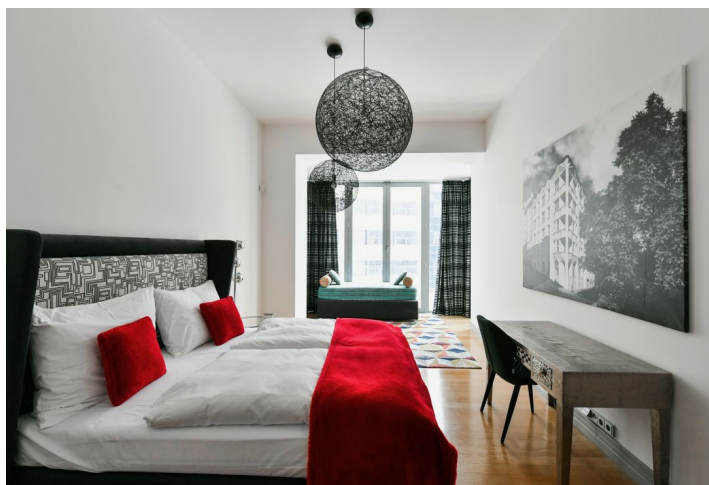




Apartment Two-bedroom (3+kk)

Rented

119 m², Prague 1, Staré Město, Rybná





Apartment Two-bedroom (3+kk)

Rented

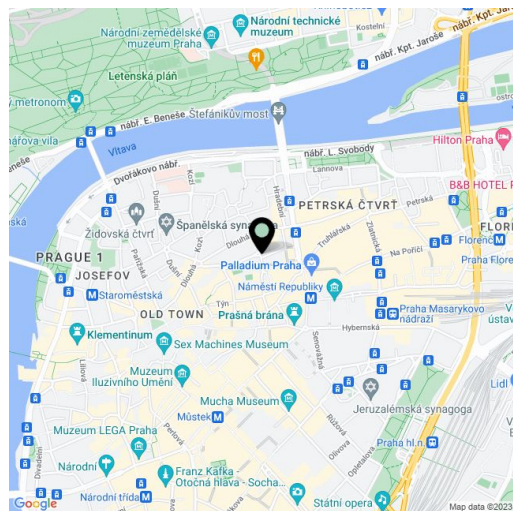
119 m², Prague 1, Staré Město, Rybná

Total area	131 m ²
Floor area*	119 m ²
Terrace	12 m ²
Parking	-
Cellar	-
PENB	G
Reference number	38588
Available from	Immediately

This high standard, completely refurbished and furnished 2-bedroom 2-bathroom flat with a terrace is situated on the second floor of a meticulously renovated traditional building with a lift. Conveniently located in the historic and cultural center of Prague, just a few minute walk from the Old Town Square, the prestigious Pařížská street, the Palladium and Kotva Shopping Centers, Náměstí Republiky metro station and tram stops. There is a multipurpose sports complex just steps from the building, and within walking distance is the Vltava embankment as well as the Letná Park.

The stylish interior features a comfortable living room with a fully fitted open plan kitchen, a dining area and a **terrace** offering **views of the Basilica of St. James**, two bedrooms with bay windows, built-in wardrobes and en-suite shower rooms, a separate toilet with a bidet shower, utility area, and an entrance hall with built-in wardrobes.

Air-conditioning, high ceilings, **hardwood floors**, tiles, security entry door, French windows, garden furniture, gas boiler, washer, dishwasher, induction cooktop, microwave oven, kitchenware, TV, video entry phone, master switch, camera system. Monthly deposit for service charges, water and internet: CZK 1000/person. Gas and electricity are billed separately.



* Area of the unit according to the Civil Code. The area consists of the sum total area of the entire unit bounded by perimeter walls.