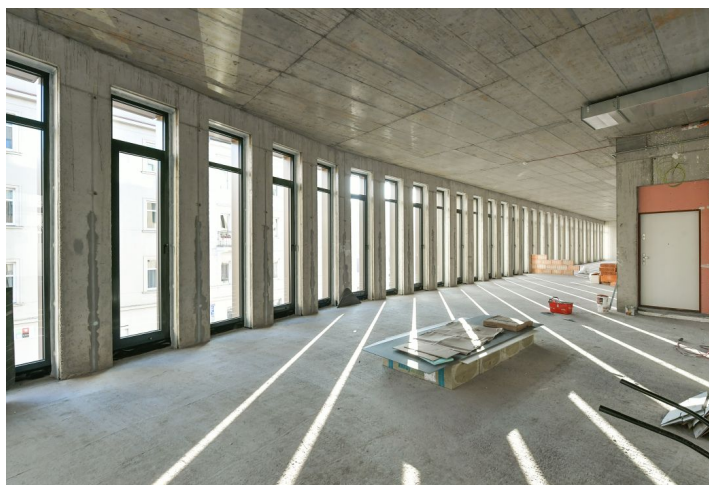
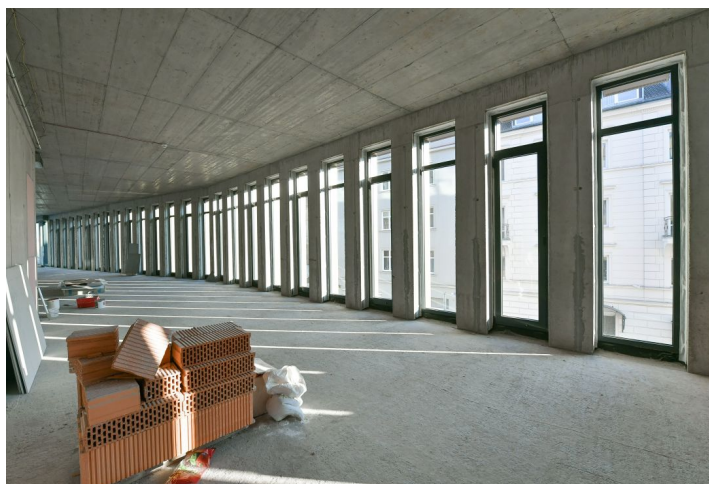




## Office building

Prague 5, Košíře, Plzeňská

Ask for price





## Office building

Prague 5, Košíře, Plzeňská

**Ask for price**

Total building area	2 154 m <sup>2</sup>
Tenant consumption	—
Parking	-
Parking service charges	—
Parking ratio	—
Certification	—
PENB	A
Reference number	38708

This new administrative complex, strategically located between Smíchov and Košíře, only 15 minutes away from Wenceslas Square, offers flexibly designed modules for lease with a total area of 3,500 sq. m. They are available as open space or separate offices and therefore ideal for small or medium-sized companies. The complex also has 32 parking spaces.

### Location:

Excellent accessibility by public transport. The project is located just a 5-minute walk from the Andel (line B) metro station and the U Zvonu tram stop. The Vaclav Havel Prague Airport is a 20-minute drive away. All civic amenities in the area.

### Features and services:

- Clear floor height from 3 m
- Individual energy measurement
- Wheelchair accessibility
- 24/7 access via magnetic cards
- 24/7 building security (CCTV, EPS)
- Building management directly in the building
- 32 parking spaces in the underground garage
- Rechargeable socket for electric cars in the garage
- Warehouse space
- Four-pipe induction beams with the possibility of self-regulation
- Openable windows
- Internal blinds
- Double floors
- Lowered ceilings with integrated lighting

Rental and service charges are listed without VAT. Lessee pays no commission.



## Office building

Prague 5, Košíře, Plzeňská

Ask for price



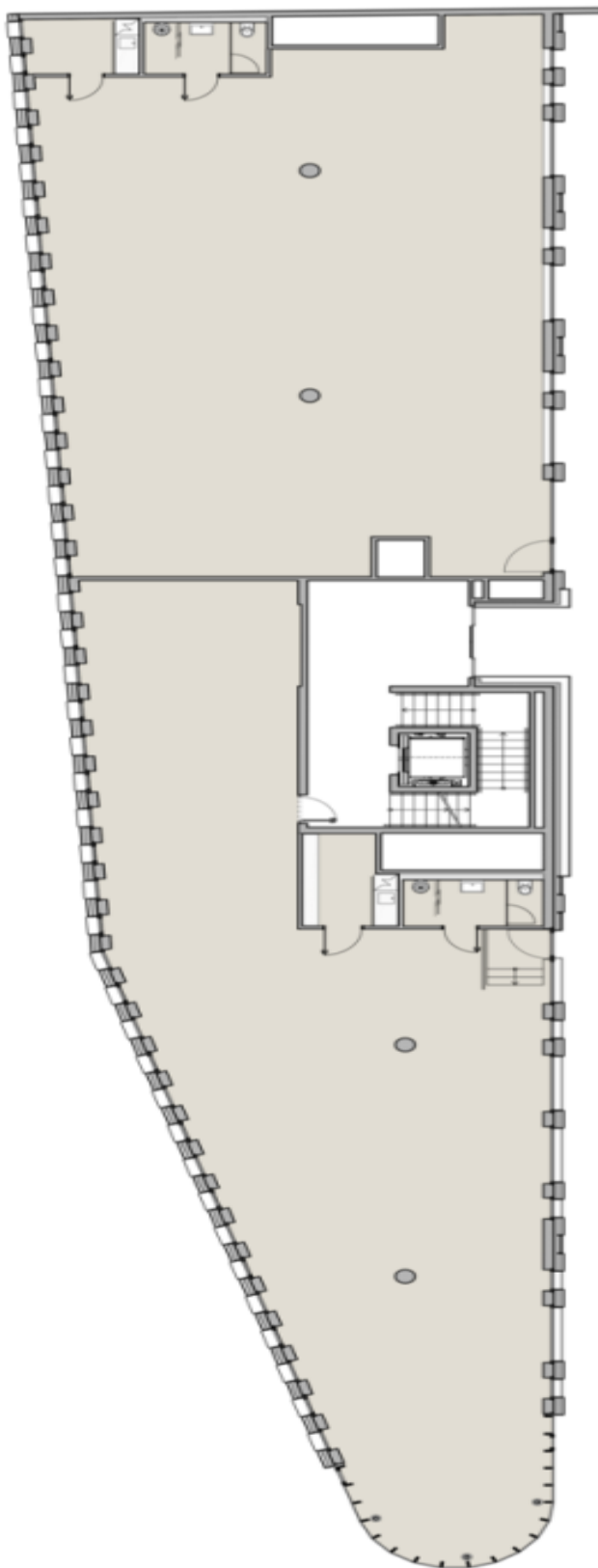
1pp



## Office building

Prague 5, Košíře, Plzeňská

Ask for price

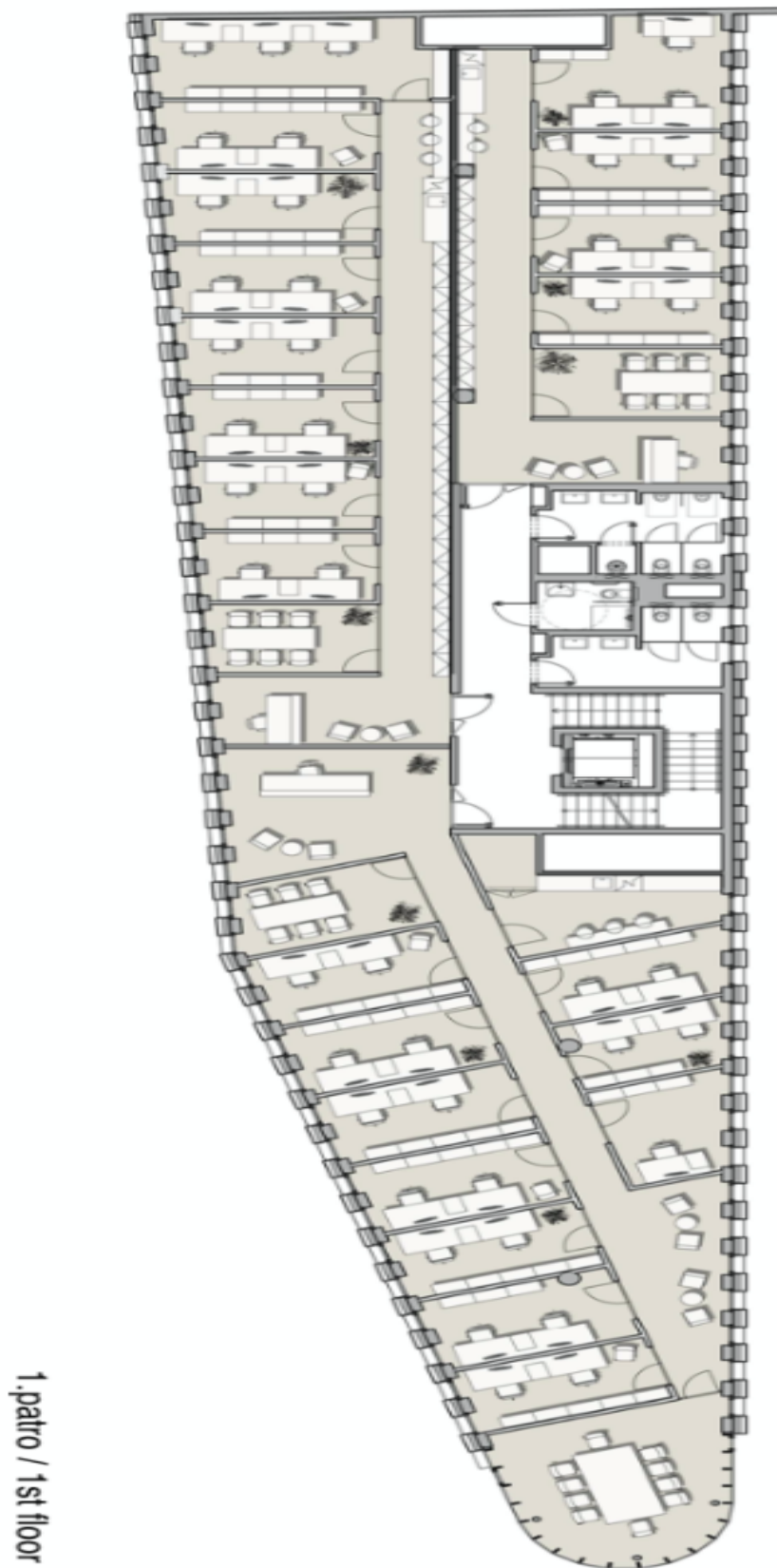




## Office building

Prague 5, Košíře, Plzeňská

Ask for price

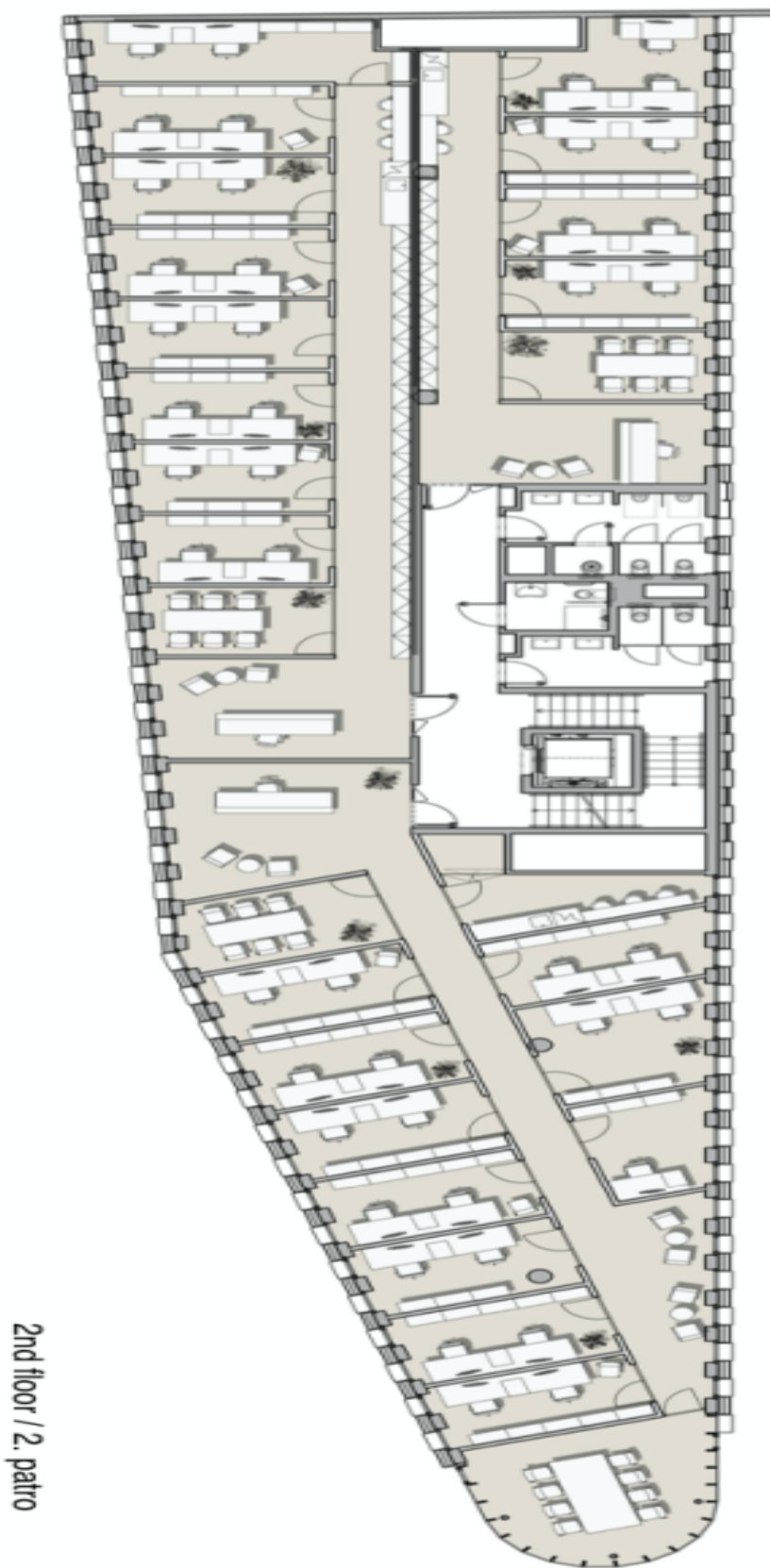




## Office building

Prague 5, Košíře, Plzeňská

Ask for price

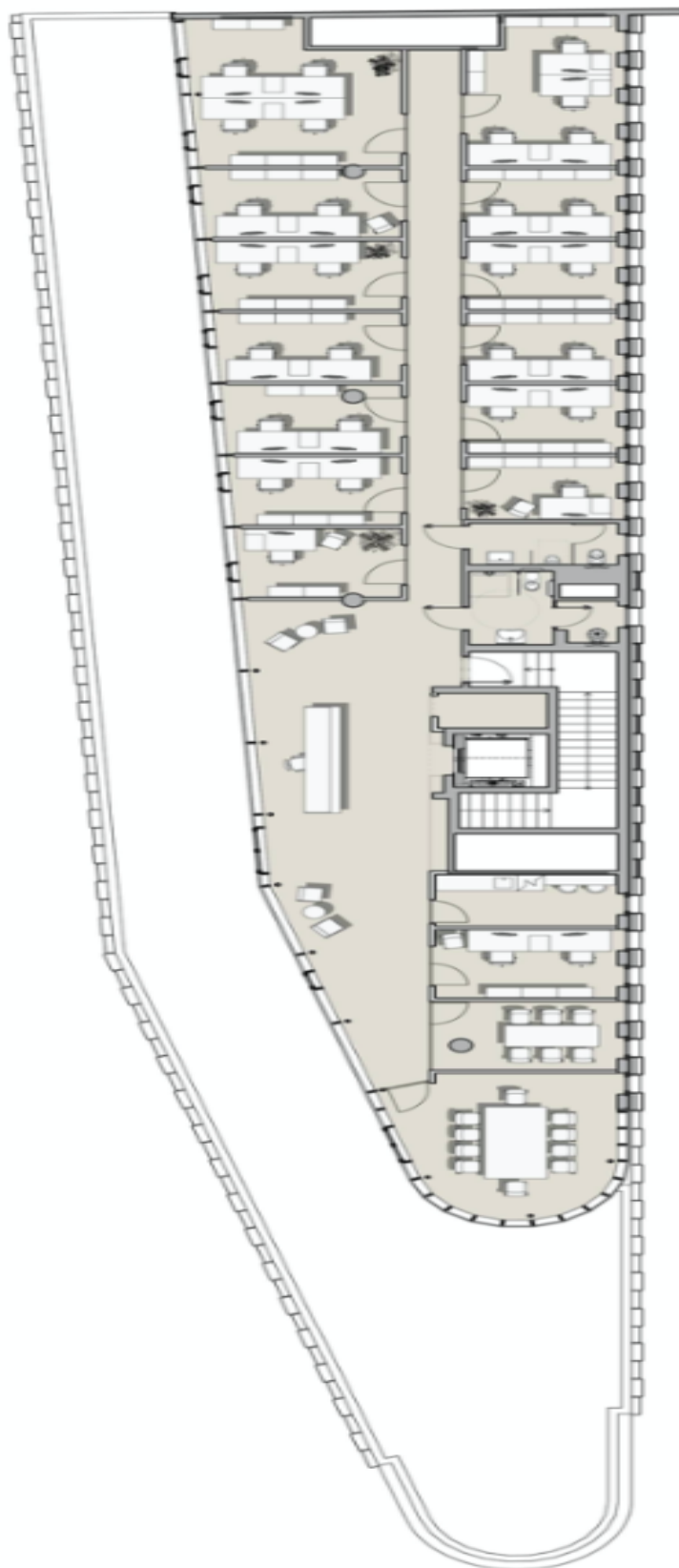




## Office building

Prague 5, Košíře, Plzeňská

Ask for price



3. patro / 3rd floor