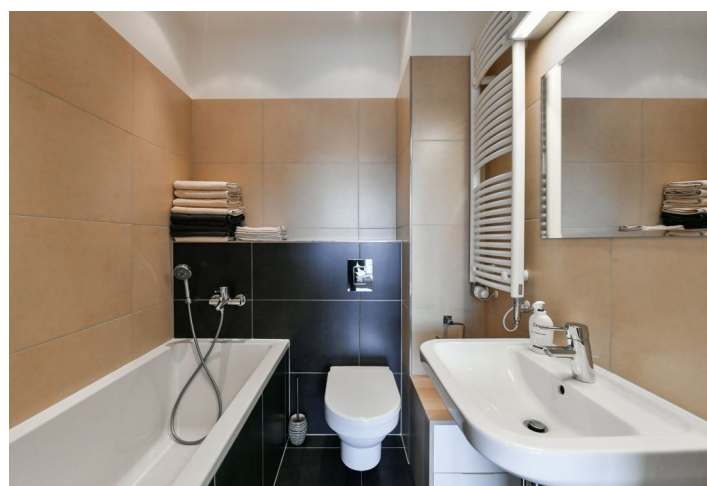
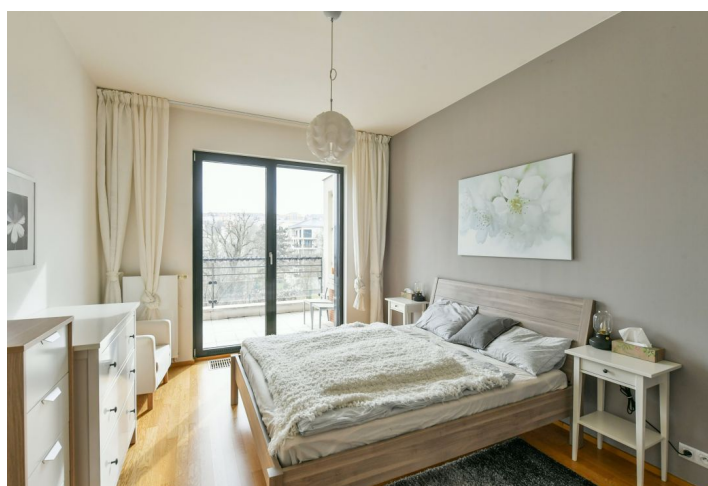




## Apartment One-bedroom (2+kk)

€ 880 | CZK 22 000

56 m², Prague 6, Břevnov, Na Petynce





## Apartment One-bedroom (2+kk)

€ 880 | CZK 22 000

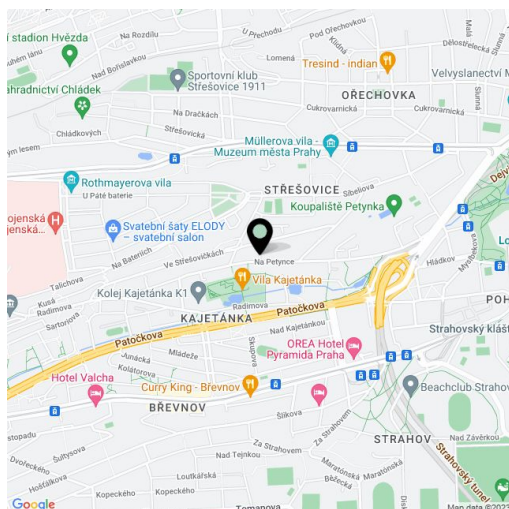
56 m², Prague 6, Břevnov, Na Petynce

Total area	67 m²
Floor area*	56 m²
Terrace	11 m²
Parking	Garage parking.
Garage	Yes
Cellar	Yes
PENB	B
Reference number	38715
Available from	Immediately

This is a fully furnished 1-bedroom apartment with an 11 m² south facing terrace and views of the Kajetánka park. Situated on the first floor in a building that underwent full renovation and was transformed into a modern residence with camera system and underground parking. Located in a quiet residential area just a 15 minute walk from the Prague Castle, within easy reach of the Břevnovský Monastery and the popular Ladrunka Park, and with quick access to international schools, the city center and the airport.

The interior includes a living room with a dining area and a fully fitted open plan kitchen, a bedroom, a bathroom with a bathtub and a toilet, a utility room with a guest toilet, and an entrance hall with a built-in wardrobe. The **terrace** is accessible from both the bedroom and the living room.

**Hardwood floors**, heated tiles, French windows, security entry door, central heating, washing machine, dishwasher, microwave oven, video entry phone, **basement storage unit**, lift. A **garage parking** space is included. Possible to rent another garage parking space at CZK 2,000/mo. Monthly deposit for service charges and electricity : CZK 5, 000. Available from April 1, 2021.



\* Area of the unit according to the Civil Code. The area consists of the sum total area of the entire unit bounded by perimeter walls.