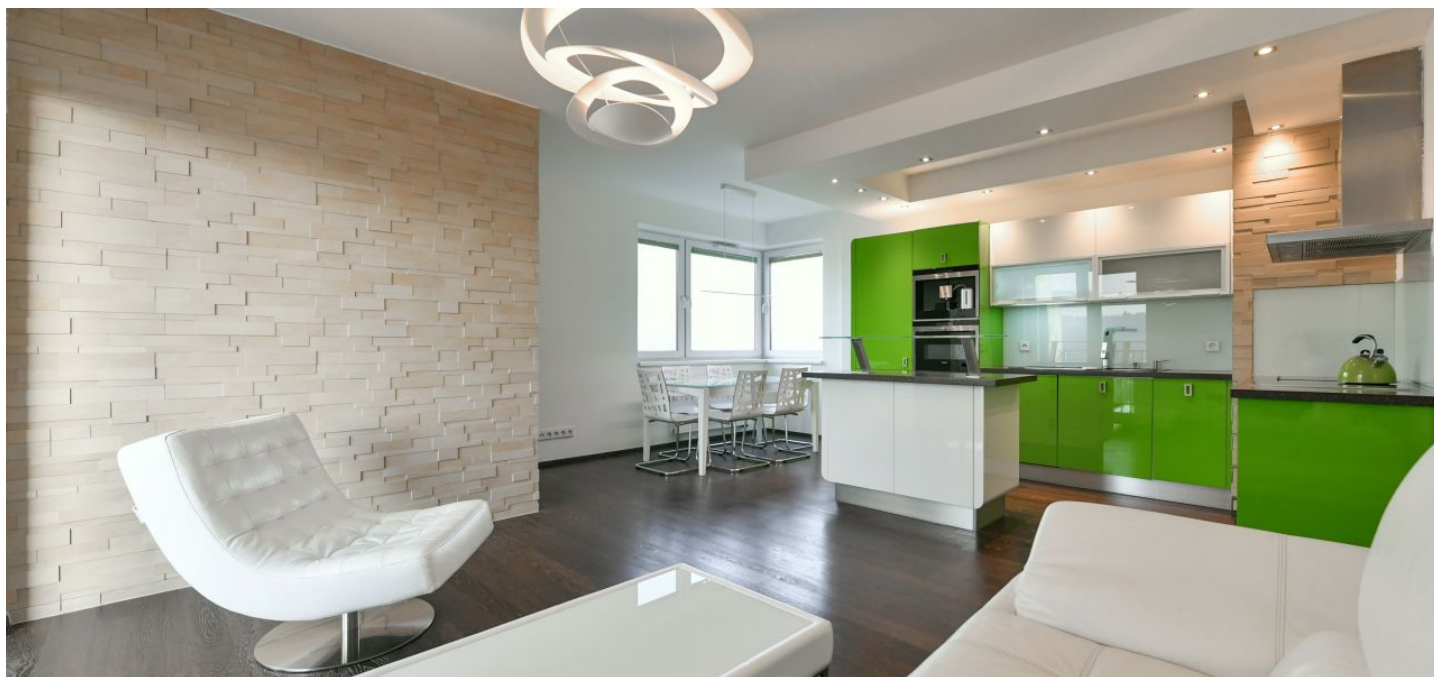




## Apartment Two-bedroom (3+kk)

Rented

91 m<sup>2</sup>, Prague 6, Bubeneč, Jednořadá





## Apartment Two-bedroom (3+kk)

Rented

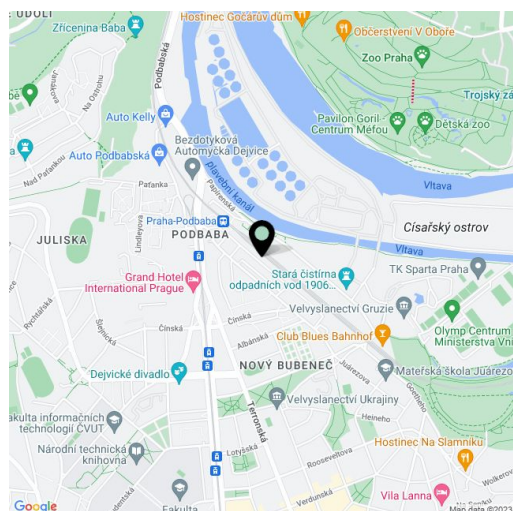
91 m<sup>2</sup>, Prague 6, Bubeneč, Jednořadá

Total area	97 m <sup>2</sup>
Floor area*	91 m <sup>2</sup>
Loggia	6 m <sup>2</sup>
Parking	Two garage parking spaces.
Garage	Yes
Cellar	Yes
PENB	B
Reference number	38786
Available from	Immediately

Boasting an enclosed balcony offering views of the green Baba Hill, this is a furnished 2-bedroom apartment on the fourth floor of a modern building with a lift and parking. Located in a sought after residential neighborhood in Bubeneč, Prague 6, just a short walk from Stromovka Park, with quick bus connection to Hradčanská metro station (five min. to the city center). Within walking distance of Dejvická metro station, the Czech Technical University campus and full amenities, conveniently located for the airport and numerous international schools.

The interior features a living room with a dining area, a fully fitted open plan kitchen and access to the **enclosed balcony**, a master bedroom with a fitted **walk-in closet**, a study / second bedroom with built-in storage, a shower room, a separate toilet, and an entrance hall with more storage.

**Quality equipment and finishes, hardwood floors**, heated tiles, security entry door, central heating, blackout plisse shades, light dimmers, insect nets, washing machine, Siemens kitchen appliances, dishwasher, induction cooktop, grill, combination oven, plate warming drawer, coffee maker, alarm, **cellar**. **Two garage parking spaces** are included. Fixed payment for service charges and utilities CZK 5,000/month.



\* Area of the unit according to the Civil Code. The area consists of the sum total area of the entire unit bounded by perimeter walls.