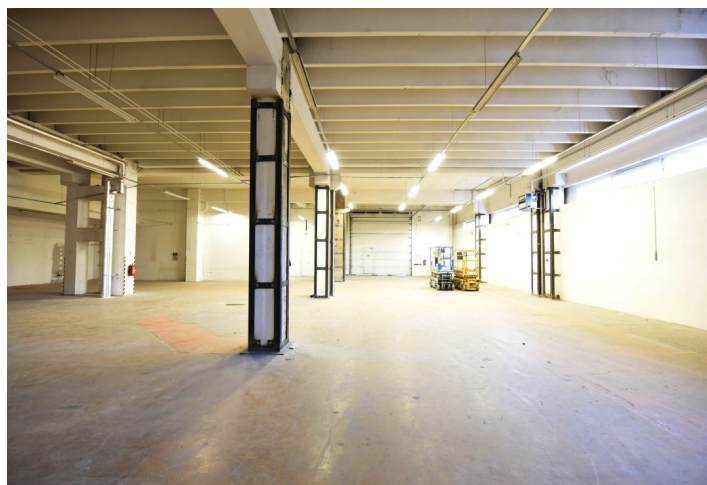
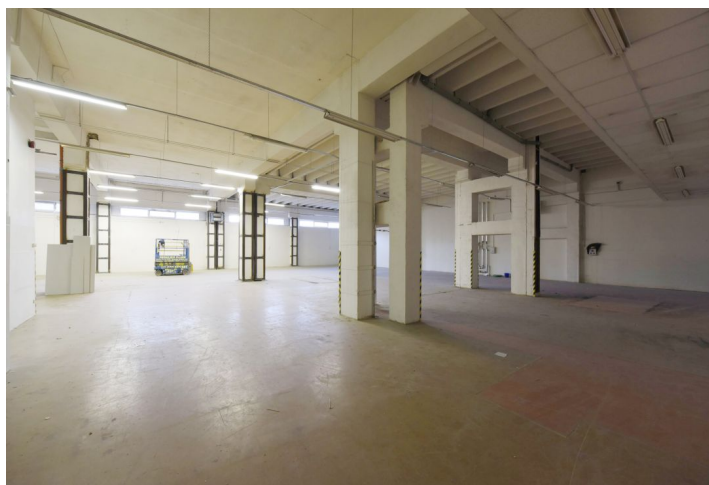
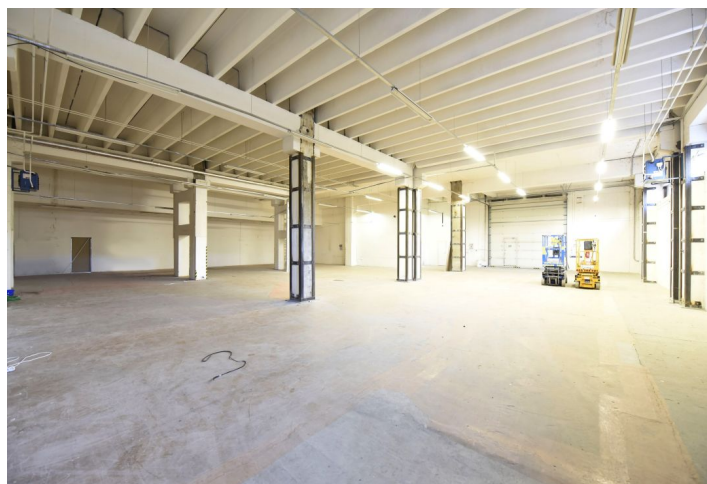
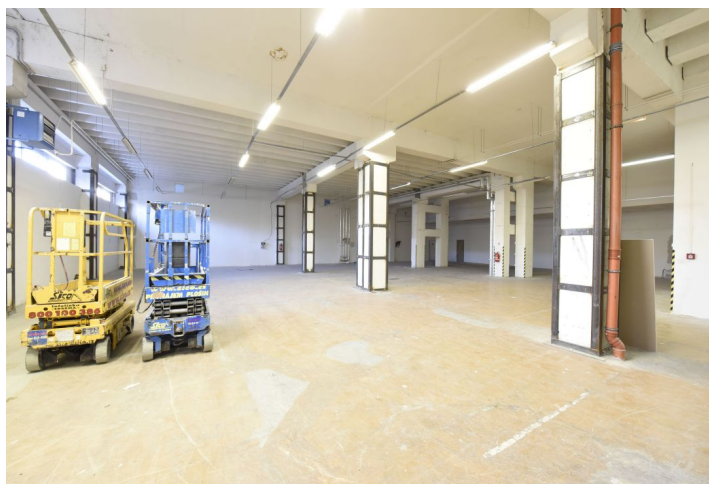




Warehouse space

Rented

600 m², Prague 7, Holešovice, Jankovcova





Warehouse space

600 m², Prague 7, Holešovice, Jankovcova

Rented

Service price	67 CZK monthly per m ²
Total area	600 m ²
Ceiling height	—
Floor loading capacity	—
Column grid structure	—
Structure	—
PENB	G
Reference number	38824

Cca 600 sq.m of warehouse space for lease on the ground floor in administrative complex, which consists of five buildings with 20,000 sq.m. of office space and 5 000 sq.m. of warehouse/storage place.

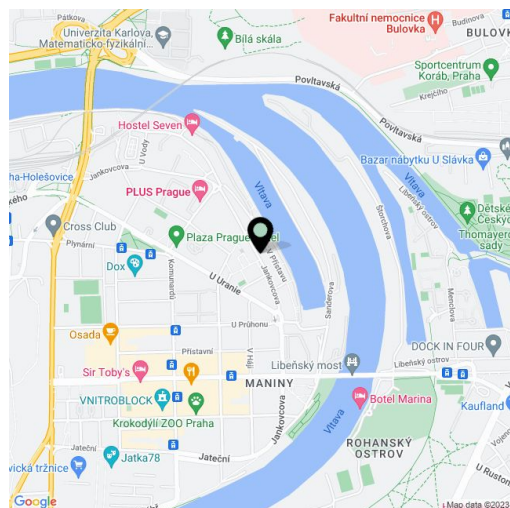
Location:

In close vicinity of tram stops with direct connections to metro stations Palmovka (line B), Nadraží Holešovice and Vltavská (line C). Good access by car, connection to D1, D8, D10 highways.

Features and Services:

- Reception and cafeteria on the ground floor
- 24/7 security
- Internet and telephone connection
- Clear height 5,25 m
- 2 loading gates
- Parking in the area

Rental and service charges are listed without VAT. Lessee pays no commission.





Warehouse space

600 m², Prague 7, Holešovice, Jankovcova

Rented

