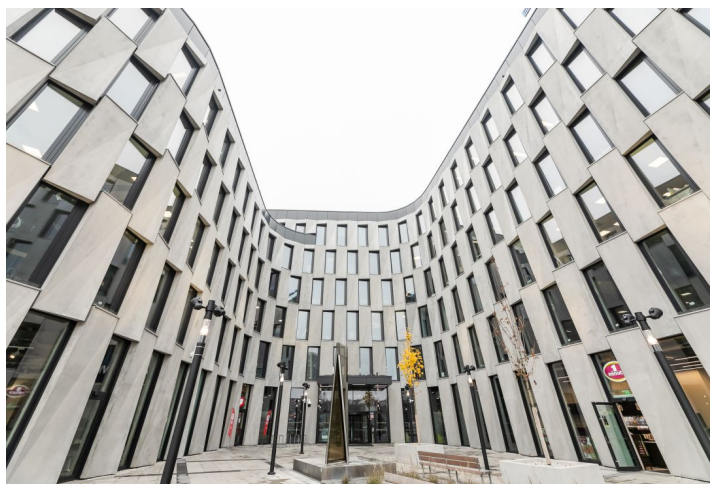
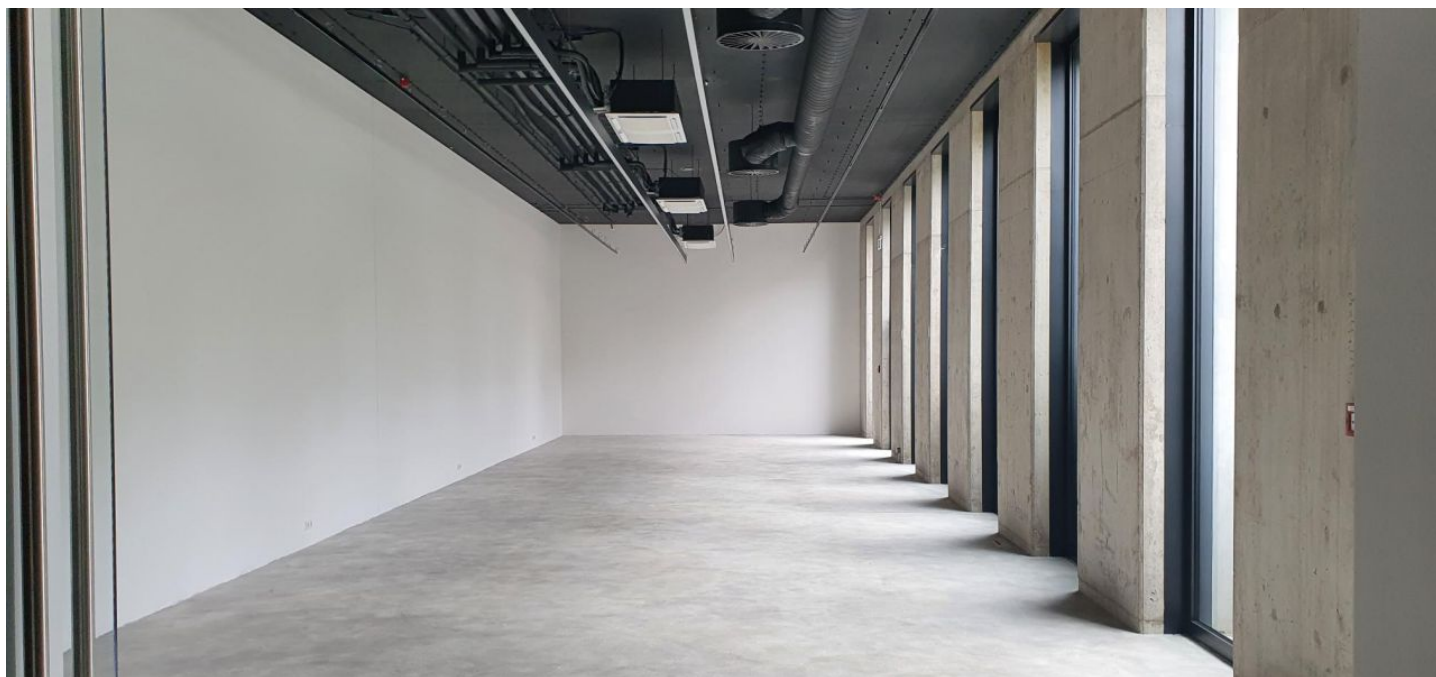




Office space

Prague 6, Vokovice, Evropská

Rented





Office space

Prague 6, Vokovice, Evropská

Rented

Service price	140 CZK monthly per m ²
Available area	182 m ²
Cellar	-
Parking	EUR 120 / ps / month
PENB	A
Reference number	38868

Offices for lease on the ground floor of the new multifunctional center . The project consists of two separate buildings offering leasable office, retail and storage space.

The space can not be used as a medical facility.

Location:

The complex is located on the street Evropská, which allows excellent connection to the international Vaclav Havel airport Praue and also to the city center. Metro station Nádraží Veveslavín (line A), tram and bus stops next to the building. Easy access to Prague circle.

Features and Services:

- LEED Platinum certification
- Flexible office space
- Kitchenettes for each tenant on floor
- External sunblinds with automatic control (inc. manual control)
- System ventilation moduls for fresh air supply
- Central ventilation system, heating by bench radiators, cooling by ceiling induction units
- Raised floors with floor boxes
- Efficient and sophisticated BMS
- Representative receptions
- 24h security
- 24/7 access by magnetic cards
- CCTV
- Smoke detectors and spinklers
- Barrier free access
- Facility manager on site
- Bike room with showers and bike racks
- Storage and archive spaces
- Restaurant / café + other services within the building
- Underground parking

Under offer.

Rental and service charges are listed without VAT. Lessee pays no commission.

