



Apartment One-bedroom (2+kk)

Rented

51 m², Brno-město, Brno - Bohunice, Studentská





Apartment One-bedroom (2+kk)

Rented

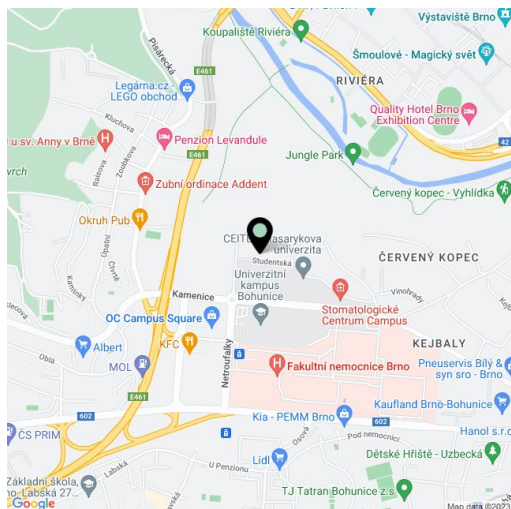
51 m², Brno-město, Brno - Bohunice, Studentská

Total area	58 m ²
Floor area*	51 m ²
Balcony	7 m ²
Parking	Garage parking.
Garage	Yes
Cellar	Yes
Service price	5000 CZK Monthly
PENB	B
Reference number	38935
Available from	Immediately

This is an exclusive offer of a fully furnished 1-bedroom apartment with a balcony, on the third floor in the contemporary LIVE IN residence suitable for, but not limited to students. Situated in a quiet residential area in close vicinity of the Campus Square shopping center, Brno University campuses, the CEITEC research center, the Moravian Library and the University Hospital Brno. Located on the edge of a quiet neighborhood with full amenities within immediate reach, about 10 min. from the city center, near a bus stop. Local amenities include restaurants, a swimming pool, parks, a forest, and the D1 highway access road.

The apartment features a living room with a fully fitted open plan kitchen and balcony access, a bedroom with built-in storage, a shower room with a toilet, a walk-in closet, and an entrance hall with built-in storage.

Built-in wardrobes and storage, **hardwood floors**, tiles, central heating, triple glazed aluminum floor-to-ceiling windows, automatic exterior blinds, **air-condition**, microwave oven, lift, 7,2 m² cellar. A **garage parking** space is available at an additional fee. Monthly deposit for service charges and utilities: CZK 5000.



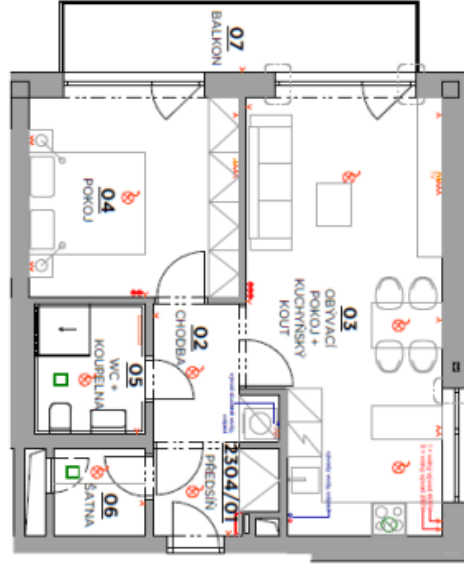
* Area of the unit according to the Civil Code. The area consists of the sum total area of the entire unit bounded by perimeter walls.



Apartment One-bedroom (2+kk)

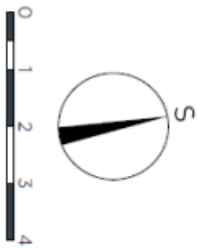
Rented

51 m², Brno-město, Brno - Bohunice, Studentská



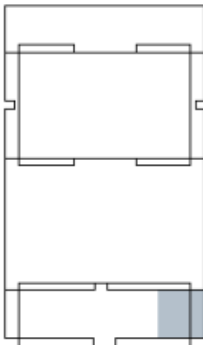
Č.M.	ÚČEL MÍSTNOSTI	PLOCHA [m ²]	PODLAHA
01	PŘEDSÍN	3,45	DŘEVĚNÁ PODLAHA
02	CHODBA	4,12	DŘEVĚNÁ PODLAHA
03	OBÝVAČÍ POKOJ + KUCHYNSKÝ KOUT	23,90	DŘEVĚNÁ PODLAHA
04	POKOJ	12,85	DŘEVĚNÁ PODLAHA
05	WC + KOUPELNA	4,30	KERAMICKÁ DLAZBA
06	SÁTNĀ	2,40	DŘEVĚNÁ PODLAHA
07	BALKON	7,20	BETONOVĀ PREFAB. DESKA
		57,92	

BYT Č.	PLOCHA [m ²]	VELIKOST BYTU
2304	53,0	ByT 2 + lk



CAMPUS RESIDENTIAL AREA C

- LEGENDA ZNAČEK**
- ⚡ el. zásuvka 230 V/16 A
 - ⚡ volný vývod 230 V
 - ⚡ volný vývod 400 V
 - h dŕavá zásuvka 2~R145
 - TV zásuvka
 - volný vývod pro svítidlo
 - venkovní svítidlo
 - ovladač žaluzí
 - napojení kuch. digestoře Ø 125
 - stropní odtah VZT
 - el. topný žebřík
 - bytový rozváděč EL+SLP
 - vývody teple a studené vody (ventil 1/2")
 - odpad DN 50



Vyobrazené zařízení bytu (obývací, kuchyňská linka) nejsou součástí dodávky. Rozsah je specifikován ve standardu bytu. Investor si vyhradzuje právo na drobné úpravy.

2017 - 01 - 06
Detail

1 : 75
Měřítko

2304 (C2 - 3.NP)
Označení bytu

CRA C	000	00	2304	00
-------	-----	----	------	----