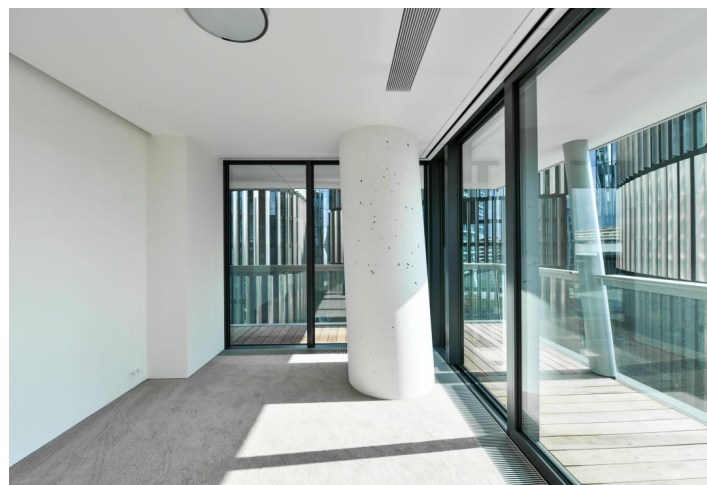
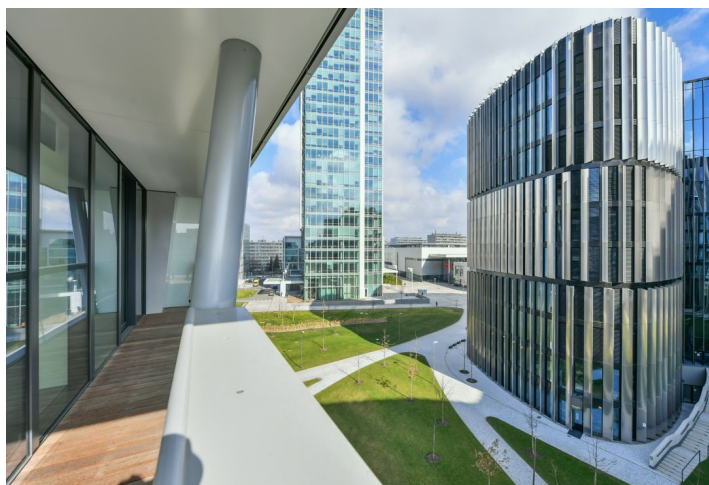




## Apartment Two-bedroom (3+kk)

Rented

80.34 m<sup>2</sup>, Praha 4, Krč, Milevská





## Apartment Two-bedroom (3+kk)

Rented

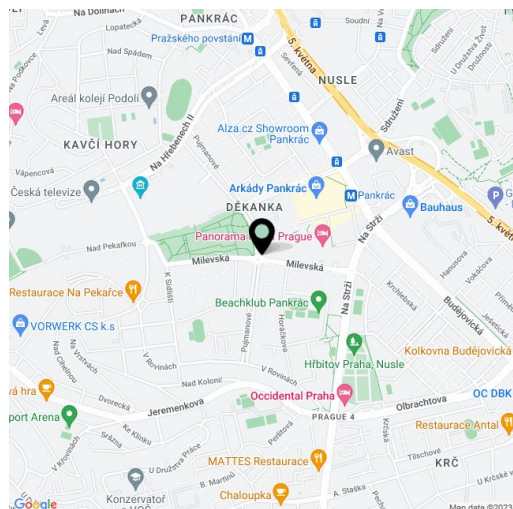
80.34 m<sup>2</sup>, Praha 4, Krč, Milevská

|                  |                    |
|------------------|--------------------|
| Total area       | 108 m <sup>2</sup> |
| Floor area*      | 80 m <sup>2</sup>  |
| Terrace          | 28 m <sup>2</sup>  |
| Parking          | Garage parking.    |
| Garage           | Yes                |
| Cellar           | Yes                |
| PENB             | B                  |
| Reference number | 38937              |
| Available from   | Immediately        |

High standard apartment in an exceptional building. This is a brand new 2-bedroom apartment surrounded by a 27 m<sup>2</sup> L-shaped terrace boasting far reaching open views. Set on the 7th floor of the unique, 104 m high, thirty-floor V Tower highrise, currently the tallest residential building in Prague. Located in the Pankrác business zone in close vicinity of the Central Park and Kavčí Hory Park, convenient to Prague 4 international schools. Numerous amenities include a 24/7 reception offering concierge services, a fitness center, an indoor pool, a spa, a sauna, a golf simulator, a conference room, a screening room and more. The landmark building benefits from efficient and sustainable technological solutions incl. renewable energies, healthy materials, economical cooling, heating and ventilation.

The interior includes a living room with a dining area and a fully fitted open plan kitchen, two separate bedrooms, a bathroom (walk-in shower, toilet), an additional separate toilet, and an entrance hall with built-in wardrobes and storage. The **terrace** is accessible from all main rooms.

Floor-to-ceiling French windows, natural materials, **hardwood oak floors**, **marble tiling**, carpets in bedrooms, security entry door, automatic interior blinds, ceiling cooling, washer / dryer, dishwasher, microwave oven, video entry phone, 7 m<sup>2</sup> **cellar**. A **garage parking** space is included. Monthly deposit for service charges, water and heating: CZK 8,932. Electricity is billed separately (transfer to the tenant).



\* Area of the unit according to the Civil Code. The area consists of the sum total area of the entire unit bounded by perimeter walls.