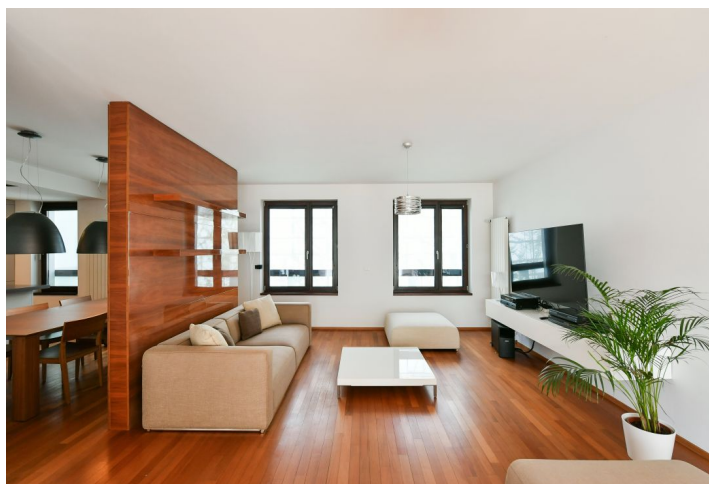
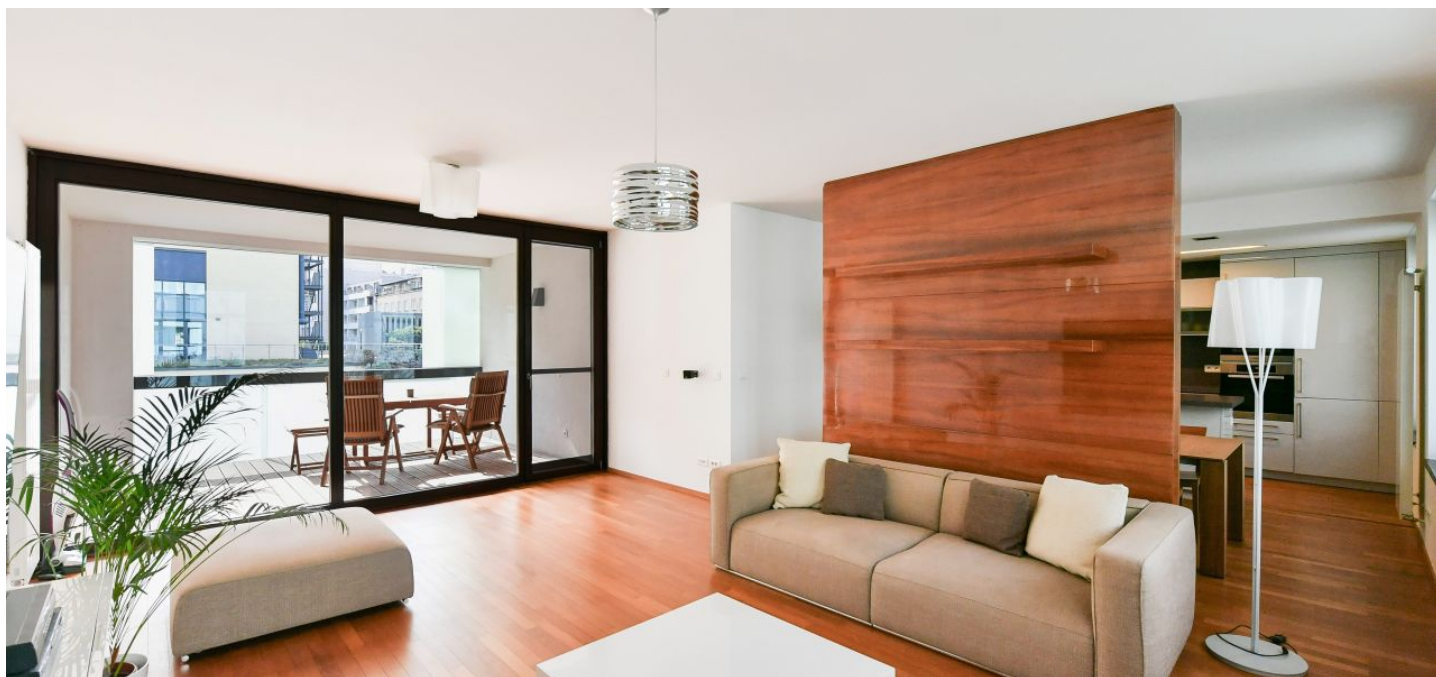




## Apartment One-bedroom (2+kk)

Rented

90 m<sup>2</sup>, Prague 8, Karlín, Šaldova





## Apartment One-bedroom (2+kk)

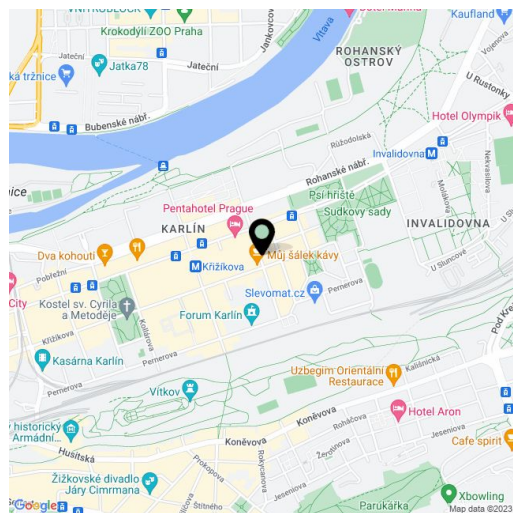
**Rented**90 m<sup>2</sup>, Prague 8, Karlín, Šaldova

Total area	105 m <sup>2</sup>
Floor area*	90 m <sup>2</sup>
Loggia	15 m <sup>2</sup>
Parking	Garage parking.
Garage	Yes
Cellar	Yes
Service price	Deposit for service, water, heating, and garage maintenance: CZK 6,300/month. Electricity is billed separately.
PENB	C
Reference number	39152
Available from	Immediately

Boasting an enclosed balcony and views of the quiet green courtyard, this premium, completely furnished apartment is on the 3rd floor of a fully refurbished industrial building converted into the Cornlofts Šaldova modern development. Located on a quiet street in a highly sought-after Prague 8 area close to the Karlín business zone, with full amenities and quick connections to the city center, just three minutes from the Křižíkova metro station and tram stop. Building amenities include elevators, security cameras, a shared landscaped courtyard garden, and underground parking.

The interior features a living room with a fully fitted open plan kitchen, dining area, and access to the **enclosed balcony**, a bedroom with a full wall of wardrobes, a bathroom including a bathtub with a shower screen, a separate toilet, and an entrance hall with built-in wardrobes and storage.

**High quality materials and finishes**, Italian furniture, **hardwood floors**, tiles, security entry door, insect nets, central heating, **Miele** appliances, washer, dryer, dishwasher, induction cooktop, microwave oven, basic kitchenware, iron and ironing board, TV, garden furniture, **cellar**, chip entry to the building. A **garage parking** space is included.



\* Size of the unit according to the Housing Act.  
The area consists of the sum total of the internal area of every room.