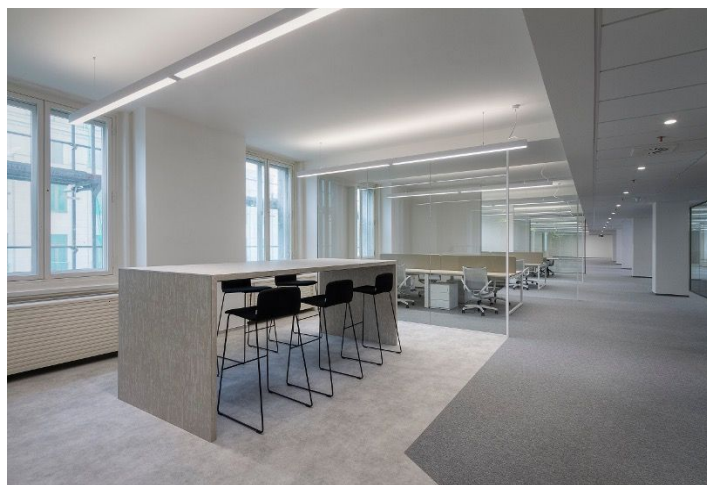
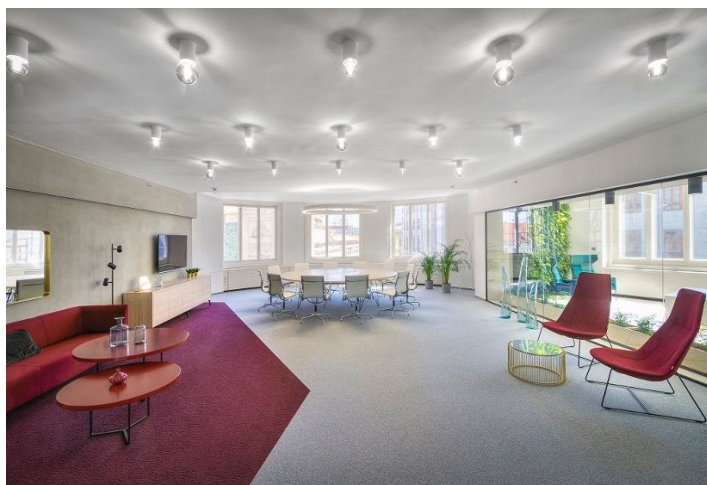
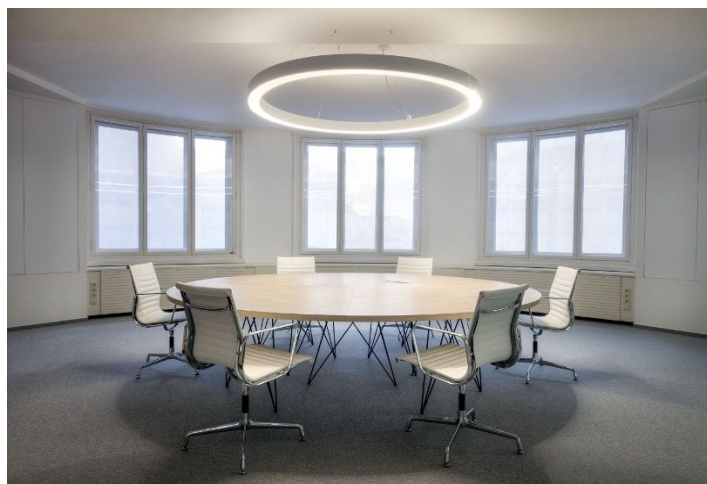
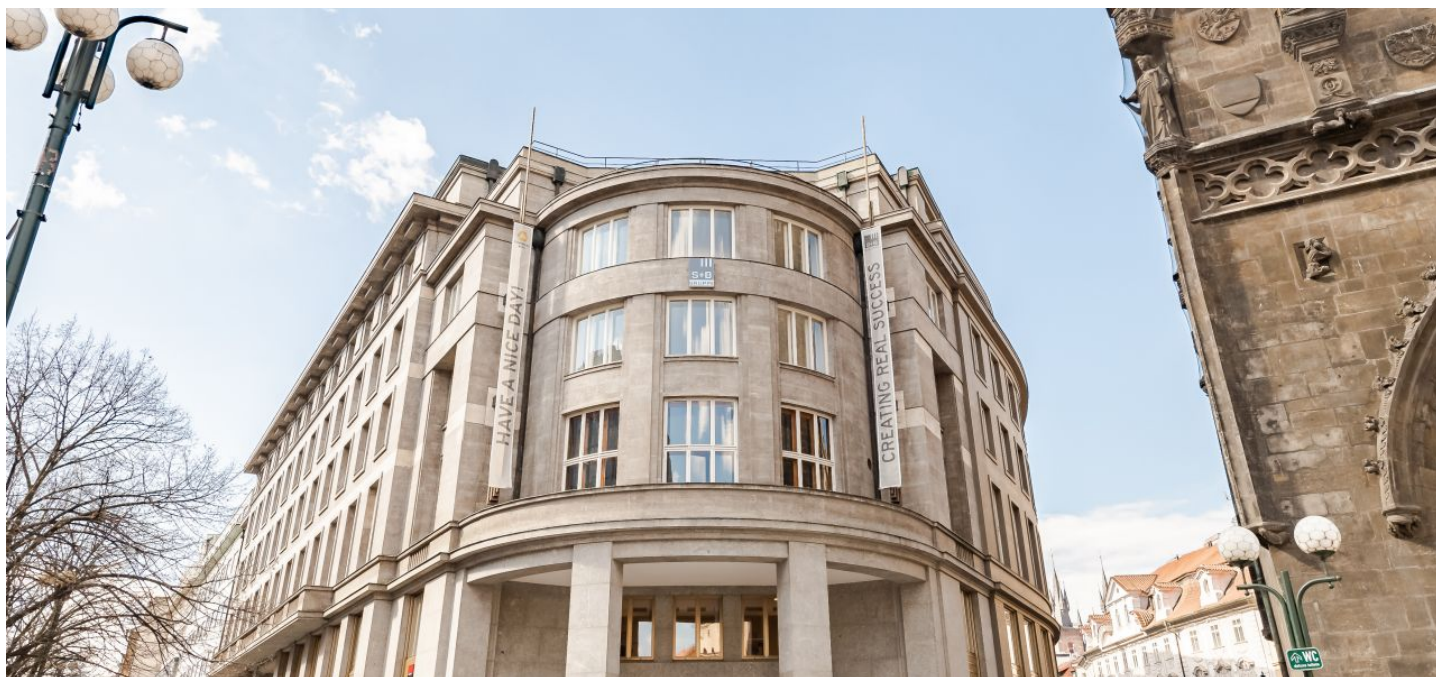




Office building

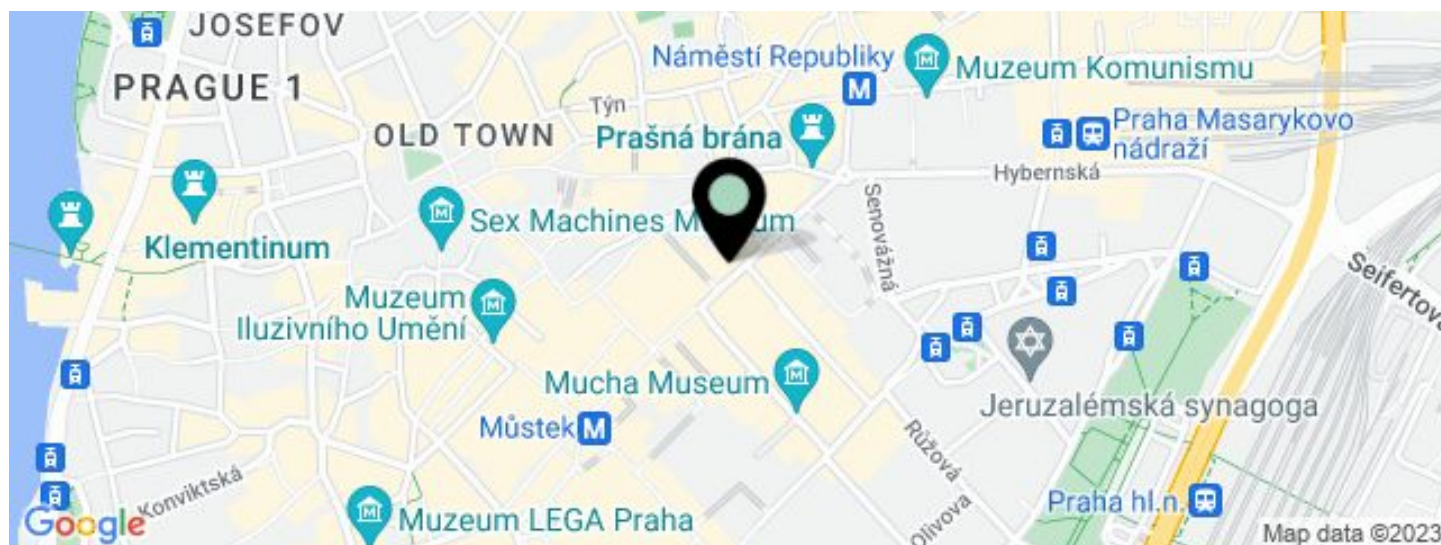
Prague 1, Staré Město, Na Příkopě

Rented



**Office building****Rented**

Prague 1, Staré Město, Na Příkopě



UNIT	AVAILABLE AREA	SERVICES	PARKING	MONTHLY RENT
Retail space, ground floor	127 - 1680 m ²	150 CZK monthly per m ²	No	Ask for price
Retail space, 1st underground floor	1485 m ²	150 CZK monthly per m ²	No	Ask for price
Retail space, 2nd underground floor	382 - 1244 m ²	150 CZK monthly per m ²	No	Ask for price



Office building

Prague 1, Staré Město, Na Příkopě

Rented

Service price	150 CZK monthly per m ²
Total building area	14 653 m ²
Tenant consumption	—
Parking	-
Parking service charges	—
Parking ratio	—
Certification	—
PENB	G
Reference number	39245

Completely renovated office space for lease in a majestic building located in the historic city center near Old Town and Wenceslas squares. The building combines historically protected interiors with the latest design trends. In the vicinity of the building is also the late Gothic Powder Tower, which is considered one of the main symbols of Prague. The size of a typical floor is 1,600 sq. m. On the 5th floor is a terrace that offers unique views. Parking spaces are available in facilities within walking distance.

Location:

Excellent accessibility by public transport. The Náměstí Republiky metro station (line B) can be reached in 2 minutes, the Hlavní nádraží metro station in 8 minutes, the Náměstí Republiky tram stop in 2 minutes, and The Václav Havel Airport is a 35-minute drive away. In the vicinity of the building are also all civic amenities, boutiques, cafes, restaurants, banks, and a shopping center.

Features and services:

- Openable windows
- 24/7 access
- CCTV
- Building management system and power backup generator
- Toilets
- HVAC
- Elevators
- Lighint
- Sprinklers
- EPS smoke detectors

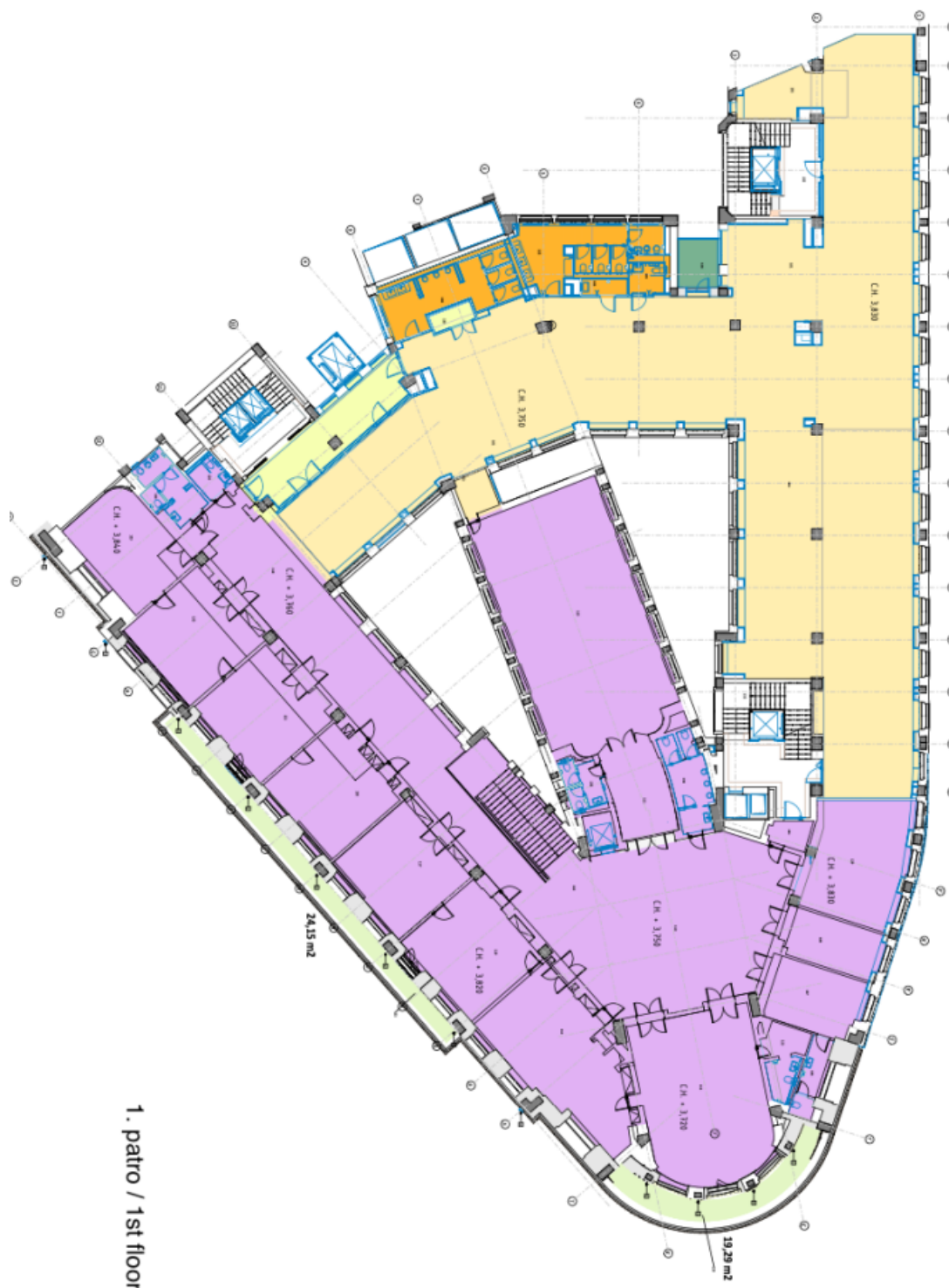
Lease and service charges listed without VAT. Lessee pays no commission.



Office building

Prague 1, Staré Město, Na Příkopě

Rented



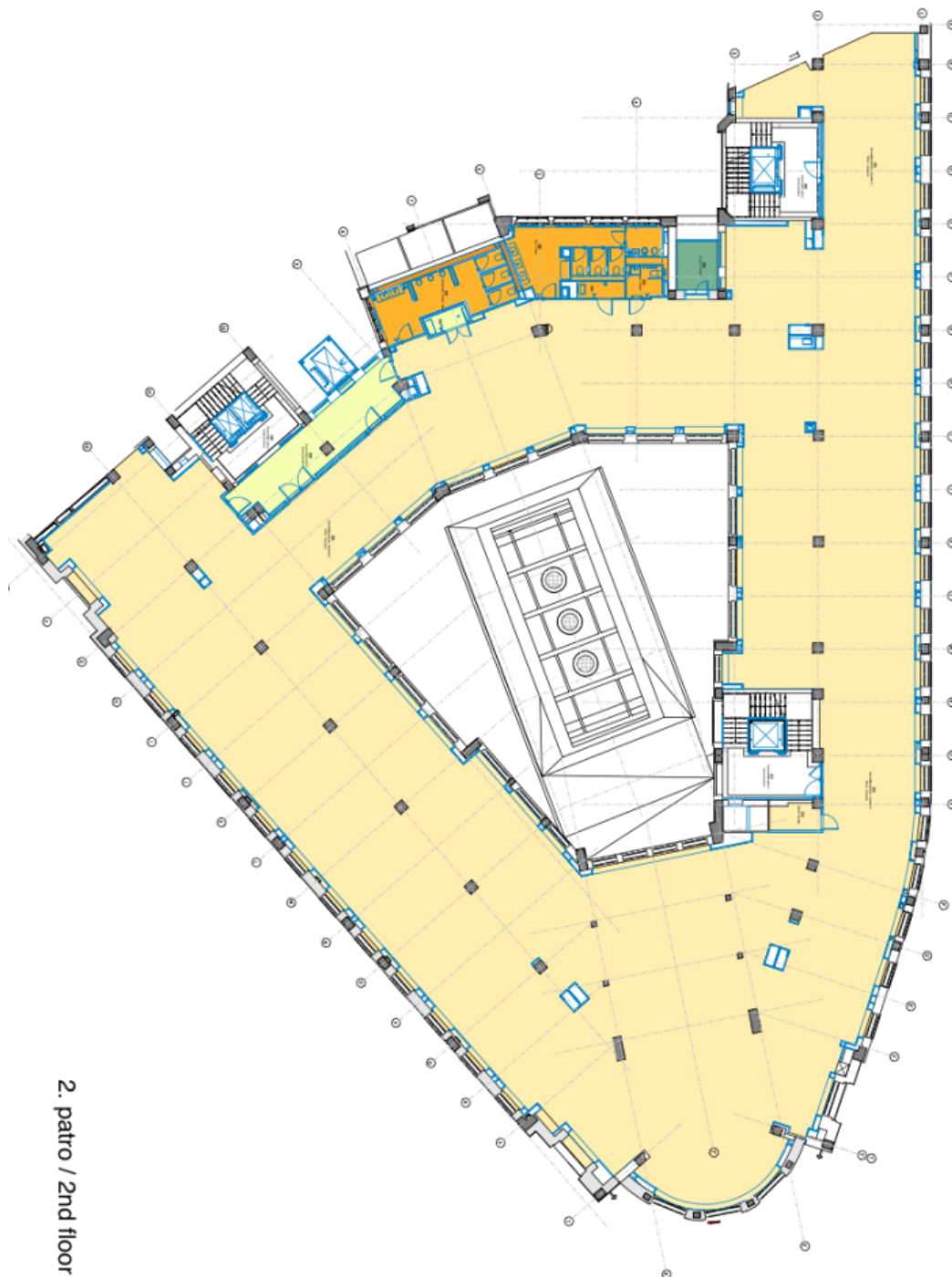
1. patro / 1st floor



Office building

Prague 1, Staré Město, Na Příkopě

Rented



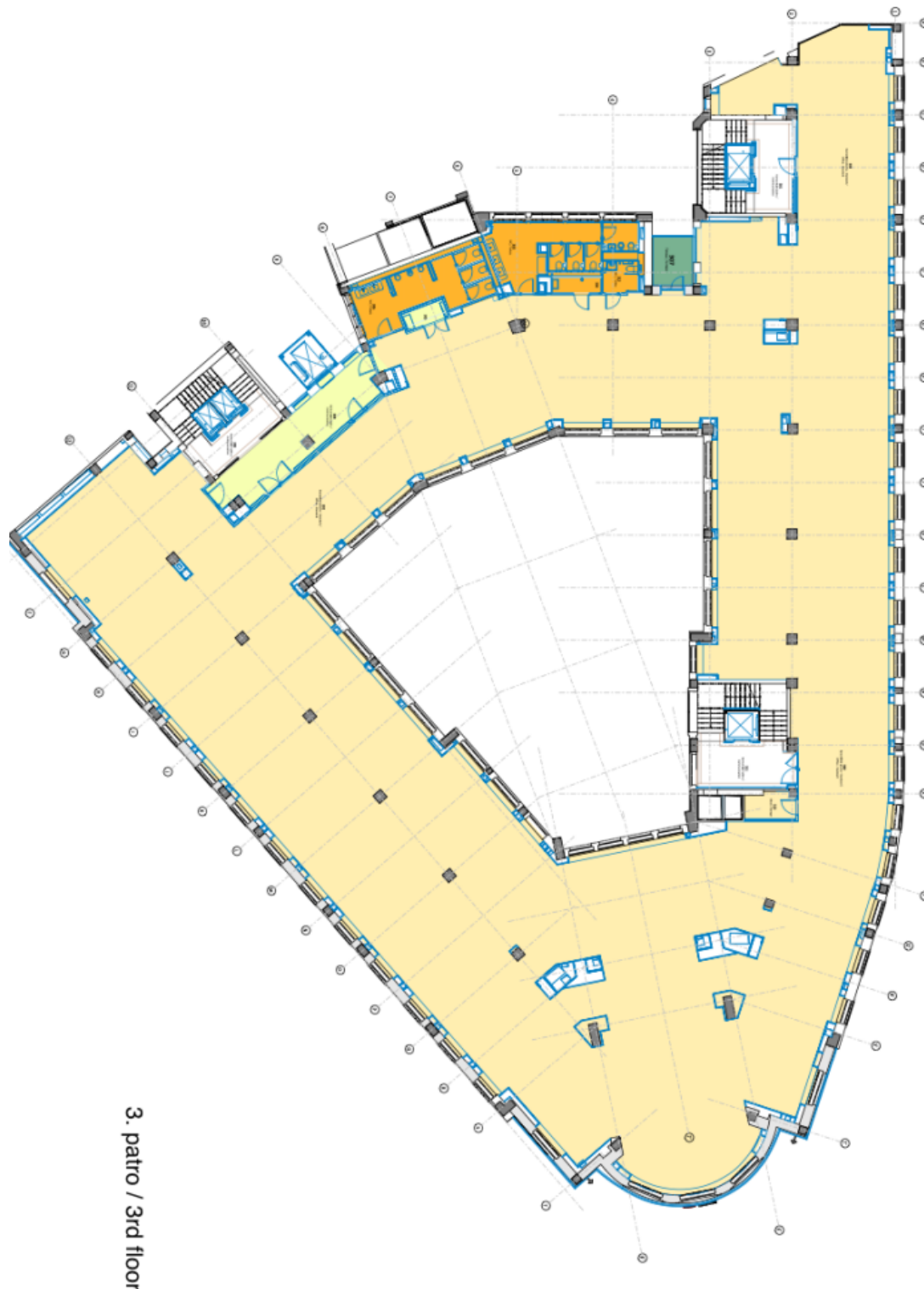
2. patro / 2nd floor



Office building

Prague 1, Staré Město, Na Příkopě

Rented



3. patro / 3rd floor



Office building

Prague 1, Staré Město, Na Příkopě

Rented



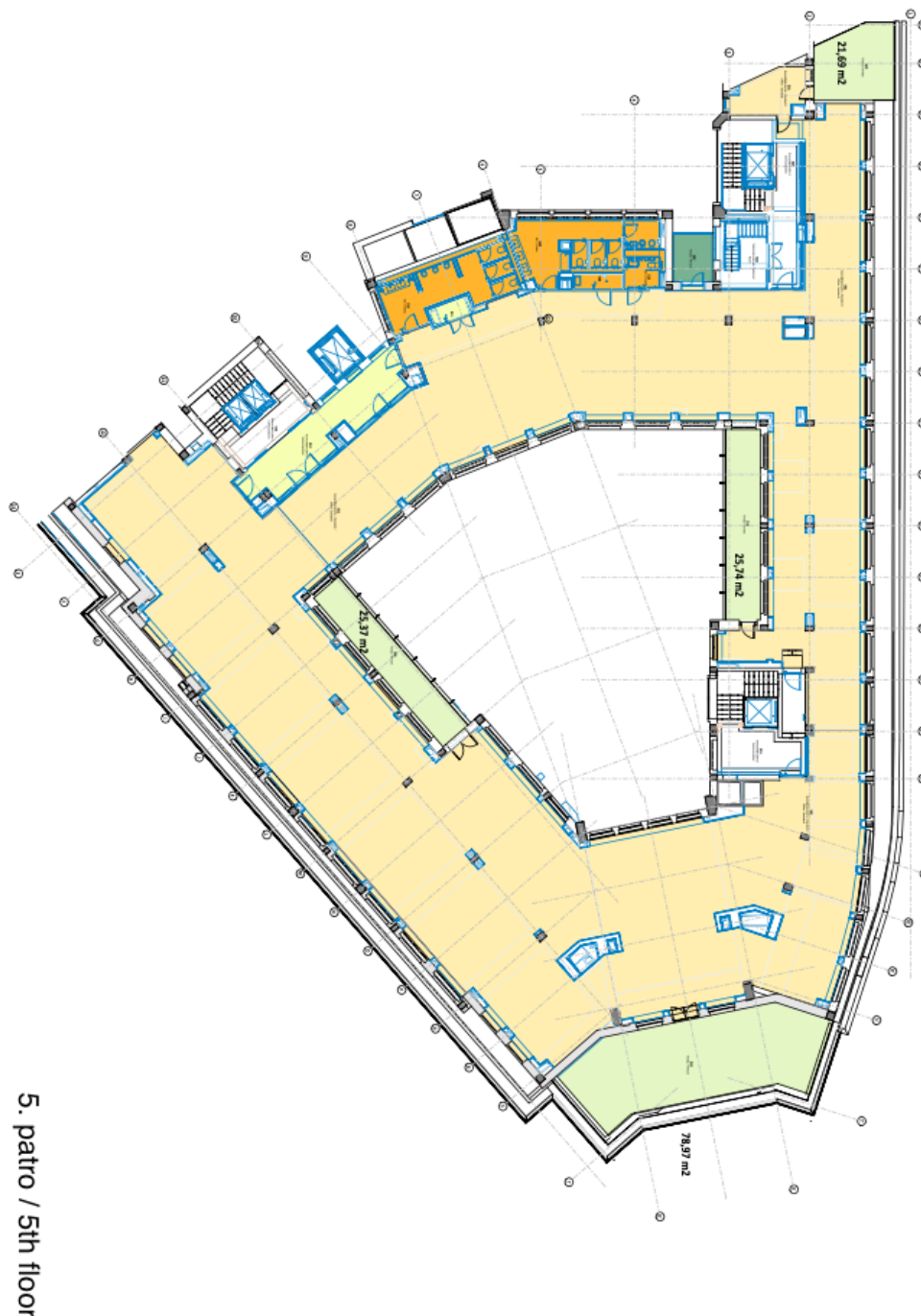
4. patro / 4th floor



Office building

Prague 1, Staré Město, Na Příkopě

Rented



5. patro / 5th floor