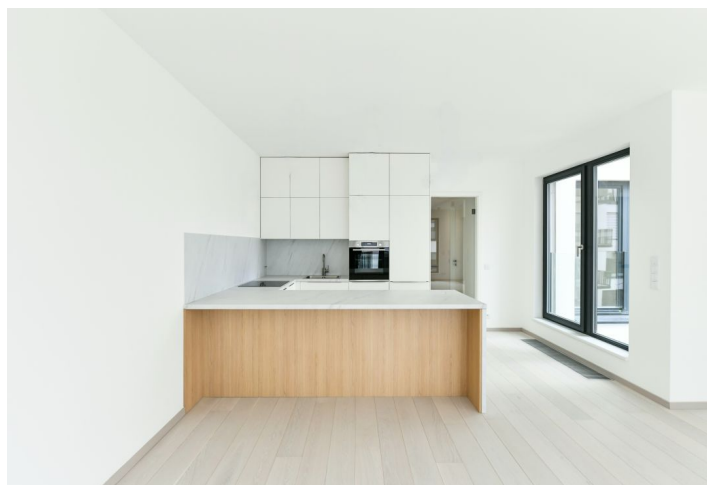
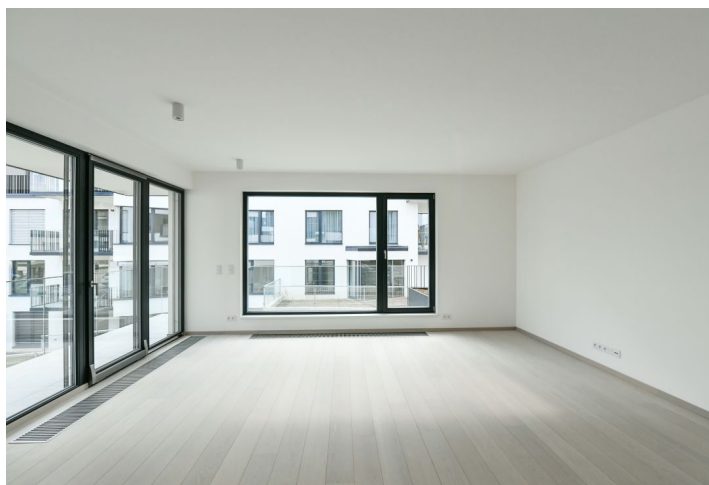
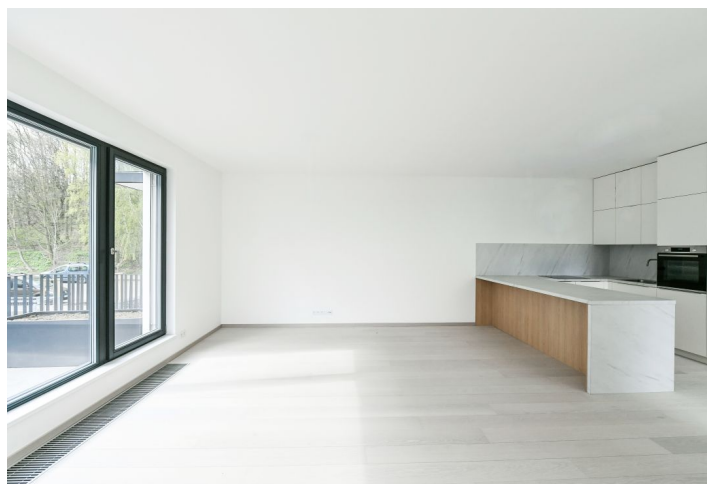




Apartment Two-bedroom (3+kk)

Rented

87.4 m², Praha 5, Košíře, Na Pomezí





Apartment Two-bedroom (3+kk)

Rented

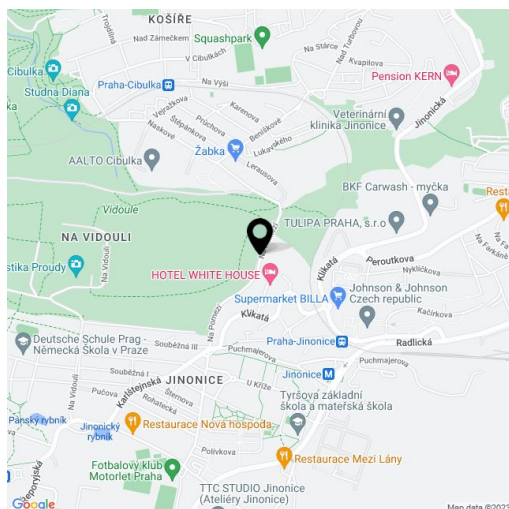
87.4 m², Praha 5, Košíře, Na Pomezí

Total area	108 m ²
Floor area*	87 m ²
Balcony	21 m ²
Parking	Garage and outdoor parking.
Garage	Yes
Cellar	Yes
PENB	B
Reference number	39279
Available from	Immediately

This brand new high quality 2-bedroom apartment with a 20.6 m² balcony offers beautiful views of Prague. Situated on the first floor of a new residential building with parking in a quiet green Prague 5 neighborhood on the edge of the Cibulka forest park, close to Vidoule natural preserve. Conveniently located for amenities and services, the Jinonice metro station, Nový Smíchov / Anděl commercial center and the German School.

The interior features a living room with a dining area, a fully fitted open plan kitchen and access to a large L-shaped balcony, two separate bedrooms, a bathroom (bathtub, toilet), an additional separate toilet / storage room, and an entrance hall with built-in wardrobes.

Smart home system, heat recovery system / cooling, hardwood oak floors, tiles, security entry door, exterior blinds, central heating, dishwasher, induction cooktop, master switch, 10 m² cellar, lift. 1 garage parking and 1 outdoor parking space is available at an additional fee. Monthly deposit for service charges, water and heating: CZK 4,500. Electricity is billed separately.



* Area of the unit according to the Civil Code. The area consists of the sum total area of the entire unit bounded by perimeter walls.