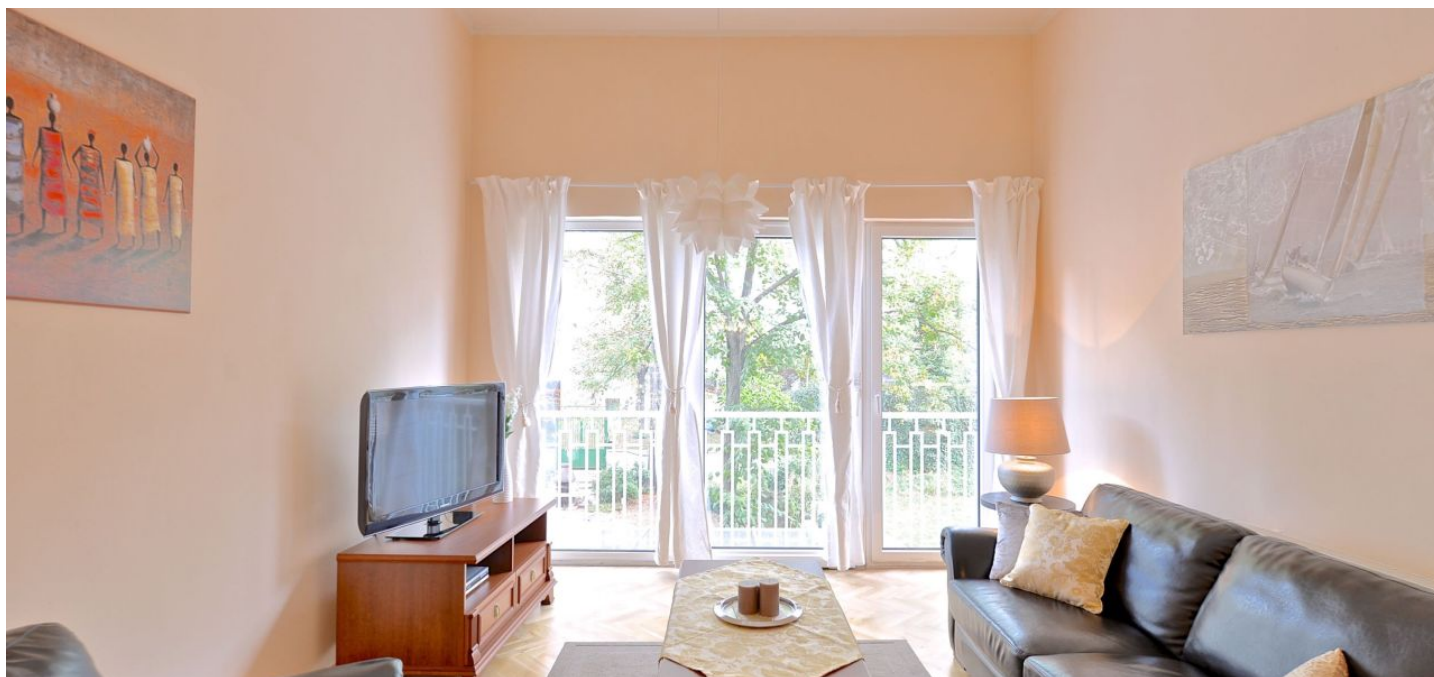




## Apartment Two-bedroom (3+kk)

Rented

96 m<sup>2</sup>, Prague 2, Vinohrady, Belgická





## Apartment Two-bedroom (3+kk)

Rented

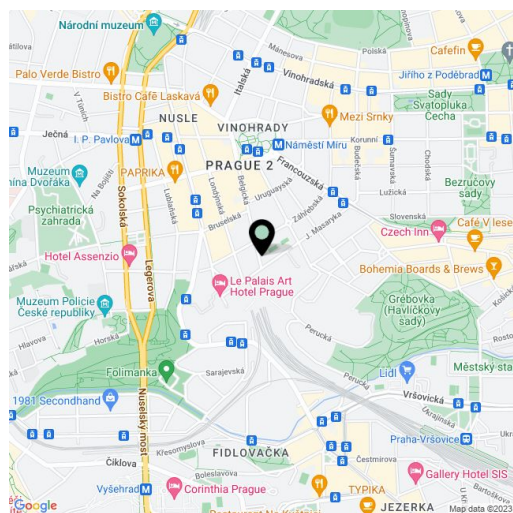
96 m<sup>2</sup>, Prague 2, Vinohrady, Belgická

Total area	96 m <sup>2</sup>
Parking	-
Cellar	-
Service price	Common building charges and deposit for utilities approx. CZK 4,500/month.
PENB	E
Reference number	3928
Available from	Immediately

Completely furnished 2-bedroom flat on the first floor of a fully reconstructed traditional building with lift and a shared back garden. Situated on a beautiful tree lined street in a trendy part of Vinohrady, one of the most desirable residential areas of Prague. Just a two minute walk from the trams and metro station at Náměstí Míru and I. P. Pavlova Squares, and couple of minutes more from the city center, with the Havlíčkovy and Riegrovy sady parks nearby. Dozens of fine restaurants, sidewalk cafes, and coffee shops in the area.

The interior includes a spacious living / dining room with wall to wall French windows overlooking the garden, a fully fitted and equipped open kitchen, two bedrooms, bathroom with tub and toilet, a guest toilet, and entry hall.

High ceilings, large built-in wardrobes in the entry hall, oak parquet floors, tiles, security entry door, washer, dishwasher, microwave oven, satellite TV connection, ADSL Internet, audio entry phone, shared garden with barbecue.



\* Area of the unit according to the Civil Code. The area consists of the sum total area of the entire unit bounded by perimeter walls.



## Apartment Two-bedroom (3+kk)

96 m<sup>2</sup>, Prague 2, Vinohrady, Belgická

Rented

