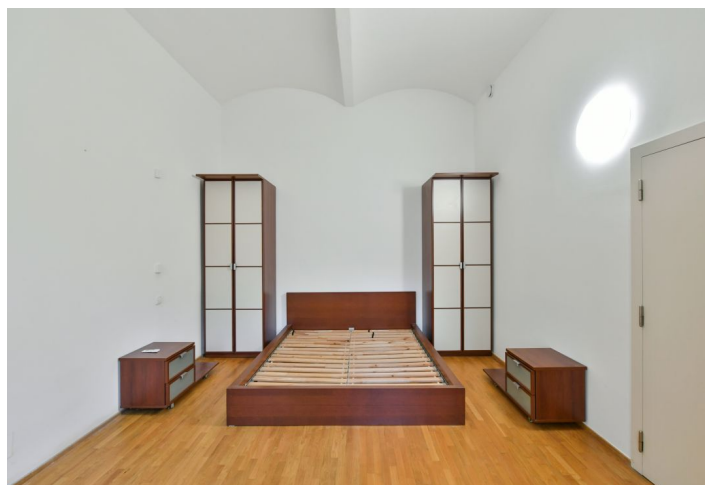
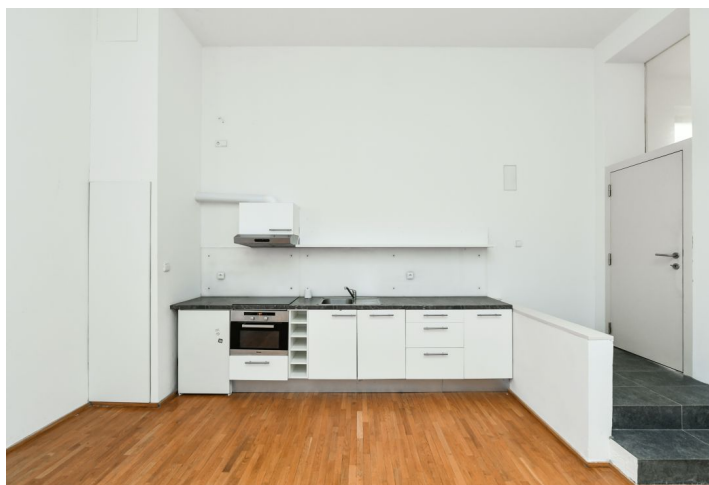
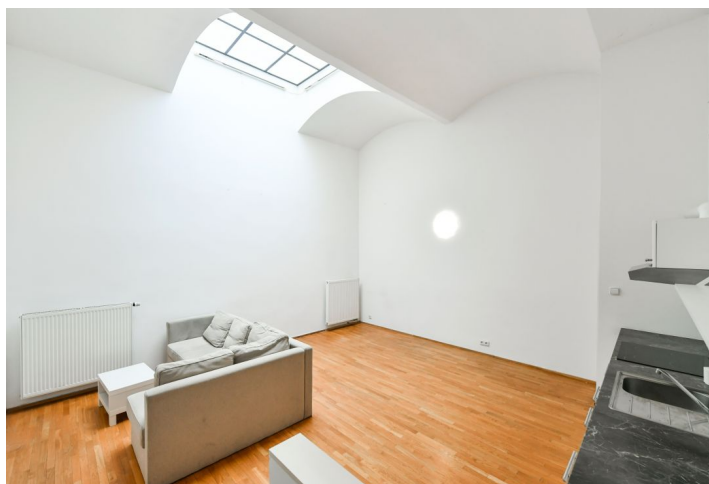




Apartment One-bedroom (2+kk)

Rented

65 m², Praha 1, Staré Město, Bílkova





Apartment One-bedroom (2+kk)

Rented

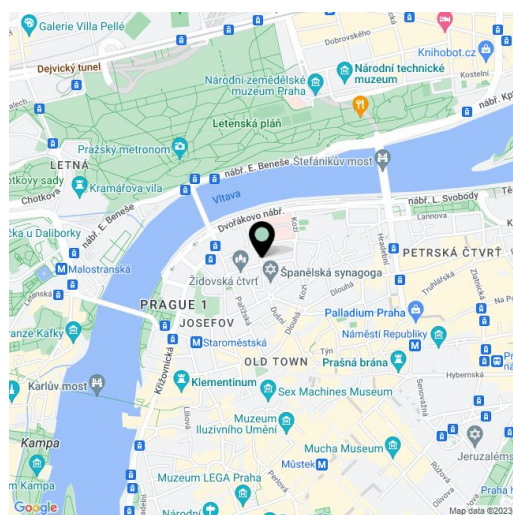
65 m², Praha 1, Staré Město, Bílkova

Total area	65 m ²
Parking	Garage parking.
Garage	Yes
Cellar	-
PENB	G
Reference number	39280
Available from	Immediately

This semi furnished 1-bedroom apartment is situated on the ground floor in the courtyard of a renovated Art Nouveau building with preserved original details. Set in a prime central location within walking distance of the Old Town Square and the Vltava riverbank, two blocks from luxurious Pařížská Street, with full amenities in the vicinity.

The interior features a living room with a fully fitted kitchen and a dining space, a bedroom, a bathroom (bathtub, toilet), and an entrance hall.

High vaulted ceilings, floating floors, tiles, gas boiler, washing machine, dishwasher. A **garage parking** space in the courtyard of the building is included in the rent. Service charges, water and electricity: CZK 2,000 per month. Gas is billed separately (transfer to the tenant).



* Area of the unit according to the Civil Code. The area consists of the sum total area of the entire unit bounded by perimeter walls.



Apartment One-bedroom (2+kk)

Rented

65 m², Praha 1, Staré Město, Bílkova

