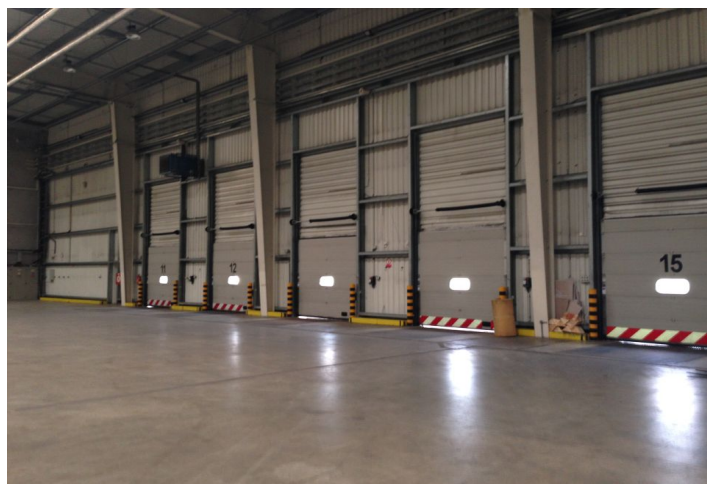




Industrial space

14 943 m², Praha-západ, Rudná, Rudná

Ask for price





Industrial space

14 943 m², Praha-západ, Rudná, Rudná

Ask for price

Total area	14 943 m ²
Available area for rent	14 943 m ²
Office area	245 m ²
Ceiling height	10 m
Floor loading capacity	5 t/m ²
Column grid structure	—
Structure	Reinforced concrete structure
PENB	D
Reference number	39292

10,943 sq.m. of industrial and **from 245 sq.m. to 4,000 sq.m.** of office space for lease in the industrial park situated in Prague-west. The area consists of 17 buildings and offers more than 160,000 m². The premises are suitable for logistics and distribution centers and flexible spaces can be adapted to specific clients requirements.

Location:

The area is situated in Rudná, in Prague-west, close to the D5 highway (Prague - Rozvadov) directly on exit 5. The area is located just 4 km from the Zličín metro station (line B) and 12 km from the international Václav Havel Airport Prague. Good public transport, bus stops close to the park.

Features and Services:

- Flexible units (storage / office / light production / showroom)
- Onsite property management
- Park maintenance
- Public parking and parking for trucks
- 3 bus stops and public transport within the park
- Canteen

Industrial/Warehouse space:

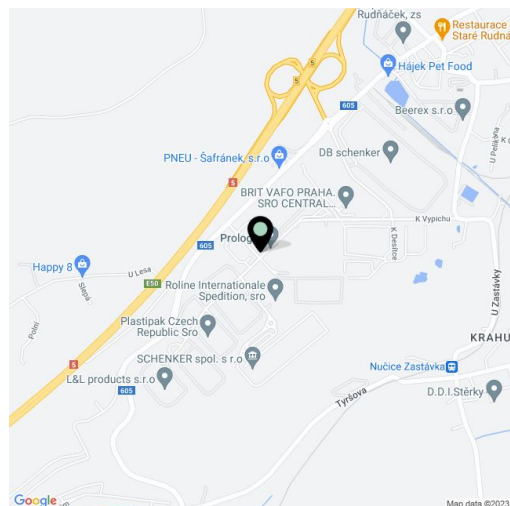
- Floor loading capacity 5 T/sq.m
- Clear height 10 m
- Loading docks 1/800 sq.m
- 33 docks
- 1 Drive-in gate
- Column grid structure 24x12 m
- Light intensity 200 Lux
- ESRF sprinkler system
- Utility connections (water, sewage, gas, electricity)

Office:

- Office space according to the client's requirements
- Air-conditioning
- Light intensity 500 Lux

Available from 2/2025.

Lessee pays no commission.





Industrial space

14 943 m², Praha-západ, Rudná, Rudná

Ask for price

