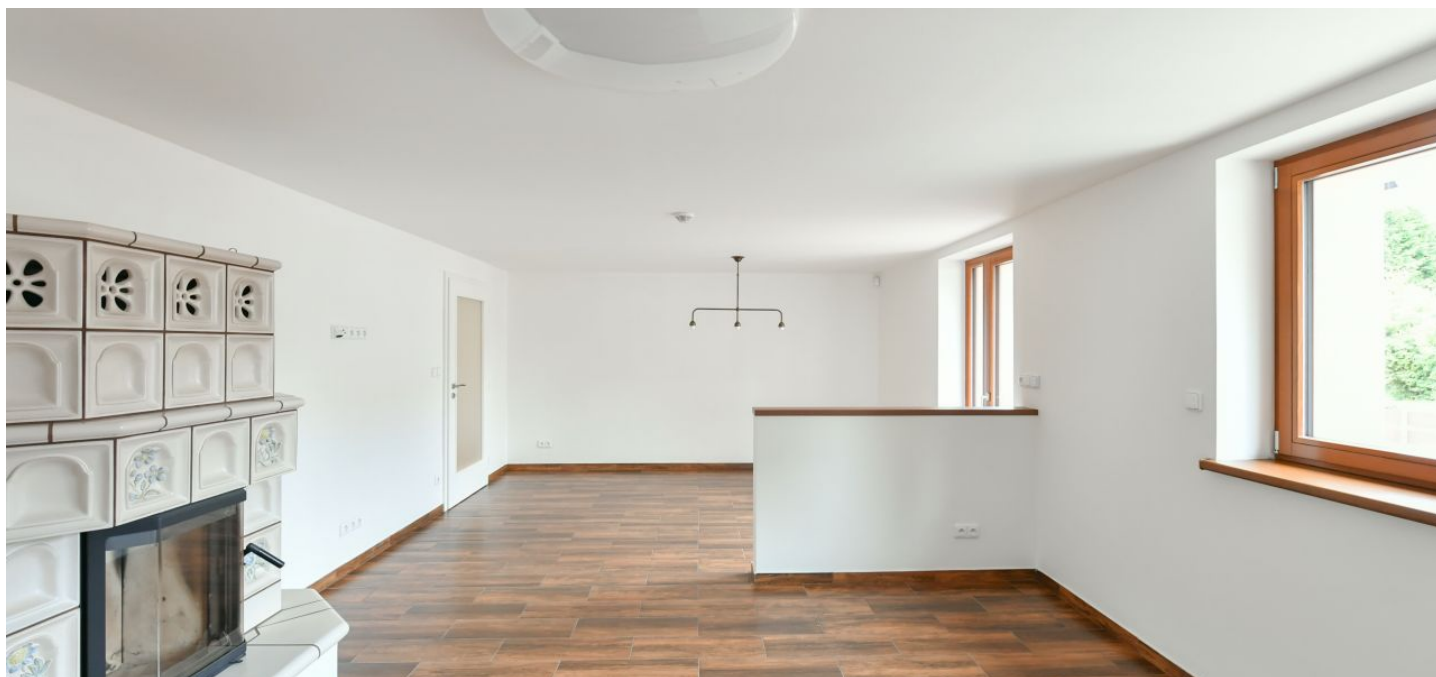




House Five-bedroom (6+1)

Rented

281 m², Prague 6, Suchdol, Návazná





House Five-bedroom (6+1)

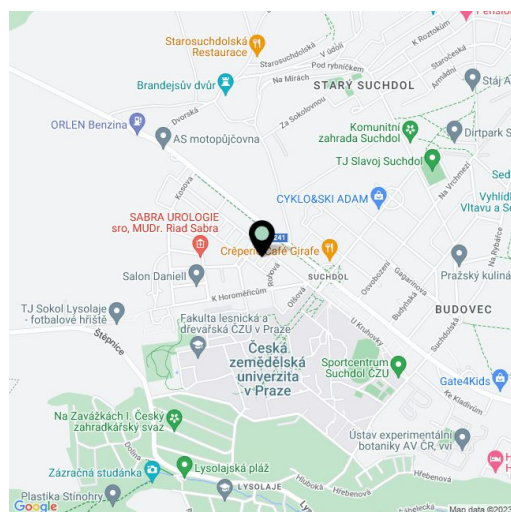
Rented281 m², Prague 6, Suchdol, Návazná

Usable area	281 m ²
Plot	367 m ²
Foot print	141 m ²
Garden	226 m ²
Floor area	258 m ²
Terrace	23 m ²
Parking	Garage parking for two cars.
Garage	Yes
Cellar	-
PENB	G
Reference number	39367
Available from	Immediately

This unfurnished 5-bedroom 3-bathroom family house (half of a semi-detached house) is located in a quiet residential area in Prague 6. Location with regular bus connections to the Dejvická metro station, close to the ČZU (Czech University of Life Sciences) University campus and a few minute drive to Tiché údolí protected area. Convenient to the ISP and Riverside School international schools, and the airport. The area offers good amenities incl. a supermarket within walking distance.

On the ground floor offers a living room with dining area, tiled stove and access to the **garden terrace**, fully equipped kitchen with pantry, separate toilet and hallway. On the 1st floor there are two bedrooms with shared bathroom (bath, shower, toilet) and **two walk-in closets**. 2nd floor with **balcony** consists of two bedrooms with a walk-through study and a bathroom. The basement contains a **sauna, fitness**, shower, laundry, cellar and boiler room.

Air conditioning on the 1st and 2nd floor, wooden floating floors, tiles, built-in wardrobes, **underfloor heating**, gas boiler, dishwasher, Electrolux appliances. **Garage for 2 cars** with storage space, gates are remote controlled. Water and waste collection charges CZK 3,000/month. Gas and electricity will be transferred to the tenant.

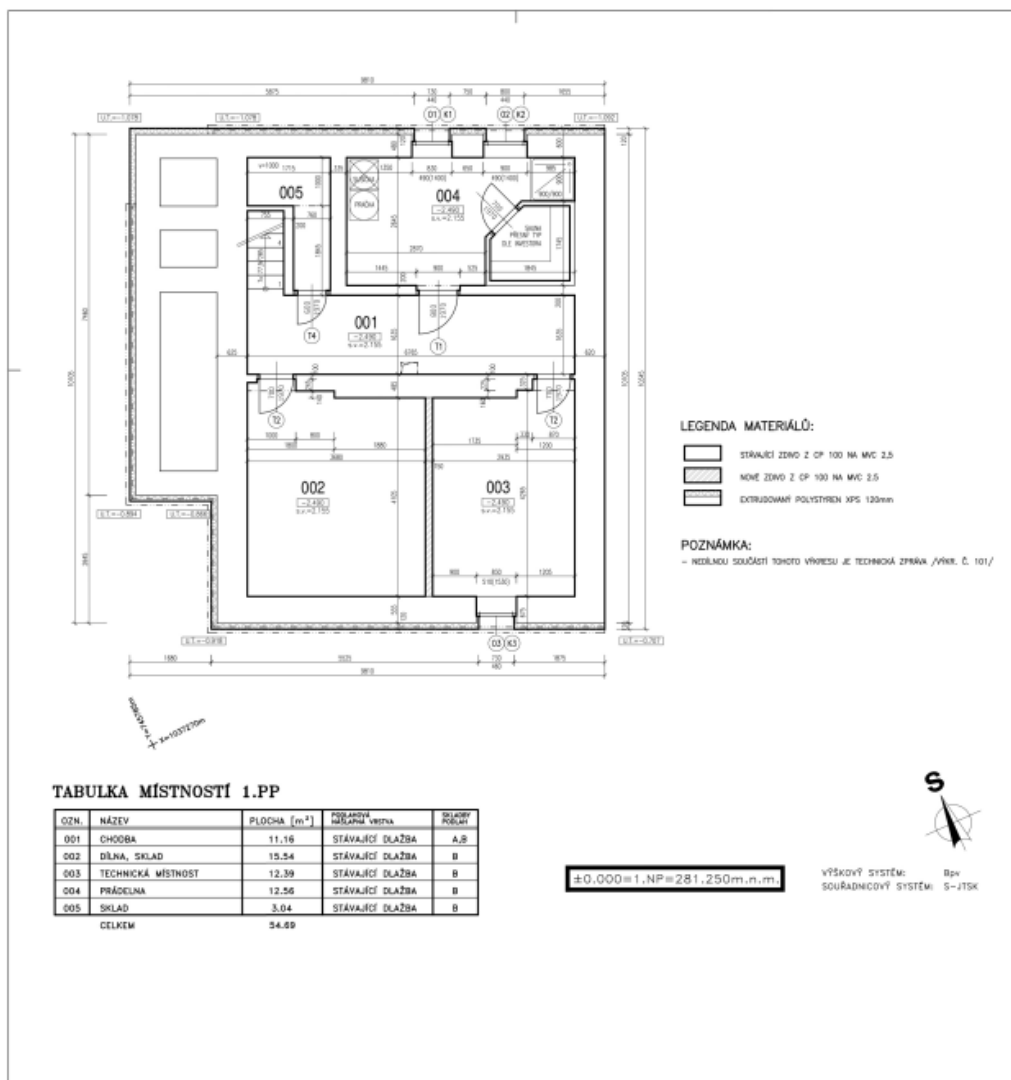




House Five-bedroom (6+1)

281 m², Prague 6, Suchdol, Návazná

Rented

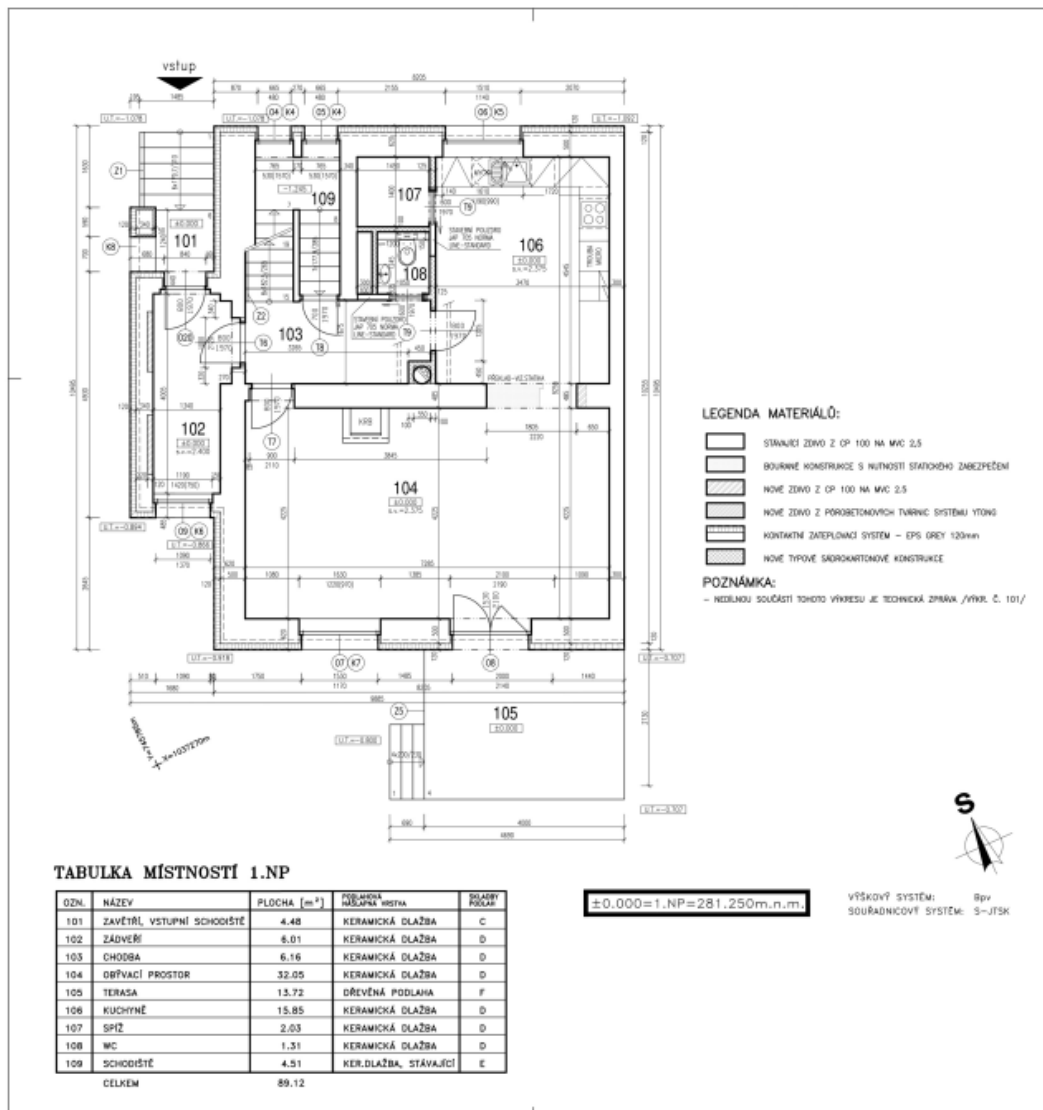




House Five-bedroom (6+1)

281 m², Prague 6, Suchdol, Návazná

Rented

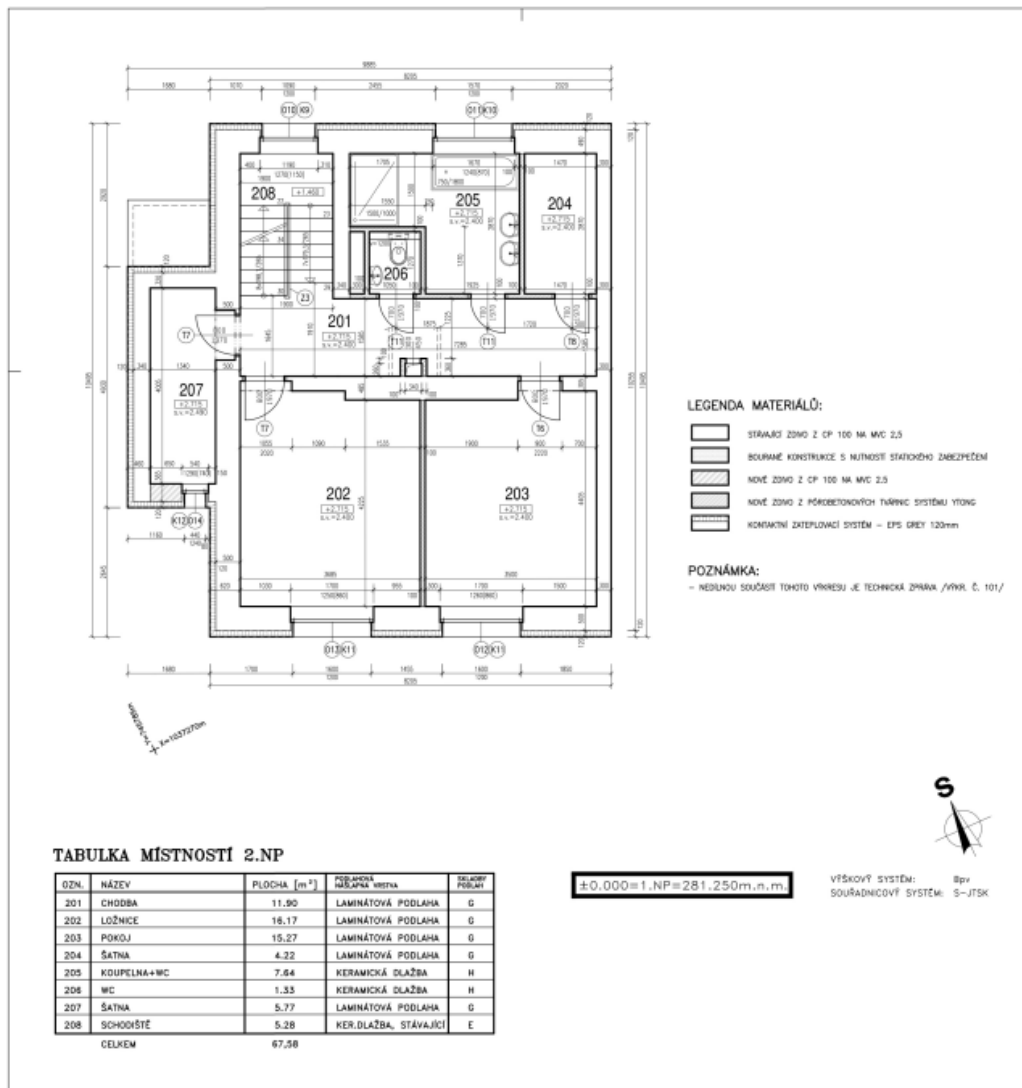




House Five-bedroom (6+1)

281 m², Prague 6, Suchdol, Návazná

Rented





House Five-bedroom (6+1)

281 m², Prague 6, Suchdol, Návazná

Rented

