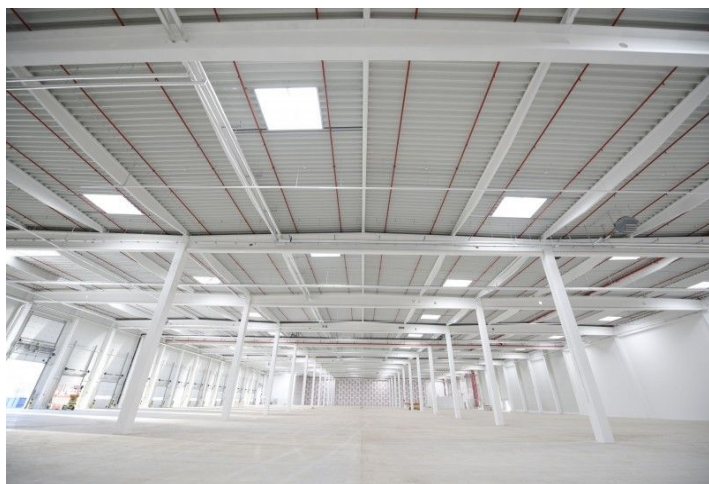




Warehouse space

15 992 m², Ostrava-město, Ostrava, Halasova

Ask for price





Warehouse space

15 992 m², Ostrava-město, Ostrava, Halasova

[Ask for price](#)

Total area	15 992 m ²
Available area for rent	15 992 m ²
Ceiling height	10 m
Floor loading capacity	5 t/m ²
Column grid structure	—
Structure	Reinforced concrete structure
PENB	B
Reference number	39394

15,992 sq.m. of warehouse and office space incl. background for lease in an area located in Ostrava - Vítkovice. After a demanding rehabilitation, the 44ha brownfield is ready for the construction of a modern commercial-industrial park. The tenants of the park have at their disposal premises of various sizes suitable for companies operating in a wide range of commercial and production act.

Location:

The park is located in the wider center of Ostrava in the area of Ostrava Vítkovice with excellent transport accessibility. Direct connection to the highway leading to Brno and Poland. There are 3 entrances to the park. There is a tram stop near the complex.

Features and Services:

- All infrastructure available on site
- High standards of buildings
- A functional railway along the eastern perimeter of the compound
- A large number of parking spaces for cars and trucks

Industrial/Warehouse space:

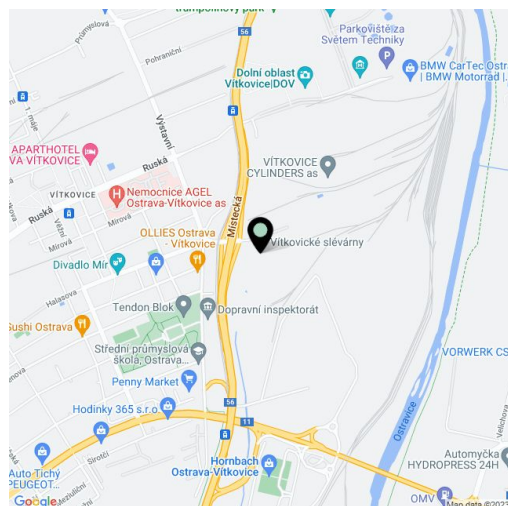
- Flexible unit layouts
- Variable units from 1,500 sq.m.
- 4 drive-ins
- 32 docks with loading bridge
- Floor load: 5t/sq.m.
- Clear height of storage areas: 10-12 m
- Column module: 24×12 m
- Loading yard: 35 m
- Sprinklersystem
- Infrared emitters /ceiling heating units
- BREEAM Very Good

Office:

- Flexible office layout
- Air-conditioning

Available from Q4/2024.

Rental and service charges listed without VAT. Lessee pays no commission.





Warehouse space

15 992 m², Ostrava-město, Ostrava, Halasova[Ask for price](#)

Budova	Zastavěná plocha m ²
L1	28 516
L2	29 524
L3	16 438
M1	10 516
M2	14 884
M3	14 884
M4	10 516
S1	3844
S2	7564
S3	4180
S4	4180
S5	4180
XSI	1444
XSI	1444
XSI	1444
Celkem	152 114