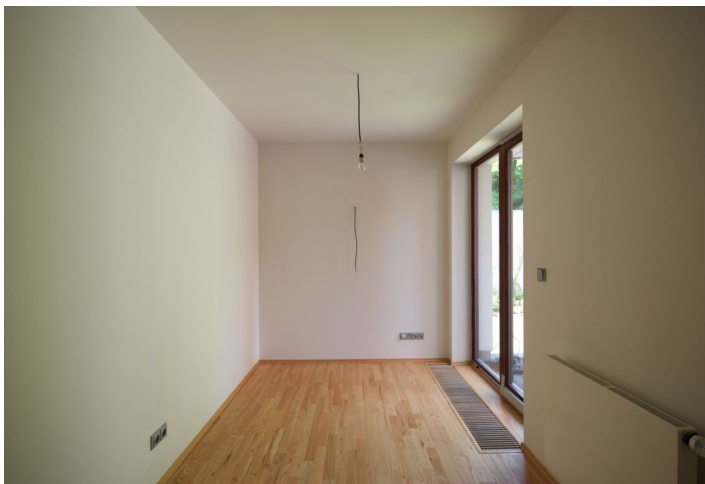




Apartment Three-bedroom (4+kk)

Rented

110 m², Praha 6, Střešovice, Pod bateriemi





Apartment Three-bedroom (4+kk)

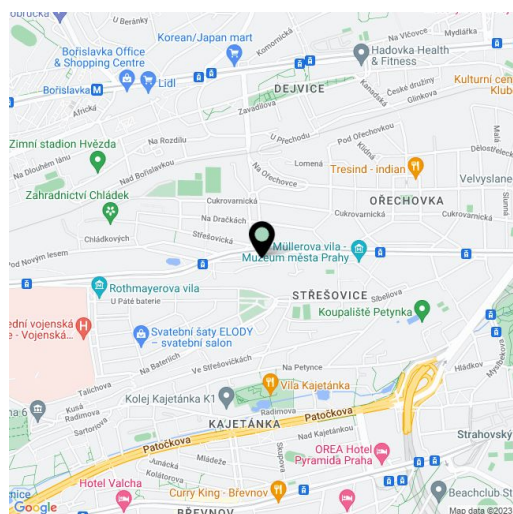
Rented110 m², Praha 6, Střešovice, Pod bateriemi

Total area	110 m ²
Parking	On site garage parking space included.
Cellar	Yes
PENB	G
Reference number	3946
Available from	Immediately

Newly built 3-bedroom flat with a 43 m² south facing terrace and garden access, currently available for rent. Located in a modern three story residential project with lift and surveillance camera system in a charming residential neighborhood next to a park, and with an impressive rock wall behind the building.

There is living room with fully fitted kitchen, fireplace and terrace access, 3 bedrooms, full bathroom, and extra toilet. The terrace is also accessible from the hall and one of the bedrooms.

Wood floors, French windows, independent heating, video entry phone, alarm that can be connected to a security agency, security door, basement storage. Moments from a tram stop, 5 stops to metro stations Hradčanská or Dejvická. Just a 15 minute walk to the Prague Castle. Convenient to the international schools in Prague 5 and 6 (15 min. to the ISP school). Common building charges and utilities approx. CZK 5000/month.



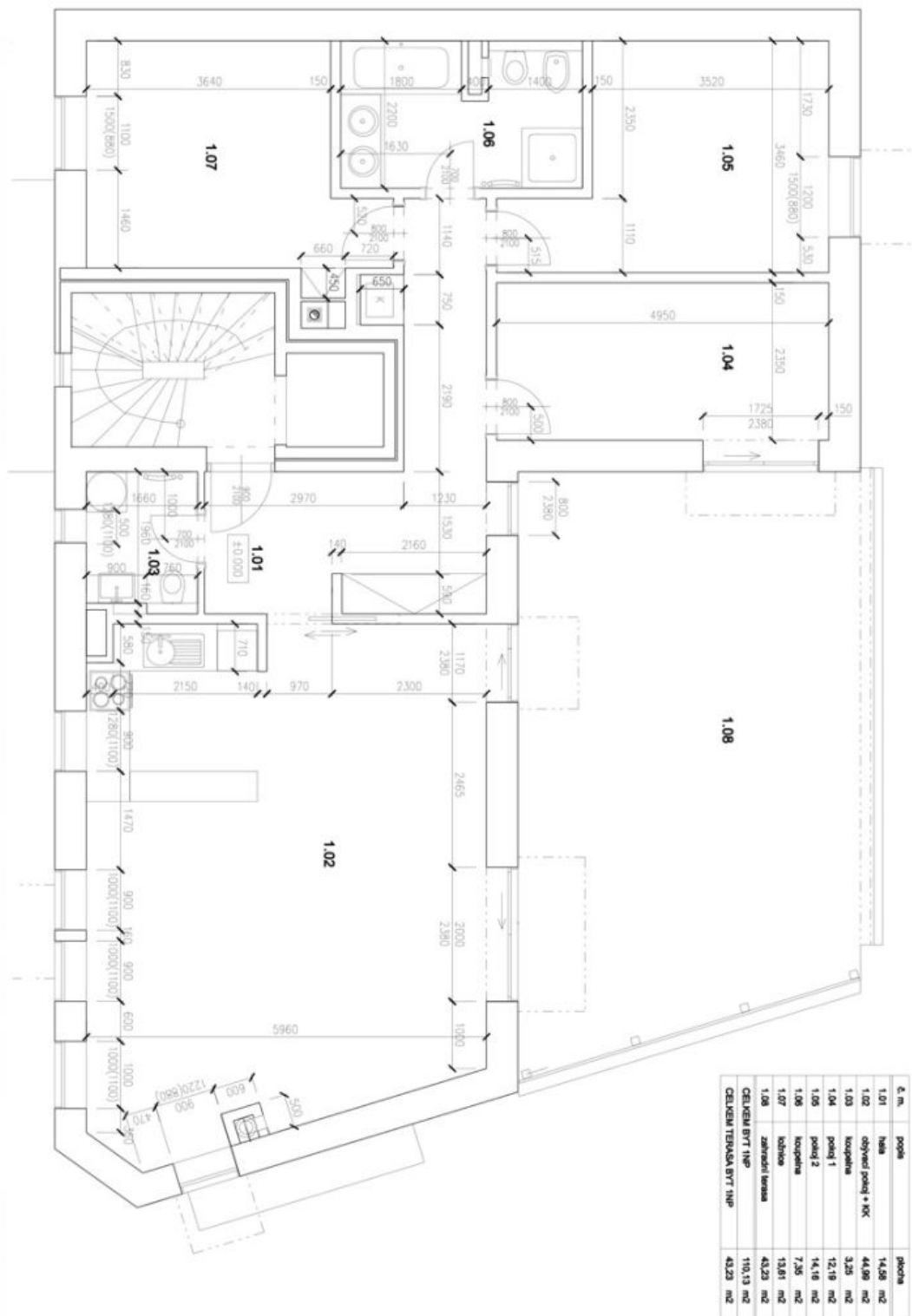
* Area of the unit according to the Civil Code. The area consists of the sum total area of the entire unit bounded by perimeter walls.



Apartment Three-bedroom (4+kk)

Rented

110 m², Praha 6, Střešovice, Pod bateriemi



LEGENDA MÍSTNOSTÍ

č. m.	popis	plocha
1.01	hala	14,48 m ²
1.02	obývací pokoj + KX	44,89 m ²
1.03	kuchyně	3,25 m ²
1.04	pokoj 1	12,19 m ²
1.05	pokoj 2	14,16 m ²
1.06	ložnice	7,35 m ²
1.07	ložnice	13,61 m ²
1.08	zobavení	43,23 m ²
CELKEM BYT NMP		110,13 m ²
CELKEM TERASA BYT NMP		43,23 m ²