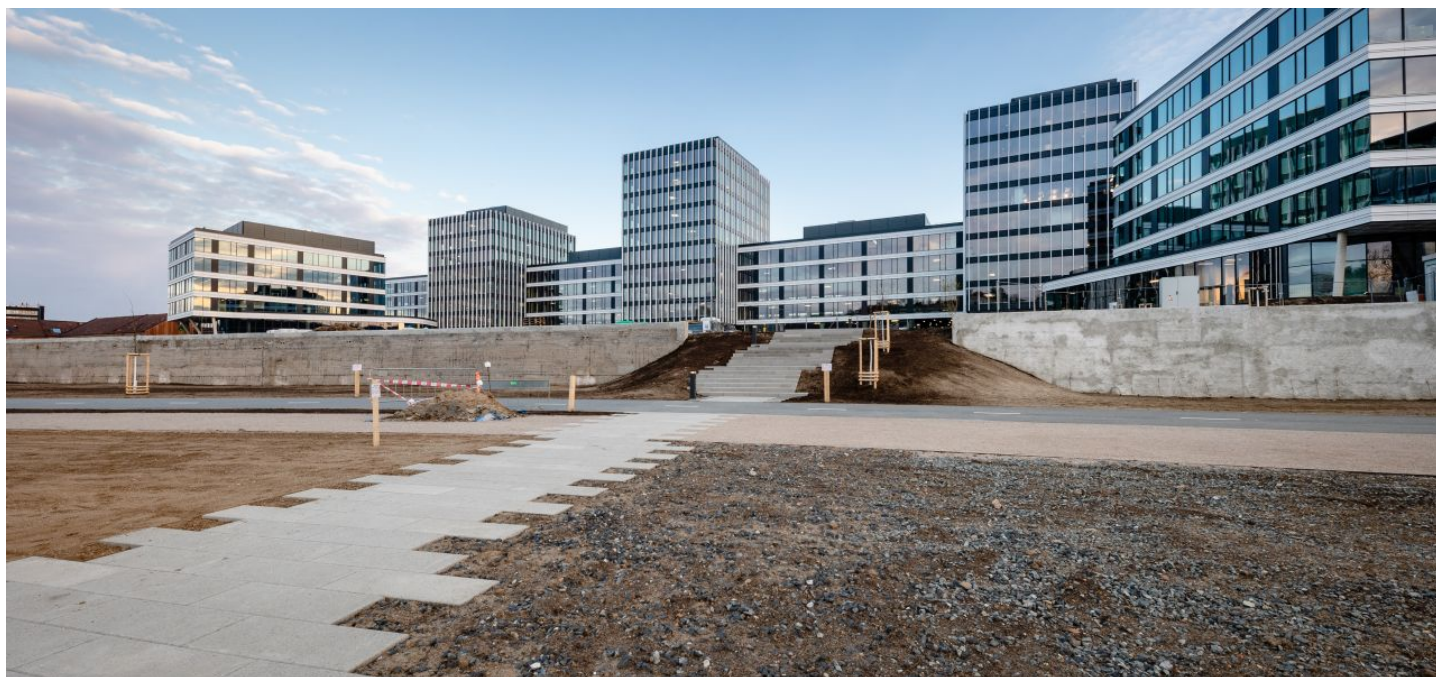




## Office space

Prague 7, Holešovice, Partyzánská

Rented





Prague 7, Holešovice, Partyzánská

Service price	153 CZK monthly per m <sup>2</sup>
Available area	580 m <sup>2</sup>
Cellar	-
Parking	Yes
PENB	B
Reference number	39520

Office space for lease on the 6th floor in the complex built in campus style. It will be located in Prague 7 - Holešovice, close to the Vltava River.

This popular administrative and residential district is characterized by a wide range of services and a rich cultural life. Here you will find a variety of quality restaurants and cafes, shops, as well as health facilities and banks.

Tenants will be able to use all the services in and around the building using a special mobile application. There will be also a bicycle storage room, cloakrooms, shower and a full-day restaurant. The surroundings of the buildings will turn into a number of green areas with the possibility of sports activities and relaxation zones. There is also a cycle path for cyclists and skaters. Campus will include a harbor for motor boats and small boats.

#### Location:

Excellent transport accessibility by car and by public transport - in the immediate vicinity of the building there are bus and tram stops. Near train station and Nádraží Holešovice metro station (line C) and Palmovka station (line B). Easy connection to the city ring road, the D8 motorway and the city center.

#### Facilities and services:

Targeting on LEED Platinum and WELL Gold certifications

24/7 security service

Access to magnetic cards

Terrace on the roof of the building

Air conditioning

Sufficient daylight

Low ceilings

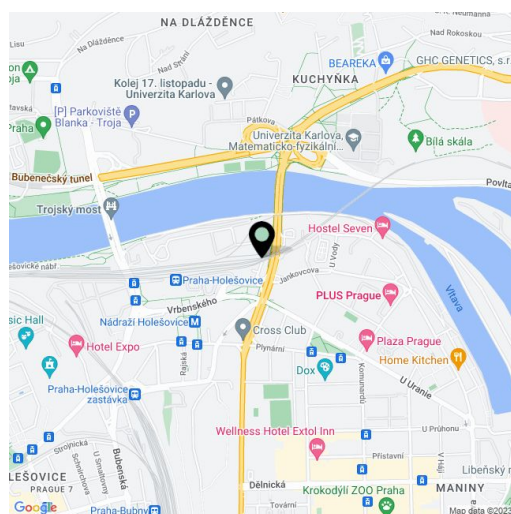
Double floors

Storage areas, showers and dressing rooms

A restaurant right in the building

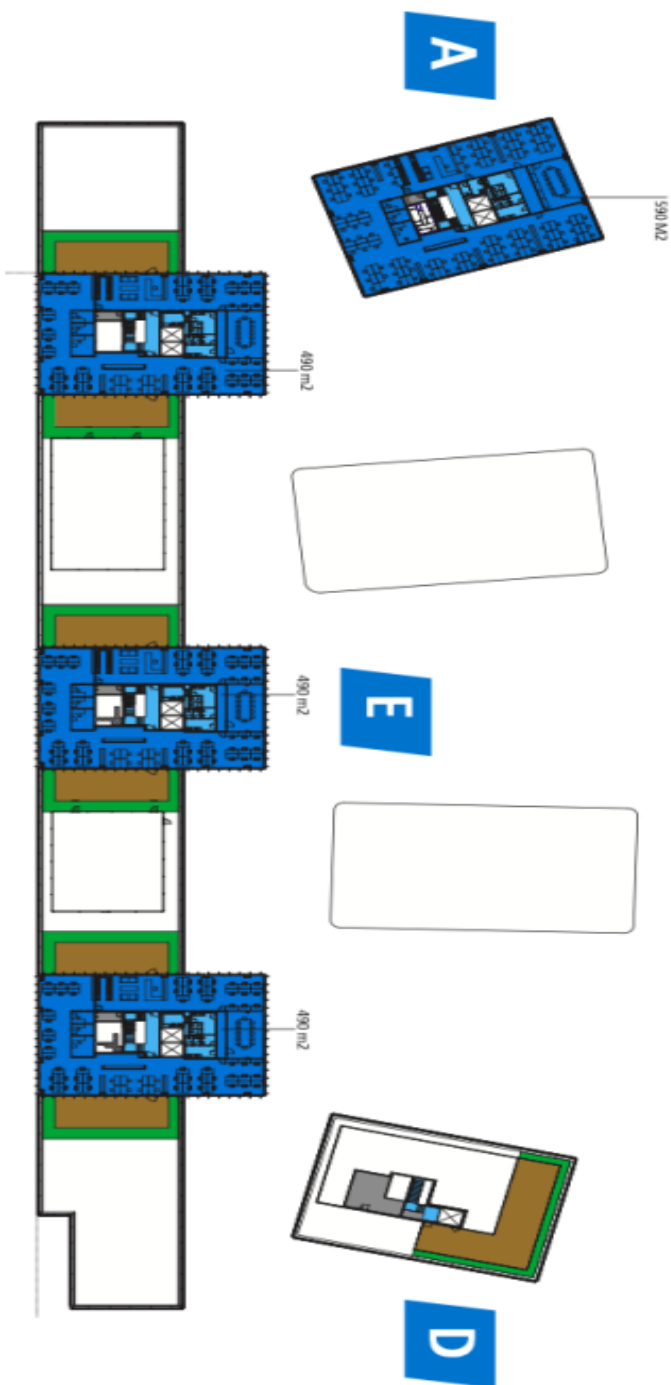
Parking in underground garages Rents and fees are listed without VAT.

Tenants do not pay commission.





# 6NP



# 2NP - 5NP

