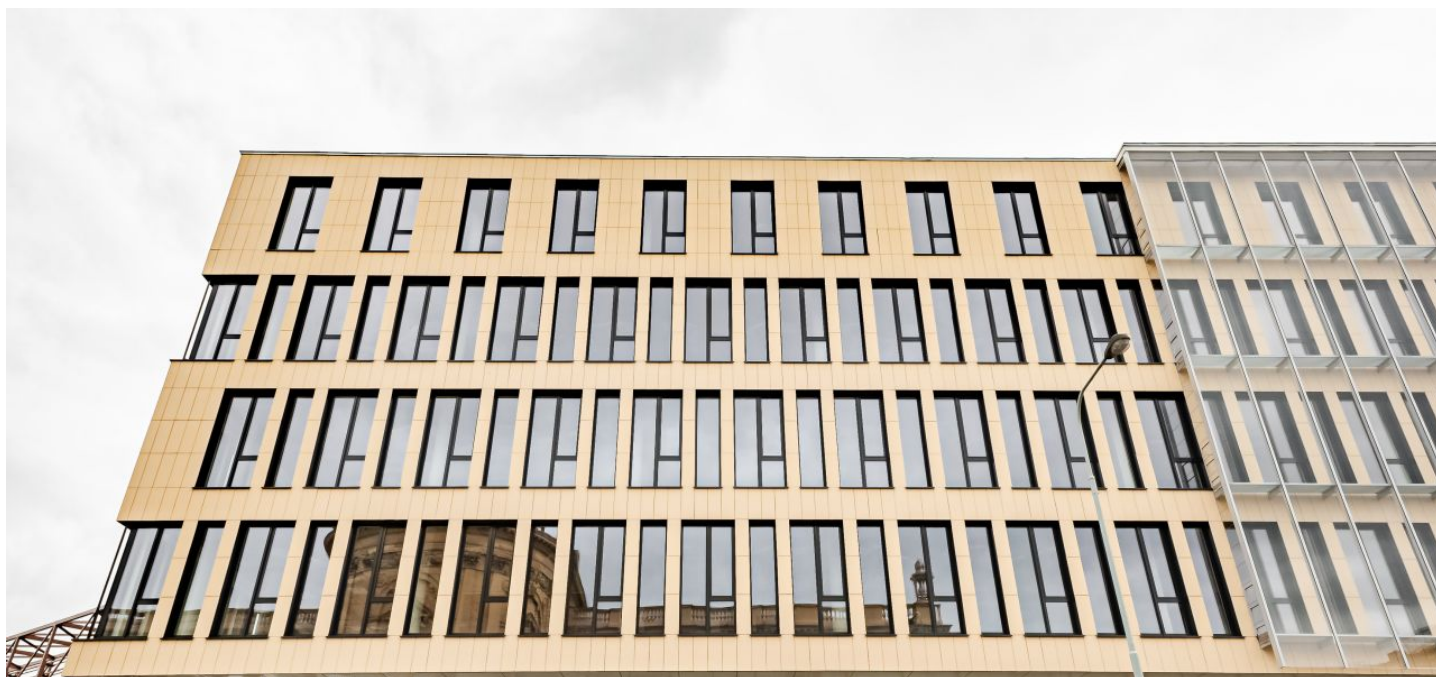




Office space

Prague 8, Karlín, Křižíkova

Rented



**Office space****Rented**

Prague 8, Karlín, Křižíkova

| | |
|-------------------------|------------------------------------|
| Service price | 125 CZK monthly per m ² |
| Available area | 767 m ² |
| Cellar | - |
| Parking | EUR 250 / pp / month |
| PENB | B |
| Reference number | 39540 |

First-class office space for lease on the 4th floor in a new building with excellent transport accessibility near the Karlín Music Theater and the Museum of the Capital City of Prague. A shopping gallery, terrace, underground parking, and cultivated places to meet and relax are available in the building.

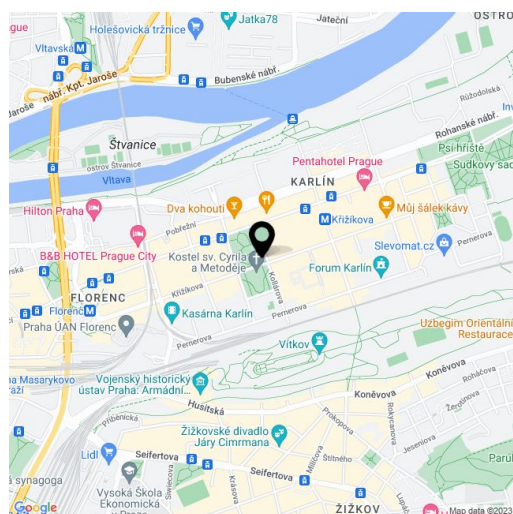
Location:

Excellent accessibility by public transport or car. Direct access from the Florenc metro station (line B, C), Florenc bus station, and tram connections. Also nearby are the Museum of the Capital City of Prague, the Karlín Music Theater, the Negrelli Viaduct, and the Masaryk Railway Station.

Features and services:

Underground parking
Elegant reception

Rental and service charges are listed without VAT. Lessee pays no commission.

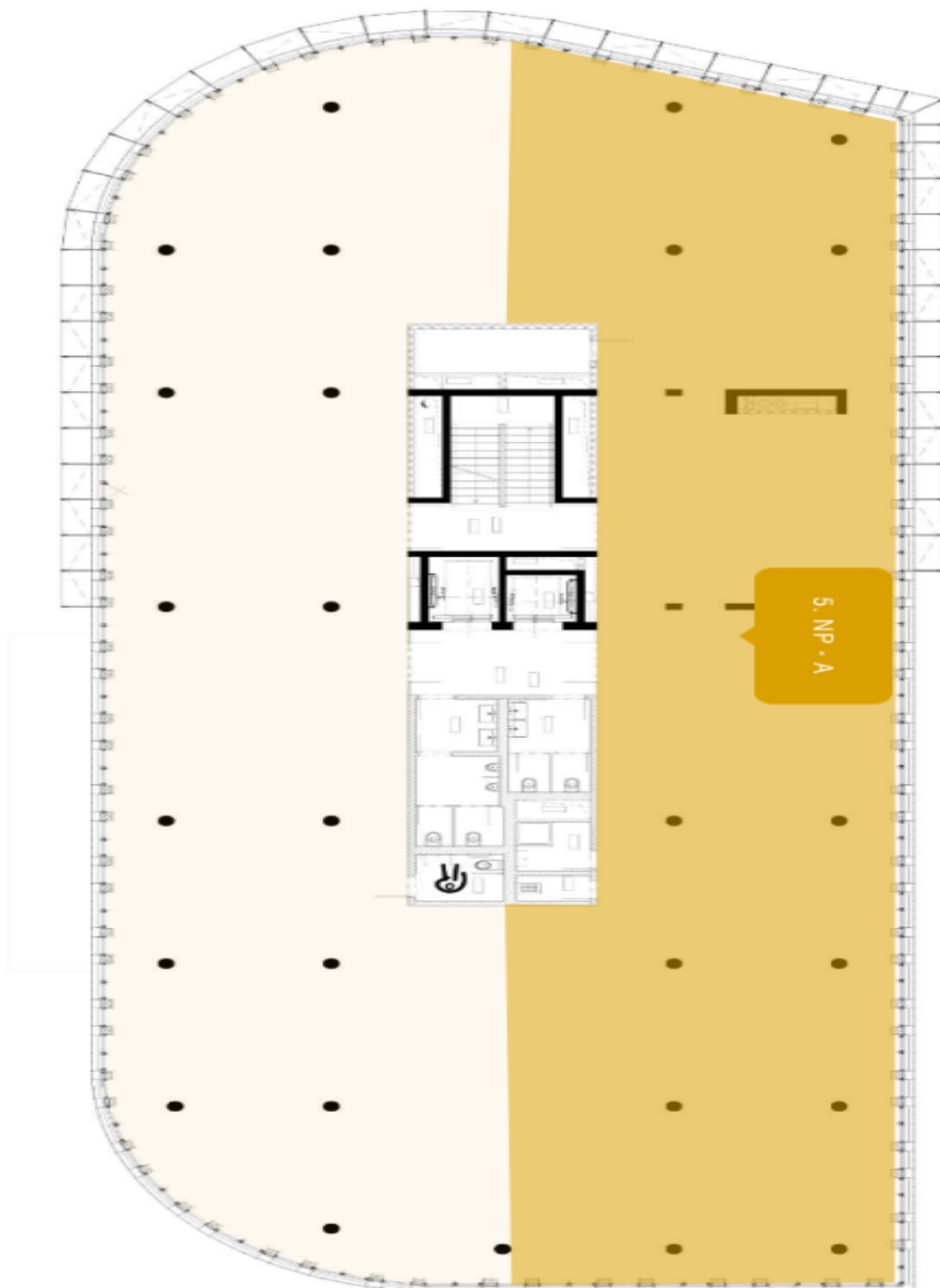




Office space

Prague 8, Karlín, Křižíkova

Rented





Office space

Prague 8, Karlín, Křížíkova

Rented

