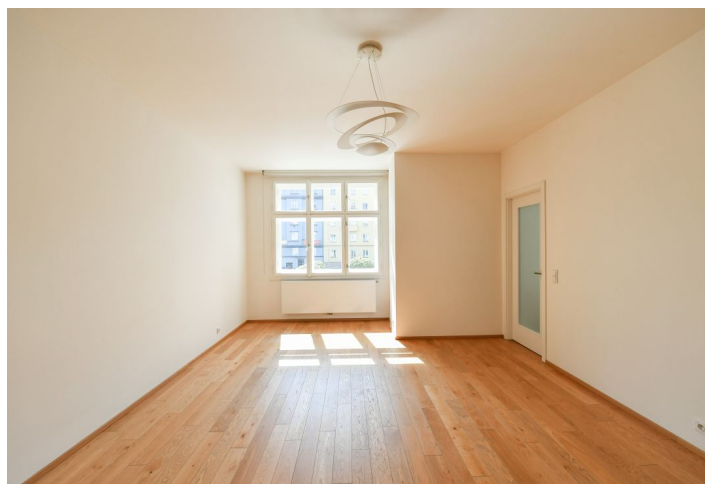




Apartment One-bedroom (2+kk)

Rented

56 m², Prague 6, Dejvice, Wucherlova





Apartment One-bedroom (2+kk)

Rented

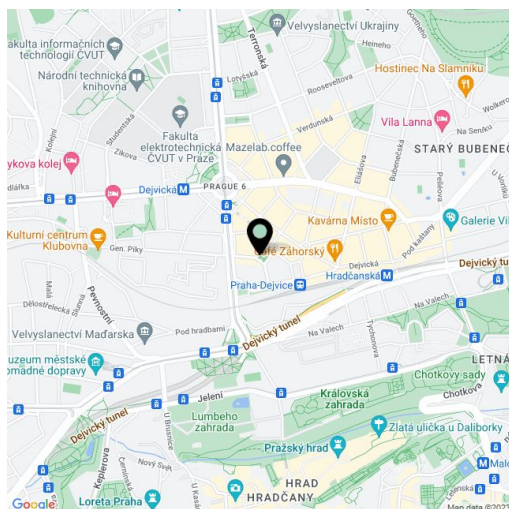
56 m², Prague 6, Dejvice, Wucherlova

Total area	59 m ²
Floor area*	56 m ²
Balcony	3 m ²
Parking	Parking in a nearby public garage.
Garage	Yes
Cellar	Yes
PENB	E
Reference number	39613
Available from	Immediately

Reconstructed 1-bedroom flat with a balcony and a view of the adjacent Czechoslovak Hussite Church, on the first floor of a completely newly refurbished 1932 corner building with lift. Located in an attractive part of Prague 6 next to a nicely landscaped square with equestrian statues, with full amenities in the area and quick access to the city center - just steps from Dejvická metro and trams. Convenient to the airport and international schools, within walking distance of the Prague Castle and Stromovka Park.

The interior features living room with a fully fitted open kitchen and views of the square, a bedroom with balcony access, shower bathroom with sink, a separate toilet with bidet shower, and a glassed entrance hall.

High ceilings, **wooden floors**, security entry door, central heating, blinds, induction cooktop, dishwasher, combination oven, video entry phone, **cellar**. Underground garage parking available in the adjacent square at approx. CZK 4000/month. Deposit for common building charges, water and heating around CZK 3000/month. Electricity is billed separately.



* Area of the unit according to the Civil Code. The area consists of the sum total area of the entire unit bounded by perimeter walls.



Apartment One-bedroom (2+kk)

Rented

56 m², Prague 6, Dejvice, Wuchterlova

