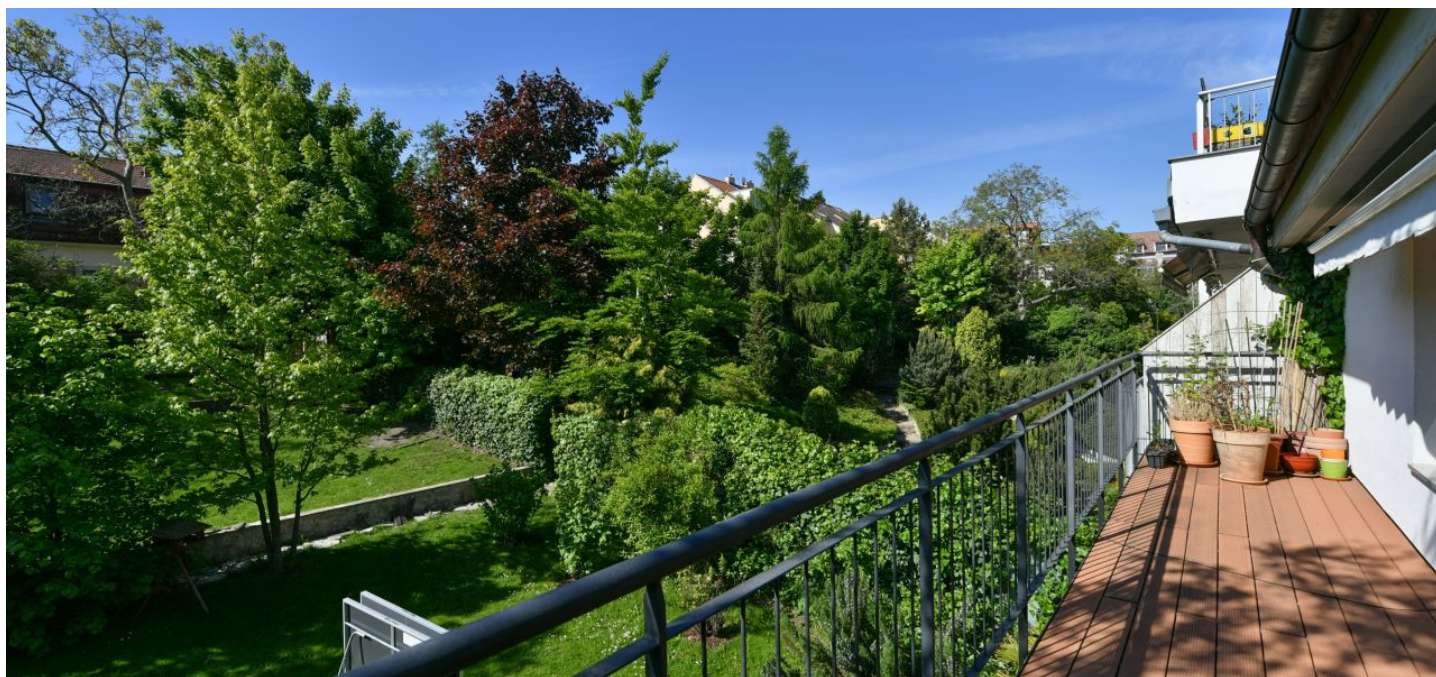




Apartment Five-bedroom (6+kk)

Rented

228 m², Prague 6, Břevnov, Šlikova





Apartment Five-bedroom (6+kk)

Rented

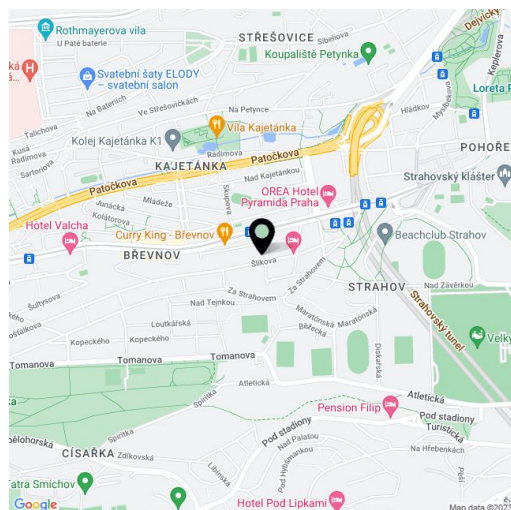
228 m², Prague 6, Břevnov, Šlikova

Total area	252 m ²
Floor area*	228 m ²
Balcony	11 m ²
Terrace	24 m ²
Parking	Garage parking.
Garage	Yes
Cellar	Yes
PENB	G
Reference number	39615
Available from	Immediately

Duplex 5-bedroom 2-bathroom flat with garage parking, ideal for family living, is located in a historic villa with a large shared garden and wine cellar. Attractive location of Prague 6 - Břevnov within walking distance of Prague Castle, the Velká Strahovská zahrada Garden and Petřínské sady Park, in a place with all services, many schools, including a private elementary school or the prestigious grammar school J. Kepler. Convenient access to the center and the airport.

On the ground floor there is an entrance hall and a staircase, on the 1st floor there is a living room with an equipped kitchen and access to the **terrace** and the **garden**, 2 bedrooms, bathroom with shower and toilet, walk-in closet and an entrance hall. The 2nd floor consists of a quiet zone containing a master bedroom with a **balcony**, another 2 bedrooms, 2 fitted walk-in closets, a hall and a bathroom with a bathtub and a toilet.

Completely renovated house from the early 20th century. **Air-conditioning** in the master bedroom, washer, dryer, dishwasher, microwave oven, built-in wardrobes, central heating from the boiler room, security system, cellar, **shared garden of about 800 m²** with trampoline and playground, common wine cellar. **Two garage spaces** available for CZK 2500/space/month. Deposit for common building charges, energies, internet, security system and garden maintenance CZK 10,000/month. The apartment will be fitted with **new wooden floors, kitchen tiles and enlarged terrace**. Available from September 2021 or earlier based on agreement.



* Area of the unit according to the Civil Code. The area consists of the sum total area of the entire unit bounded by perimeter walls.

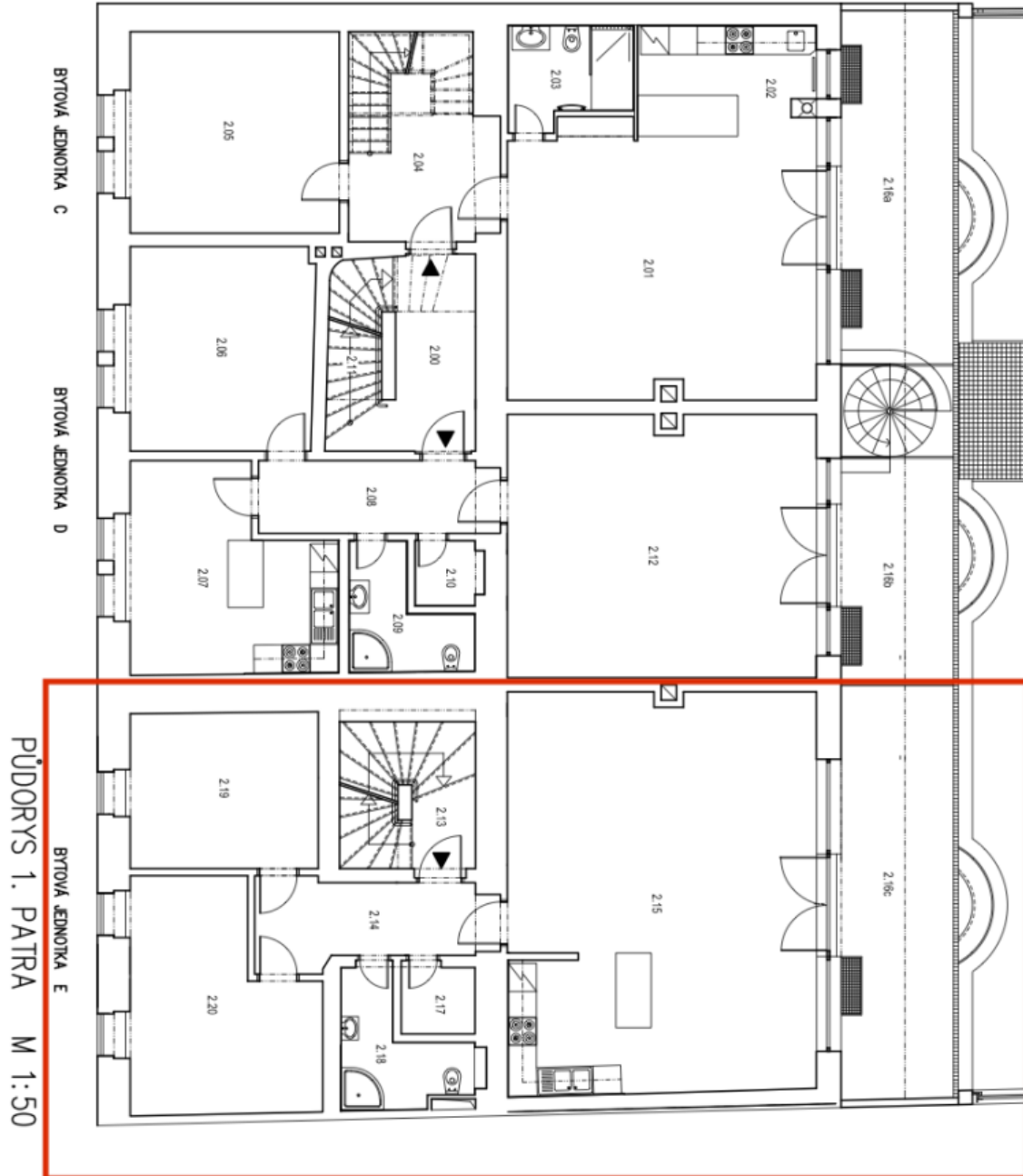


Apartment Five-bedroom (6+kk)

Rented

228 m², Prague 6, Břevnov, Šlikova

TABUĽKA MIERNOSTÍ	
ČÍSLO MIERY	m ²
BYTOVÉ JEDNOTKY APO BYTOVÉ JEDNOTKY	
210	7,05
BYTOVÁ JEDNOTKA C	
212	48,38
210	42,21
210	5,35
210	14,41
210	19,34
210	18,28
BYTOVÁ JEDNOTKA D	
210	11,21
210	11,28
210	8,47
210	5,25
210	1,95
210	5,41
210	5,43
210	11,25
BYTOVÁ JEDNOTKA E	
210	8,04
210	8,06
210	5,54
210	2,38
210	5,80
210	11,56
210	21,34





Apartment Five-bedroom (6+kk)

228 m², Prague 6, Břevnov, Šlikova

Rented

