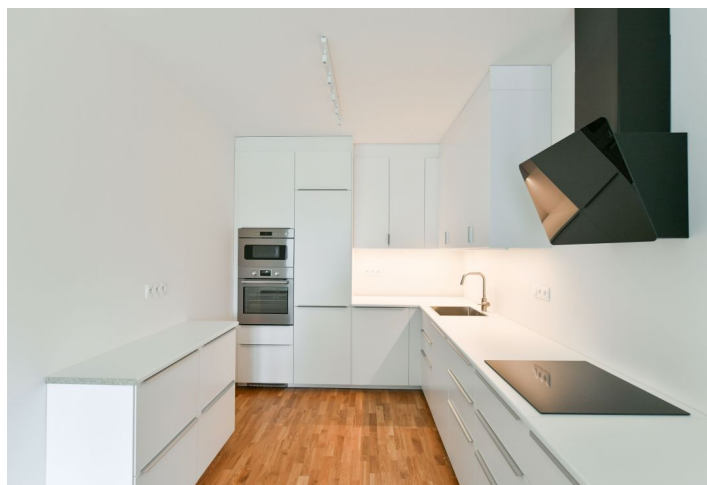




Apartment Three-bedroom (4+kk)

€ 1 783 | CZK 45 000

97 m², Prague 8, Karlín, Breitfeldova





Apartment Three-bedroom (4+kk)

€ 1 783 | CZK 45 000

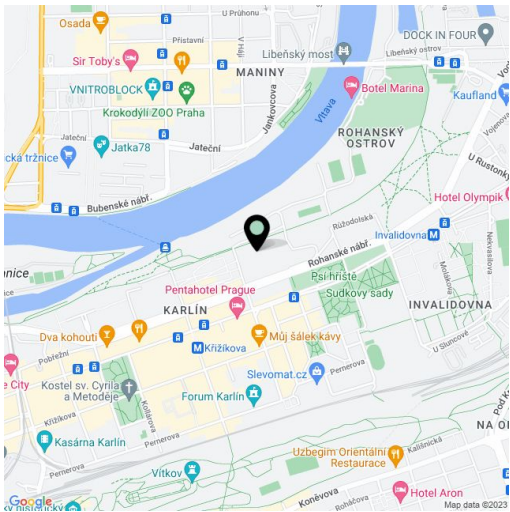
97 m², Prague 8, Karlín, Breitfeldova

Total area	106 m²
Floor area*	97 m²
Loggia	9 m²
Parking	Garage parking available at an extra charge.
Garage	Yes
Cellar	Yes
Service price	Deposit for common building charges, water, and heating CZK 6,818/month, electricity is billed separately.
PENB	B
Reference number	39648
Available from	01.06.2024

Unfurnished apartment with a loggia and views of landscaped greenery and the possibility of renting a garage is on the 4th floor of the modern Porta Karolina residential complex located in the popular lively district of Karlín on the gradually revitalized Rohan Island. Within easy reach of the center by metro, tram, but also on foot, by bike, or scooter, close to bistros, cafes and restaurants, supermarkets, schools of all levels, the Karlín Forum, and landscaped parks, directly by the bike path and ferry to Holešovice.

The practical layout of the apartment consists of a living room with a fully equipped kitchenette and loggia, a master bedroom, two smaller bedrooms, a bathroom with a bathtub and two sinks, a separate toilet, a spacious entrance hall, and a utility room with a washer and dryer.

Wooden floors, floor-to-ceiling windows, balcony railings and tempered glass windows, dishwasher, wardrobes, central heating, cellar, the possibility of renting a garage for CZK 2,000/month. Available from June 2024.



* Area of the unit according to the Civil Code. The area consists of the sum total area of the entire unit bounded by perimeter walls.