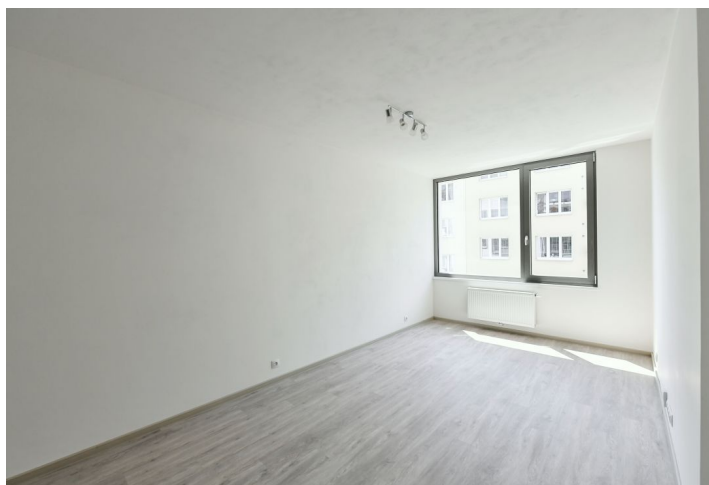




## Apartment One-bedroom (2+kk)

Rented

47.24 m<sup>2</sup>, Prague 6, Břevnov, Na Petynce





## Apartment One-bedroom (2+kk)

Rented

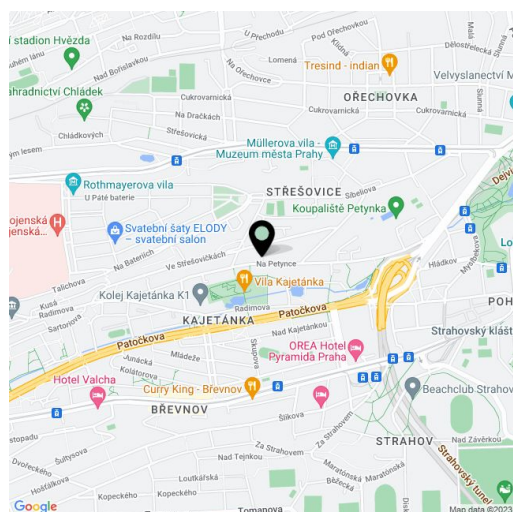
47.24 m<sup>2</sup>, Prague 6, Břevnov, Na Petynce

Total area	47 m <sup>2</sup>
Parking	Garage parking space can be rented for CZK 1500/month.
Garage	Yes
Cellar	Yes
PENB	G
Reference number	39662
Available from	Immediately

We offer for rent a new 1-bedroom flat located on the 1st floor of a new building with a large lift and underground parking. The house is located in a quiet residential area next to a supermarket, just 15 minutes walk from Prague Castle, near the Břevnov Monastery with a large garden and the popular park Ladronka or Petynka swimming pool, in a location with quick connections to the center and the airport.

The layout consists of a living room with kitchenette, bedroom, bathroom with shower and toilet and a hallway.

Vinyl floors, tiles, large aluminum windows with outdoor, el. controlled blinds, dishwasher. The unit has a cellar. Possibility to rent a garage space for 1,500 CZK / month. Common building charges, water and heating CZK 1,800/month. Electricity is billed separately.



\* Area of the unit according to the Civil Code. The area consists of the sum total area of the entire unit bounded by perimeter walls.



# Apartment One-bedroom (2+kk)

Rented

47.24 m<sup>2</sup>, Prague 6, Břevnov, Na Petynce

