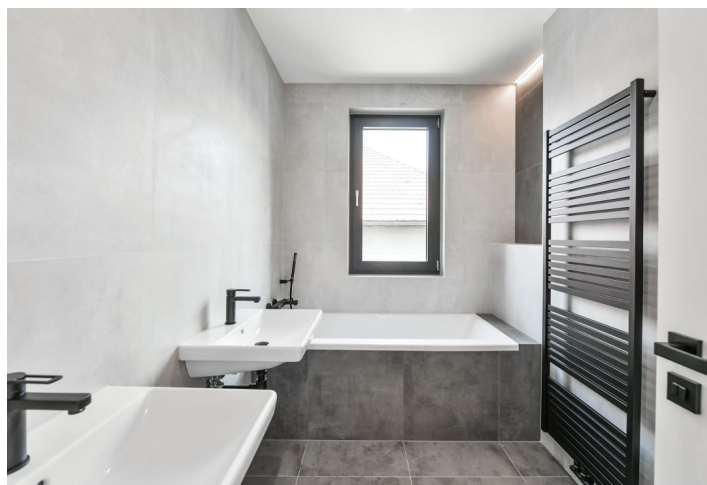
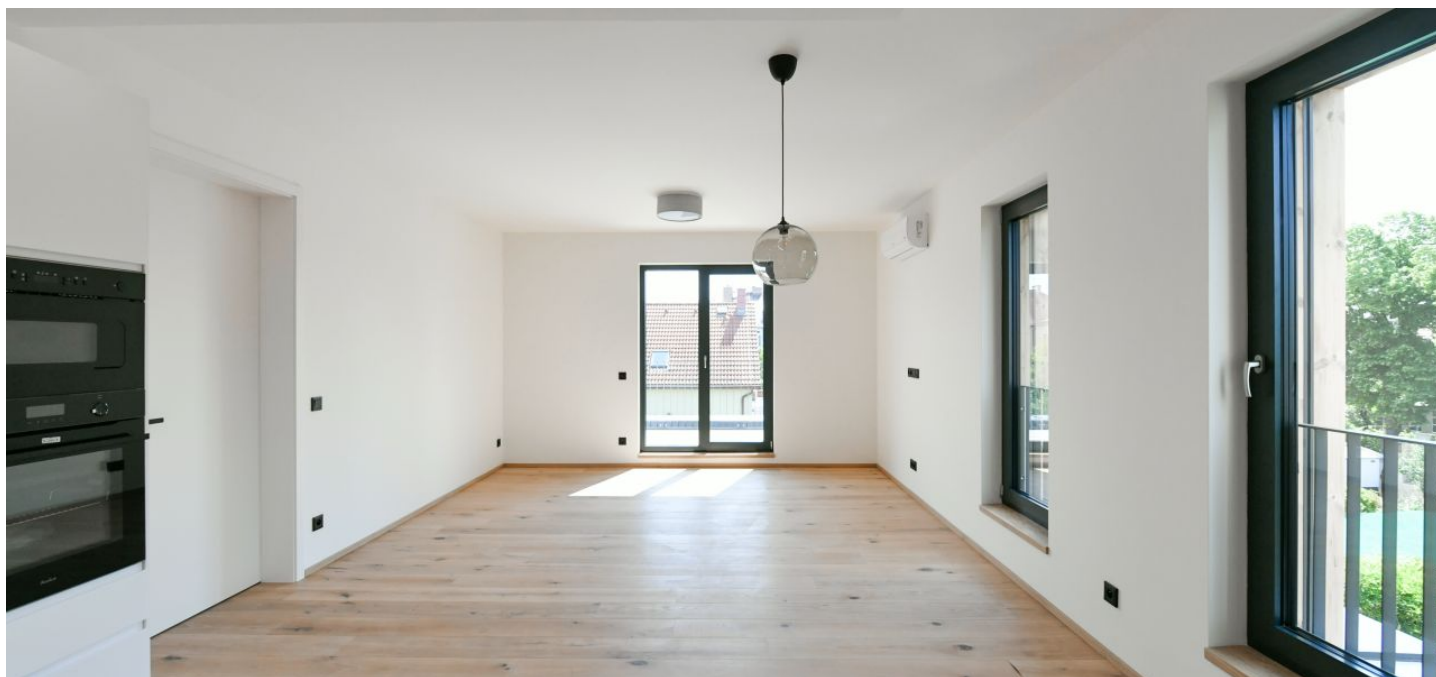




Apartment Two-bedroom (3+kk)

Rented

84 m², Prague 6, Suchdol, Kamýcká





Apartment Two-bedroom (3+kk)

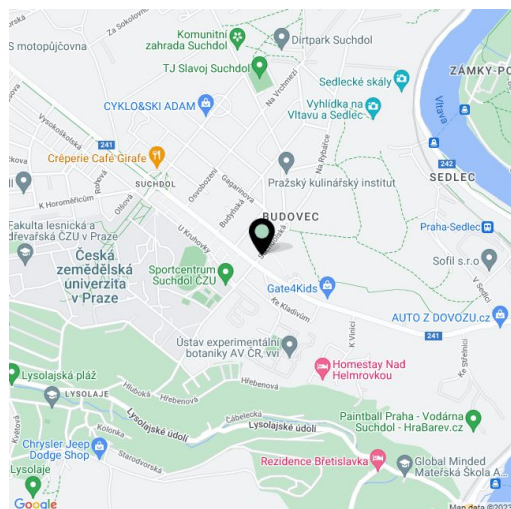
Rented84 m², Prague 6, Suchdol, Kamýcká

Total area	105 m ²
Floor area*	84 m ²
Terrace	21 m ²
Parking	Garage parking.
Garage	Yes
Cellar	Yes
PENB	G
Reference number	39695
Available from	Immediately

Boasting 2 terraces, this brand new 2-bedroom 2-bathroom apartment is situated on the second floor of a new residential building with parking in a green neighborhood in Suchdol, Prague 6. Located near a bus stop with regular connections to Dejvická metro station (approx. 10 min.), near the ČZU (Czech University of Life Sciences) University campus, and a few minute drive to Tiché údolí protected area. Conveniently located for the Riverside School, the ISP international school and the airport, and it takes about 20 min. to get to the city center. Within quick reach of local amenities and services.

The interior features a living room with a fully fitted open plan kitchen plus a bedroom with a shared **terrace** facing the quiet residential neighborhood, and a second bedroom with a **terrace** facing beyond the road. There are two bathrooms (walk-in shower, toilet / bathtub, toilet), a **walk-in closet**, and an entrance hall.

Air-conditioning, oak floors, tiles, central underfloor heating, security entry door, built-in wardrobes in both bedrooms, Villeroy & Boch bathroom fixtures, dishwasher, microwave oven, cellar. An underground **garage parking** space is included. Monthly deposit for service charges CZK 3,000. Utilities are billed separately.



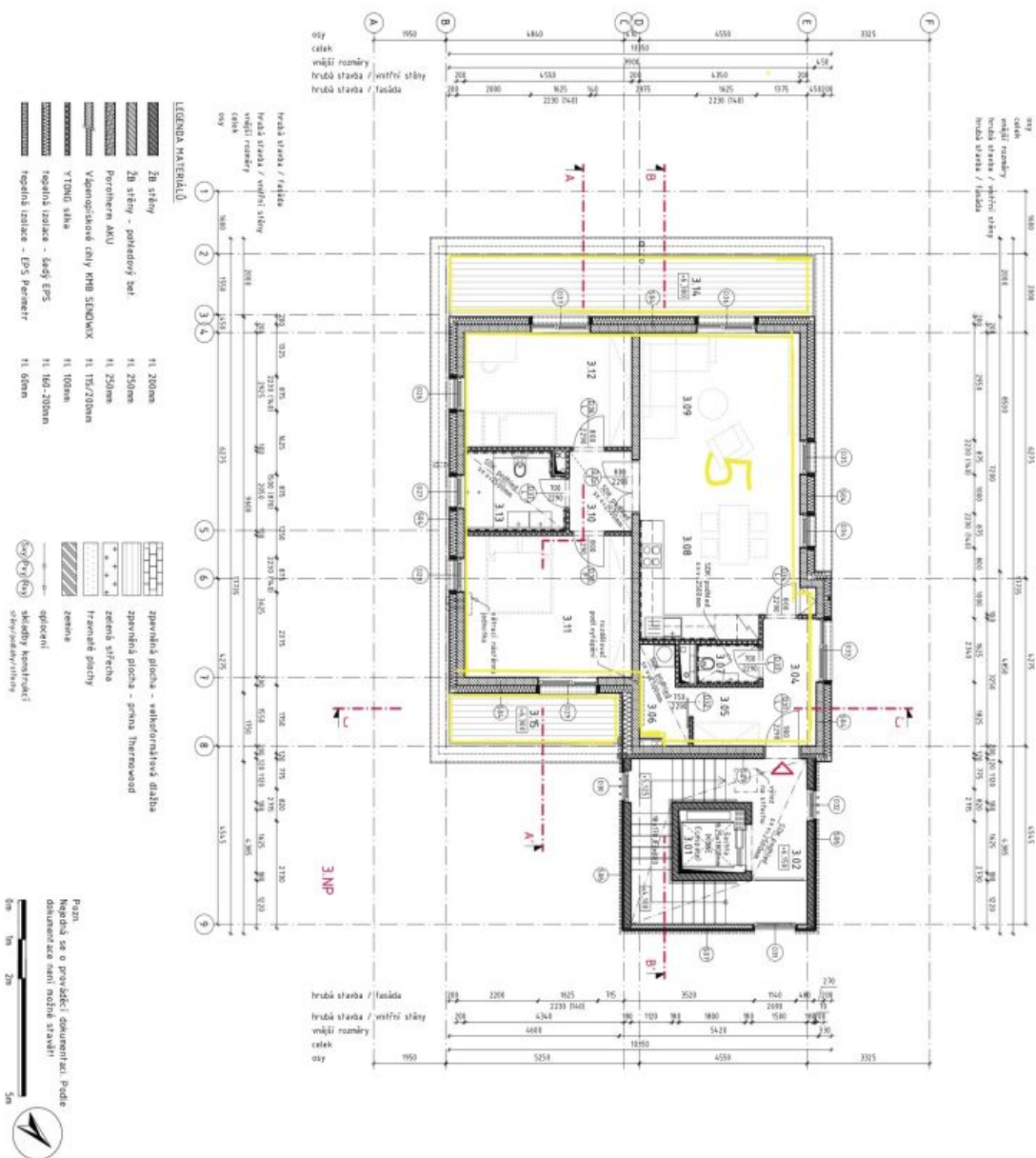
* Area of the unit according to the Civil Code. The area consists of the sum total area of the entire unit bounded by perimeter walls.



Apartment Two-bedroom (3+kk)

84 m², Prague 6, Suchbát, Kamýčká

Rented



Tabulka místností 3NP

číslo místnosti	plocha	průměr podlahy	podlahová
3.01 vstavaň	2,9 m ²	-	keramická dlažba
3.02 chodba	5,1 m ²	-	keramická dlažba
úžitná plocha společ. prostory	8,6 m ²	-	drahová podlaha
3.03 chodba	4,7 m ²	-	drahová podlaha
3.05 kůlna	2,8 m ²	-	drahová podlaha
3.06 koupelna	3,0 m ²	-	keramická dlažba
3.07 WC	1,7 m ²	-	keramická dlažba
3.08 kuchyně - Ižanův East	5,5 m ²	-	keramická dlažba
3.09 obývací pokoj	17,8 m ²	-	keramická dlažba
3.10 chodba	3,5 m ²	-	drahová podlaha
3.11 ložnice	6,5 m ²	-	drahová podlaha
3.12 ložnice	13,3 m ²	-	drahová podlaha
3.13 koupelna	4,7 m ²	-	keramická dlažba
úžitná plocha byt 3+kk	83,1 m ²	-	keramická dlažba
3.14 terasa	15,1 m ²	-	drahová podlaha
3.15 terasa	5,9 m ²	-	drahová podlaha
plocha teras byt 3+kk celkem	20,5 m ²	-	drahová podlaha
úžitná plocha 3NP celkem	102,8 m ²	-	drahová podlaha