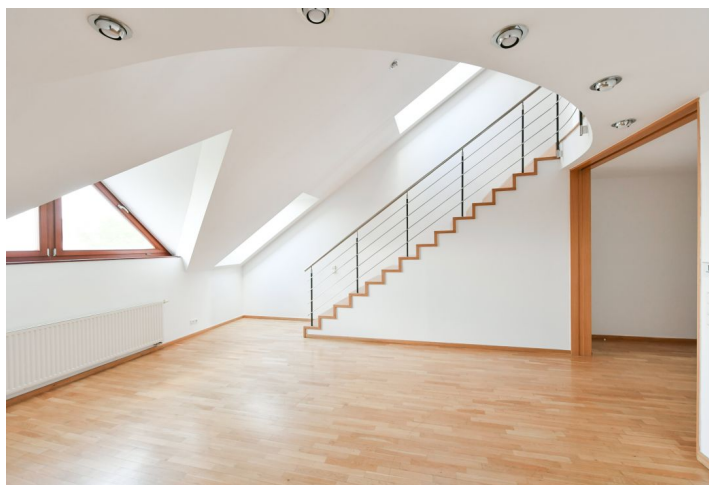
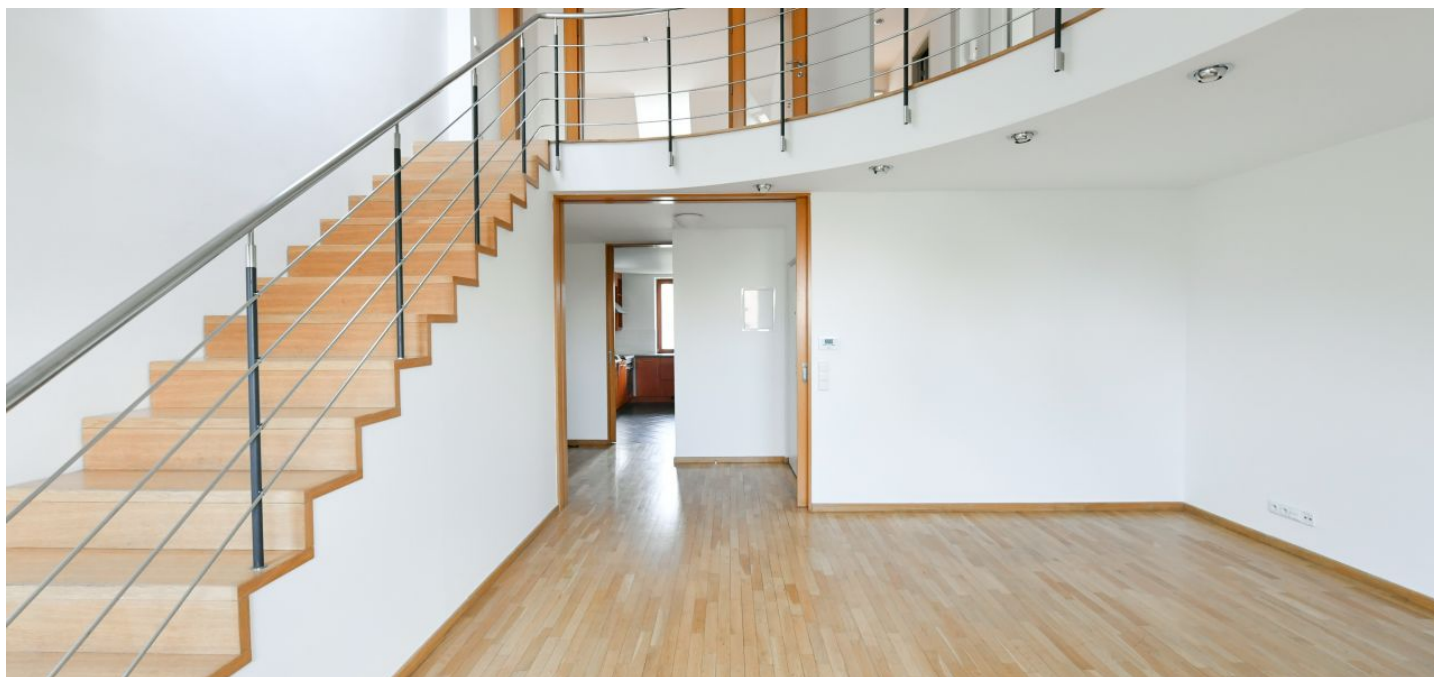




## Apartment Three-bedroom (4+1)

Rented

112 m<sup>2</sup>, Prague 10, Vinohrady, Nitranská





## Apartment Three-bedroom (4+1)

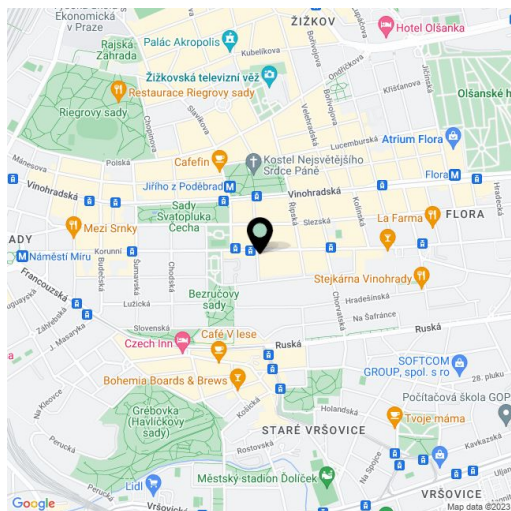
**Rented**112 m<sup>2</sup>, Prague 10, Vinohrady, Nitranská

Total area	152 m <sup>2</sup>
Floor area*	112 m <sup>2</sup>
Terrace	40 m <sup>2</sup>
Parking	-
Cellar	-
PENB	G
Reference number	39700
Available from	Immediately

Boasting a terrace, a roof terrace and panoramic views of the city, this 3-bedroom split-level attic apartment is on the fourth floor of a renovated traditional residential building with a lift and a landscaped shared courtyard garden. Conveniently located in the popular Vinohrady residential neighborhood with quick connection to the city center, just a few min. walk from Jiřího z Poděbrad metro station and tram stops, with complete amenities and two parks within walking distance.

The lower level of the apartment features a living room with a skylight and views of the park and the Vinohrady Water Tower, a fully fitted kitchen, a storage room, a toilet, and an open entrance hall. The upper floor includes a **gallery**, two bedrooms with a two bathrooms (bathtub, walk-in shower, toilet), and a third bedroom separated by a glass door. Two bedrooms have access to a **terrace** overlooking the courtyard. There are stairs leading to the **roof terrace** offering far reaching views including the Petřín Hill and the Prague Castle.

**Oak parquet floors**, tiles, security entry door, gas boiler, underfloor heating in bathroom, built-in wardrobes in two bedrooms, dishwasher. Monthly deposit for service charges and energies CZK 5000.



\* Area of the unit according to the Civil Code. The area consists of the sum total area of the entire unit bounded by perimeter walls.