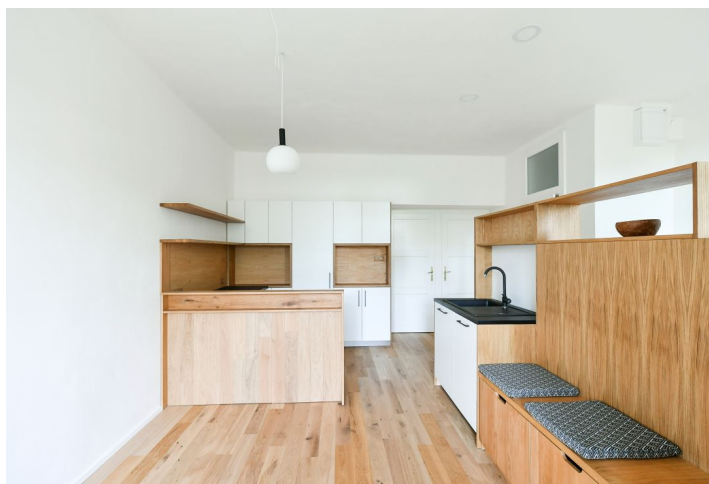
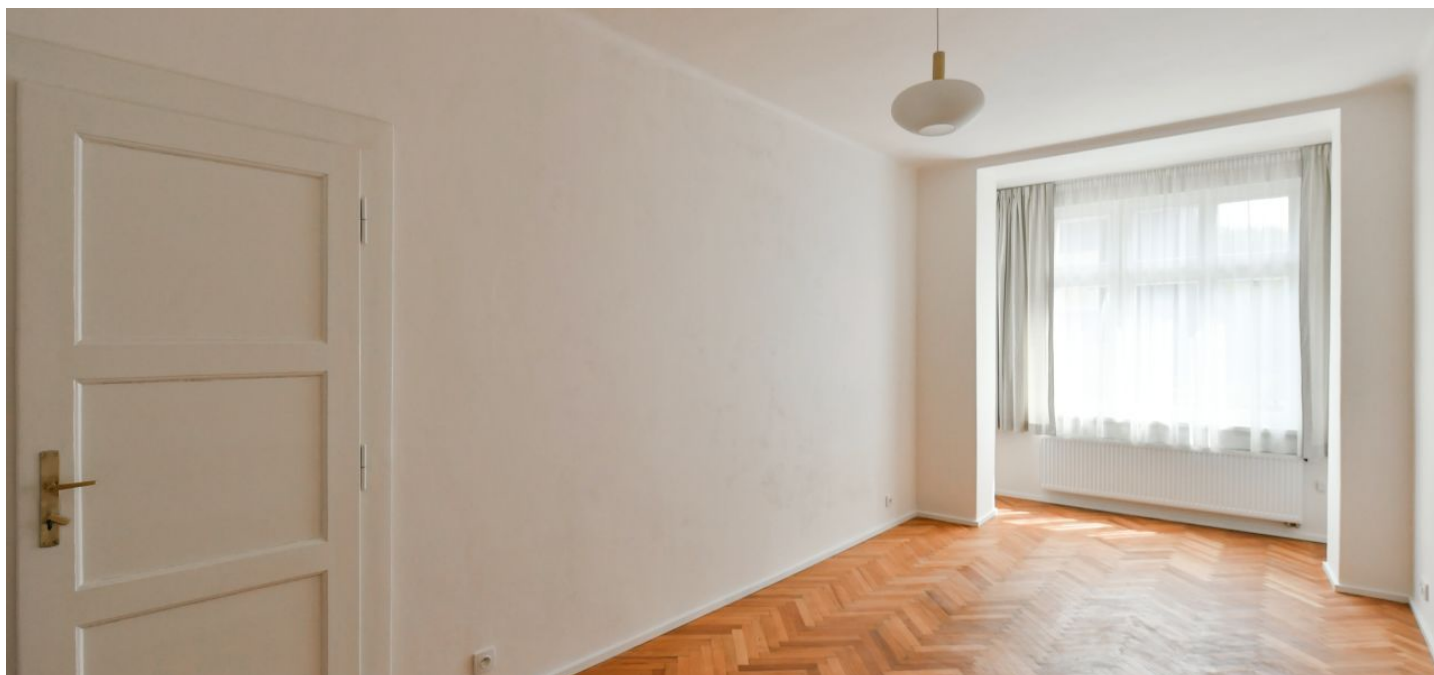




Apartment Two-bedroom (3+kk)

Rented

73 m², Prague 6, Břevnov, Nad Závěrkou





Apartment Two-bedroom (3+kk)

Rented

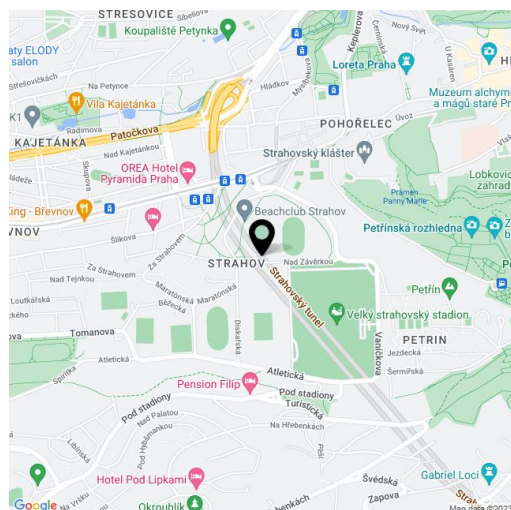
73 m², Prague 6, Břevnov, Nad Závěrkou

Total area	75 m ²
Floor area*	73 m ²
Loggia	2 m ²
Parking	-
Cellar	-
PENB	G
Reference number	39732
Available from	Immediately

Boasting an enclosed balcony and views of the surrounding greenery, this bright 2-bedroom apartment has been completely refurbished. Situated on the second floor of a renovated Functionalist building with a new facade (and no lift), in a quiet street in one of the most attractive residential areas of Prague 6, Břevnov, near a green park with a barbecue point and a playground. A popular location in close vicinity of the Prague Castle (just a short walk away), Ladronka Park and Strahov sports grounds, with quick access to the city center and full amenities within walking distance. Convenient access to the airport and international schools in Prague 5 and 6.

The interior features a living room / fully fitted open plan kitchen, two spacious bedrooms, a bathroom with a walk-in shower and a toilet, and an open entrance hall with storage and access to the enclosed balcony.

Hardwood floors, tiles, large windows, gas boiler, custom made wardrobes and storage, new kitchen. Deposit for service charges and water and internet CZK 1000/person/month. Monthly deposit for gas and electricity: CZK 3,000.



* Area of the unit according to the Civil Code. The area consists of the sum total area of the entire unit bounded by perimeter walls.