



Apartment Two-bedroom (3+kk)

Sold

97.9 m², Český Krumlov, Černá v Pošumaví





Apartment Two-bedroom (3+kk)

Sold97.9 m², Český Krumlov, Černá v Pošumaví

Total area	98 m ²
Parking	Possibility to purchase a parking space
Garage	Yes
Cellar	Yes
PENB	B
Reference number	39736

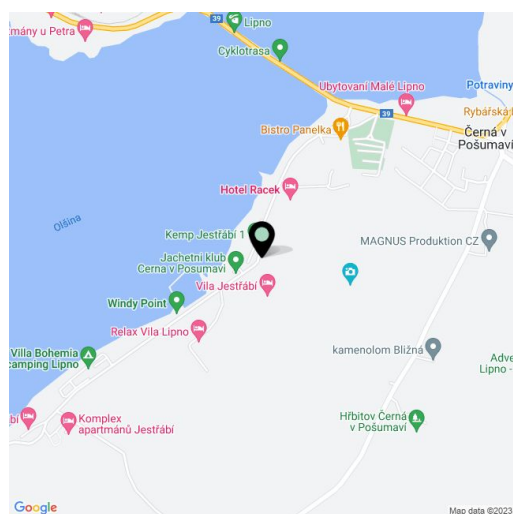
This new apartment is part of the Lakeside Apartments Lipno in Černá v Pošumaví. Finished to a high standard, the comfortable apartment offers unobstructed views of the largest Czech reservoir, a private beach, and a wellness area with a sauna and a pool. An attractive location right next to the Lipno Dam, near Český Krumlov and the Austrian border. The completion date is at the end of 2022.

The layout of the 1st floor apartment consists of a west-facing living room with a preparation for a kitchen, 2 bedrooms, a bathroom, a hallway, and a toilet.

The quality standard of the equipment includes insulated aluminum triple-glazed windows with outdoor aluminum blinds or shutters, above-standard **soundproofing** between the apartments, **oak floors**, a preparation for **cooling** and a smart home system, ceramic tiles, and Grohe and Laufen sanitary ware. **Eco-friendly underfloor heating** is provided by 16 geothermal wells that are 150 meters deep. The interior can be completed by an architect according to the client's requirements. Owners will be able to take advantage of management services, which, in addition to the usual cleaning and maintenance of common areas, also consists of as needed cleaning of individual apartments, a reception, and 24-hour assistance. It is possible to purchase a **cellar** and a **garage parking space**.

Černá v Pošumaví is part of the **Šumava Protected Landscape Area** and is located at the widest point of the **Lipno reservoir**. It is a popular tourist resort sought-after by lovers of yacht sailing, windsurfing, kiteboarding, and other **water sports**. In the vicinity, you can visit the Treetop Trail, bike park, family off-road bike trail, rope park, water park, bobsled track, and many other attractions. In winter, you can go **ice skating** or **skiing** nearby, such as in the Austrian Hochficht resort. The location is also attractive thanks to its proximity to **Český Krumlov** and the Austrian border.

Interior 97.9 m².



* Area of the unit according to the Civil Code. The area consists of the sum total area of the entire unit bounded by perimeter walls.



Apartment Two-bedroom (3+kk)

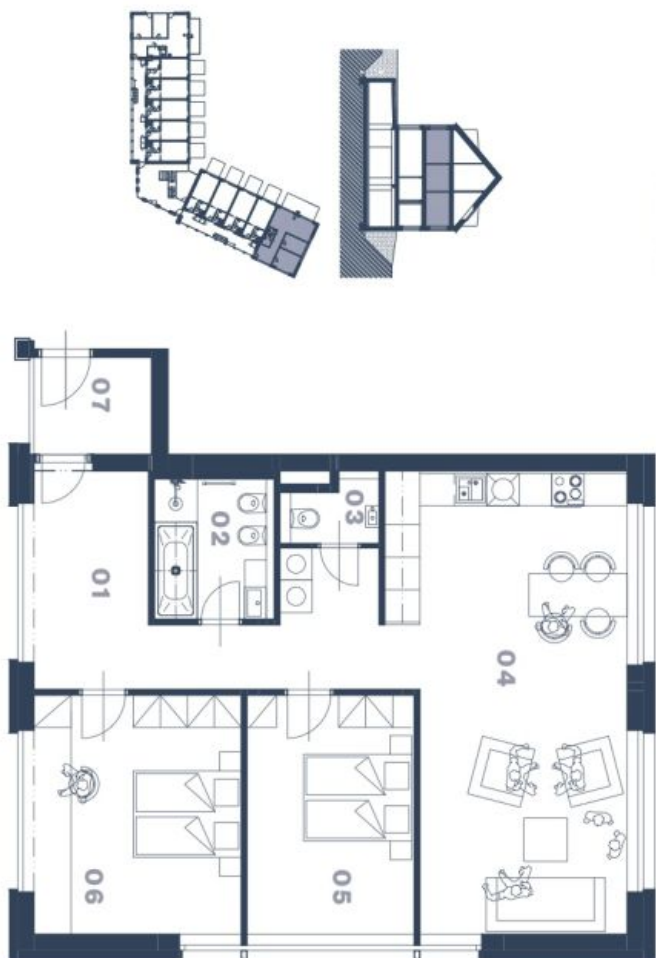
97.9 m², Český Krumlov, Černá v Pošumaví

Sold

lakesidelipno.cz
Na Perštyně 2, 110 00, Praha 1
+420 257 328 281 +420 724 551 238
info@lakesidelipno.cz



* Lakeside Lipno Apartments si vyhrazuje právo na změny. Všechny měřítelné informace jsou pouze orientační. Společnost Lipno Group, a.s. není zodpovědná za jakoukoli chybu nebo nepřesnost. Pro více informací kontaktujte makléře Svoboda & Williams nebo přímo společnost Svoboda & Williams s.r.o. IČO: 257328281.



ĽAKESIDE
LIPNO APARTMENTS

APARTMÁN 2.12

01	Hala	16,68 m ²
02	Koupelna	5,78 m ²
03	WC	2,04 m ²
04	Obytný prostor	35,57 m ²
05	Pokoj	13,73 m ²
06	Pokoj	17,01 m ²
07	Zadveří Příčky	3,86 m ² 3,23 m ²

CELKOVÁ PLOCHA 97,9 m²

svoboda&williams | CHRISTIE'S
INTERNATIONAL REAL ESTATE
Exkluzivní zastoupení: