



## Apartment Two-bedroom (3+kk)

Sold

99.1 m<sup>2</sup>, Český Krumlov, Černá v Pošumaví





## Apartment Two-bedroom (3+kk)

**Sold**99.1 m<sup>2</sup>, Český Krumlov, Černá v Pošumaví

Total area	116 m <sup>2</sup>
Floor area*	99 m <sup>2</sup>
Terrace	17 m <sup>2</sup>
Parking	Possibility to purchase a parking space
Garage	Yes
Cellar	Yes
PENB	B
Reference number	39742

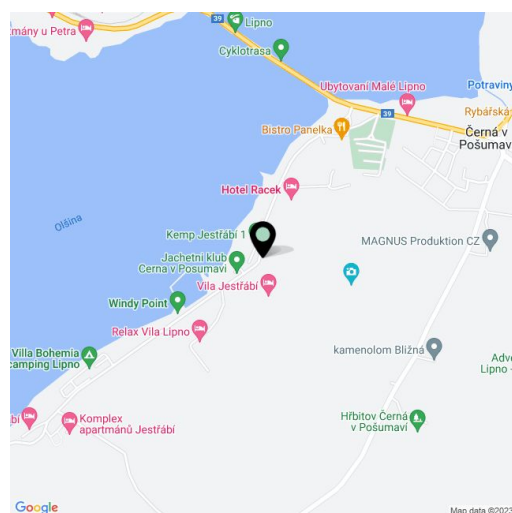
This new apartment with a terrace is part of the Lakeside Apartments Lipno in Černá v Pošumaví. Finished to a high standard, the comfortable apartment offers unobstructed views of the largest Czech reservoir, a private beach, and a wellness area with a sauna and a pool. An attractive location right next to the Lipno Dam, near Český Krumlov and the Austrian border. The completion date is at the end of 2022.

The layout of the ground floor apartment consists of a northwest-facing living room with a preparation for a kitchen, 2 bedrooms, a bathroom, a hallway, a foyer, and a toilet.

The quality standard of the equipment includes insulated aluminum triple-glazed windows with outdoor aluminum blinds or shutters, above-standard **soundproofing** between the apartments, **oak floors**, a preparation for **cooling** and a smart home system, ceramic tiles, and Grohe and Laufen sanitary ware. **Eco-friendly underfloor heating** is provided by 16 geothermal wells that are 150 meters deep. The interior can be completed by an architect according to the client's requirements. Owners will be able to take advantage of management services, which, in addition to the usual cleaning and maintenance of common areas, also consists of as needed cleaning of individual apartments, a reception, and 24-hour assistance. It is possible to purchase a **cellar** and a **garage parking space**.

Černá v Pošumaví is part of the **Šumava Protected Landscape Area** and is located at the widest point of the **Lipno reservoir**. It is a popular tourist resort sought-after by lovers of yacht sailing, windsurfing, kiteboarding, and other **water sports**. In the vicinity, you can visit the Treetop Trail, bike park, family off-road bike trail, rope park, water park, bobsled track, and many other attractions. In winter, you can go **ice skating** or **skiing** nearby, such as in the Austrian Hochficht resort. The location is also attractive thanks to its proximity to **Český Krumlov** and the Austrian border.

Interior 99.1 m<sup>2</sup>, terrace 17 m<sup>2</sup>.



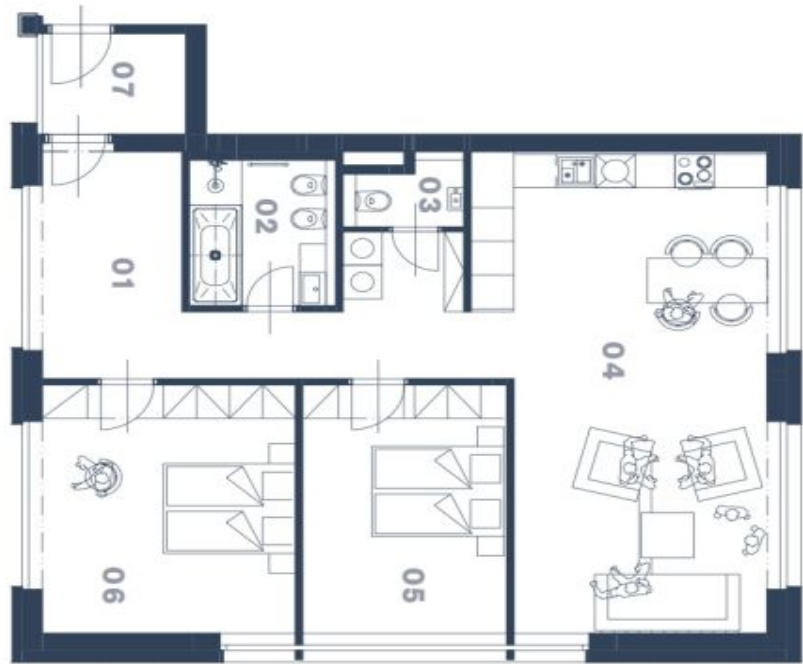
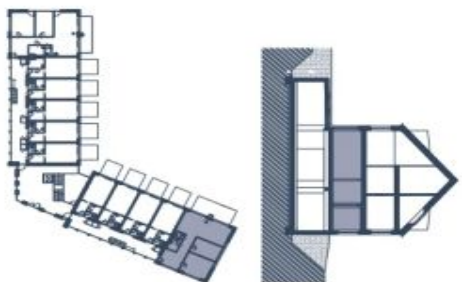
\* Area of the unit according to the Civil Code. The area consists of the sum total area of the entire unit bounded by perimeter walls.



# Apartment Two-bedroom (3+kk)

Sold

99.1 m<sup>2</sup>, Český Krumlov, Černá v Pošumaví



**lakesideipno.cz**

Na Perštyně 2, 110 00 Praha 1  
+420 257 328 281 +420 724 561 238  
info@lakesideipno.cz

**ĽAKESIDE**  
LIPNO APARTMENTS

## APARTMÁN 1.12

01	Hala	1668 m <sup>2</sup>
02	Koupeľna	5,78 m <sup>2</sup>
03	WC	2,04 m <sup>2</sup>
04	Obytný priestor	36,77 m <sup>2</sup>
05	Pokoj	13,73 m <sup>2</sup>
06	Pokoj	17,01 m <sup>2</sup>
07	Zároveň Príčky	3,86 m <sup>2</sup> 3,23 m <sup>2</sup>

CELKOVÁ PLOCHA		99,1 m <sup>2</sup>
NEZAPOČÍTENO		
Terasa		17 m <sup>2</sup>

\* Lakeside Lipno Apartments si vyhradzuje právo na zmeny. Všetky možnosti a informácie pre potrebu orientácie, dovozu a poplatky najmä ceny za parkovanie nie sú záväzné. Celková plocha apartmánu je včítane plochy príček a vonkajších priestorov sídla de vidieť na náčrte 1898/2019 SLA.

svoboda&williams | CHRISTIE'S  
INTERNATIONAL REAL ESTATE  
Exkluzívni zástupcovia: