



## Apartment Four-bedroom (5+kk)

Rented

217.28 m<sup>2</sup>, Prague 1, Nové Město, Senovážné náměstí





## Apartment Four-bedroom (5+kk)

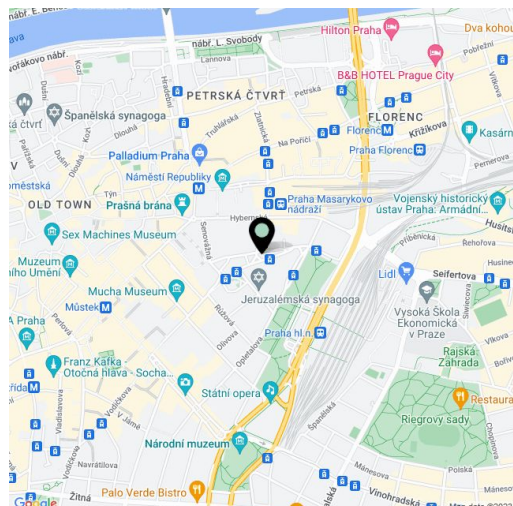
**Rented**217.28 m<sup>2</sup>, Prague 1, Nové Město, Senovážné náměstí

Total area	217 m <sup>2</sup>
Parking	Garage parking (lift system).
Garage	Yes
Cellar	Yes
Service price	Common building charges, heating and water approx. 13,500 per month. Electricity is transferred to the tenant.
PENB	G
Reference number	39802
Available from	Immediately

**High standard unfurnished modern flat with views of Senovážné náměstí Square, on the 3rd floor of an unique residence with 24/7 reception, and just a few minutes walk from Wenceslas Square and the historical center, with shops, restaurants and cultural opportunities in the immediate vicinity.**

The apartment offers a spacious and bright living room overlooking Senovážné náměstí Square, modern, fully equipped kitchen, 3 courtyard-facing bedrooms (the master bedroom has an en suite bathroom), study, second bathroom, an entry hall and separate toilet for guests.

Plenty of built-in storage space, quality materials, solid wood flooring, tiles, underfloor heating in the bathrooms and kitchen, washer, dryer, alarm, video intercom, 24 hour reception. Two **garage parking** spaces included in the rent.



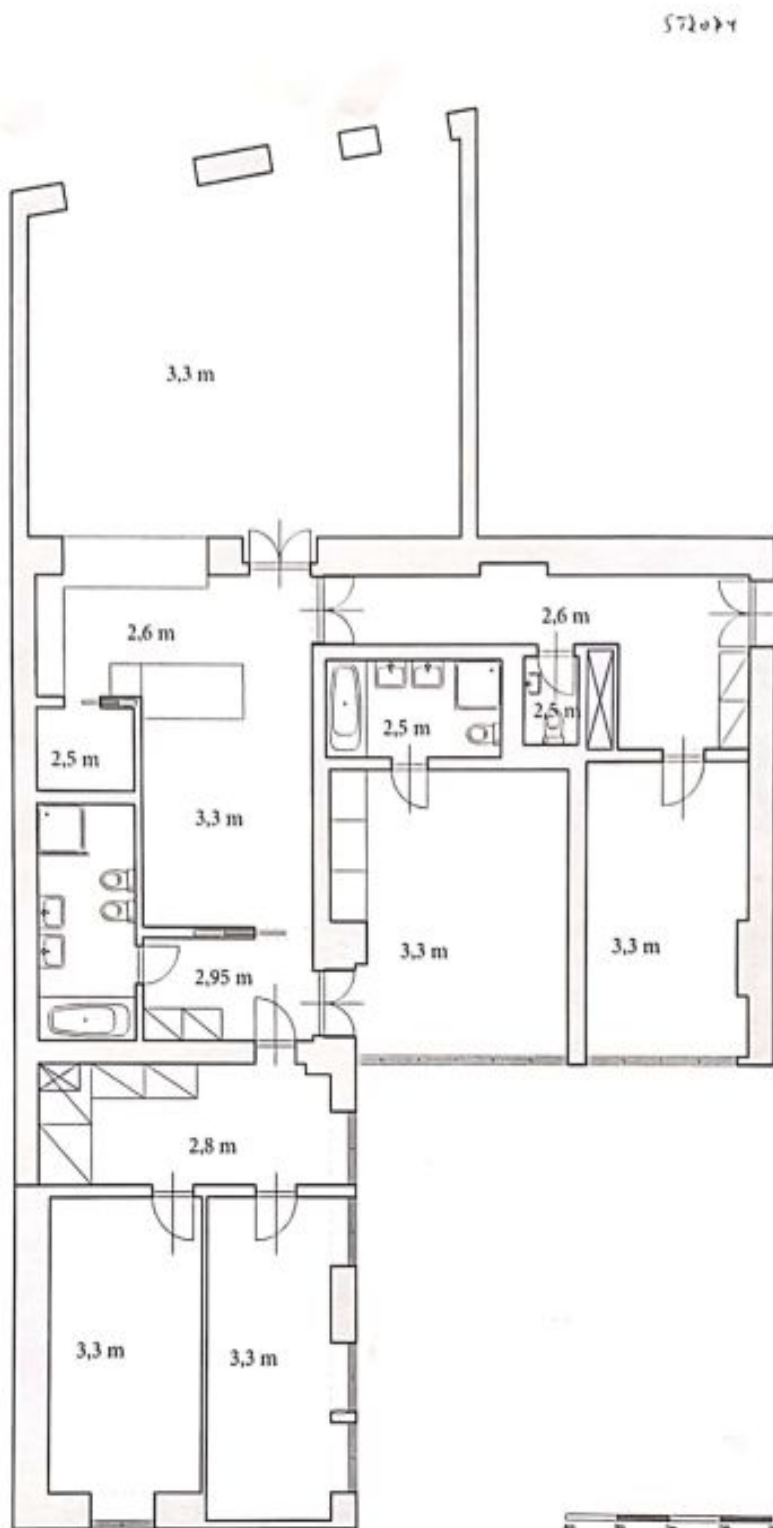
\* Area of the unit according to the Civil Code. The area consists of the sum total area of the entire unit bounded by perimeter walls.



## Apartment Four-bedroom (5+kk)

Rented

217.28 m<sup>2</sup>, Prague 1, Nové Město, Senovážné náměstí



PŮVODNÍ STAV

Skenovano pomoci CamScanner