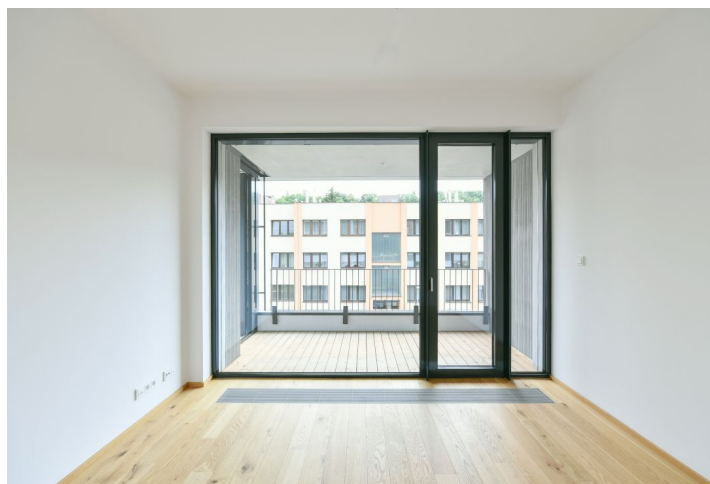




Apartment Two-bedroom (3+kk)

Rented

88.3 m², Praha 6, Střešovice, Na Dračkách





Apartment Two-bedroom (3+kk)

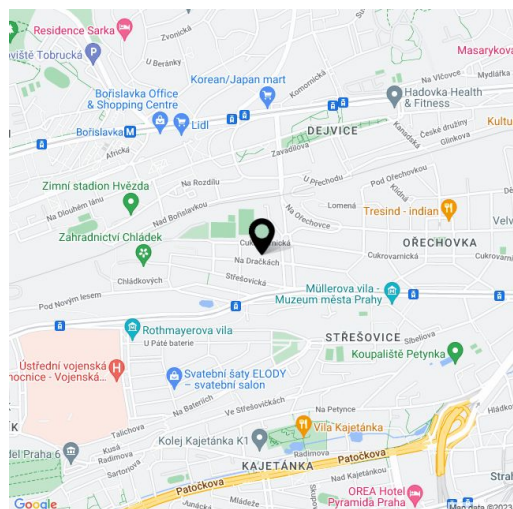
Rented88.3 m², Praha 6, Střešovice, Na Dračkách

| | |
|------------------|-------------------|
| Total area | 95 m ² |
| Floor area* | 88 m ² |
| Terrace | 7 m ² |
| Parking | Garage parking. |
| Garage | Yes |
| Cellar | Yes |
| PENB | G |
| Reference number | 39840 |
| Available from | Immediately |

New high-standard bright unfurnished 2-bedroom apartment with a terrace and 1 garage spaces situated on the 3rd floor of a modern and high quality residential complex with 24-hours reception, created according to the QARTA architecture studio in a premium location in the Ořechovka residential district in Prague 6 on the border of Střešovice and Dejvice. Lots of greenery, within easy driving distance are kindergartens and primary schools as well as a grammar school, Riverside School Prague - Junior High or ISP (International School of Prague), shops, medical services, easy access to the airport.

The layout consists of a large living room with fully equipped kitchen, dining area and access to the **terrace**, 2 bedrooms (1 with access to the terrace), bathroom with bathtub, toilet and bidet shower, utility room prepared for the washing machine and the dryer, the entrance hall and a cellar.

In a high standard, **wooden floors and tiles, Siemens** kitchen appliances (incl. Induction hobs, microwave oven, dishwasher), floor-to-ceiling windows with **el. controlled blinds**, alarm, built-in wardrobes in the bedrooms and the hall. Preparation for the A/C. **Real estate project of 2020 - The best project in the Czech Republic.** A room for strollers and bikes, security cameras. Common building charges, heating and water CZK 4,500 / month, electricity is paid separately. One **garage space and a cellar** included.



* Area of the unit according to the Civil Code. The area consists of the sum total area of the entire unit bounded by perimeter walls.



Apartment Two-bedroom (3+kk)

Rented

88.3 m², Praha 6, Střešovice, Na Dračkách

MĚŘÍTKO 1 : 75

