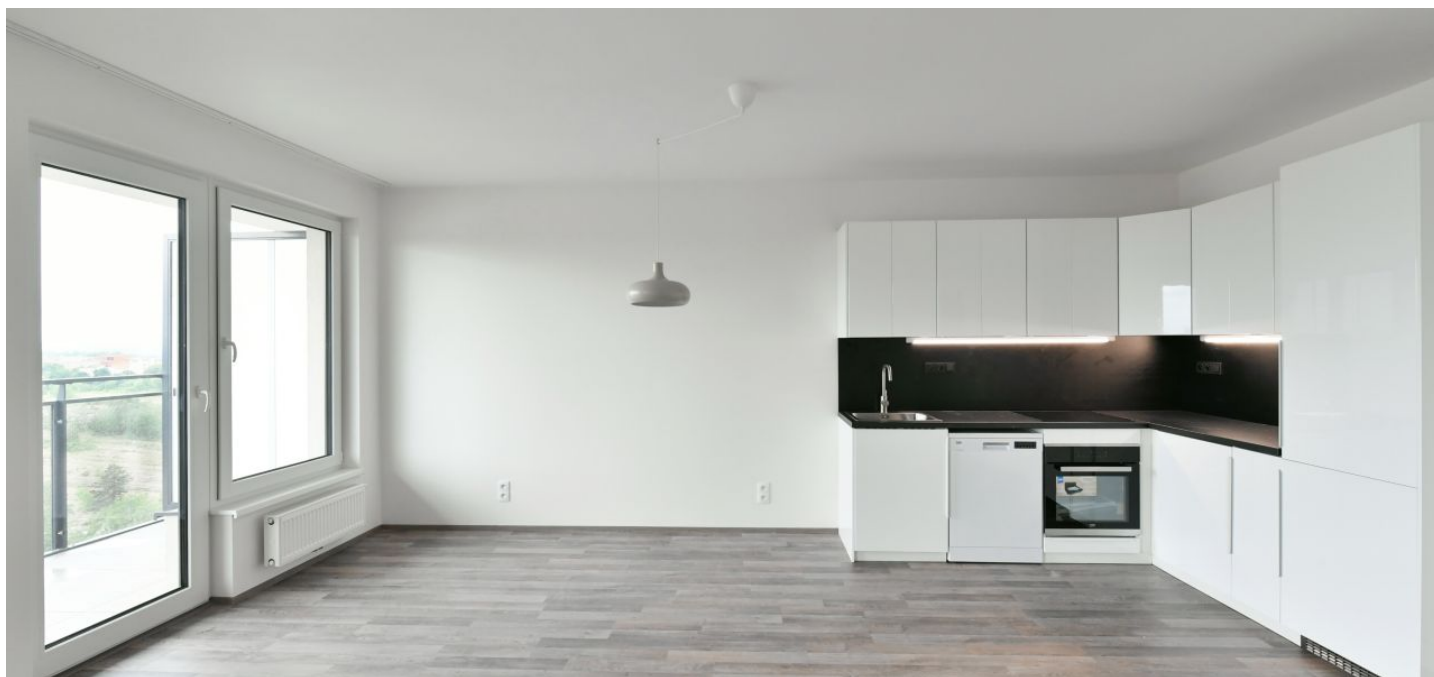




## Apartment One-bedroom (2+kk)

Rented

101 m<sup>2</sup>, Prague 3, Strašnice, Zvěřinova





## Apartment One-bedroom (2+kk)

Rented

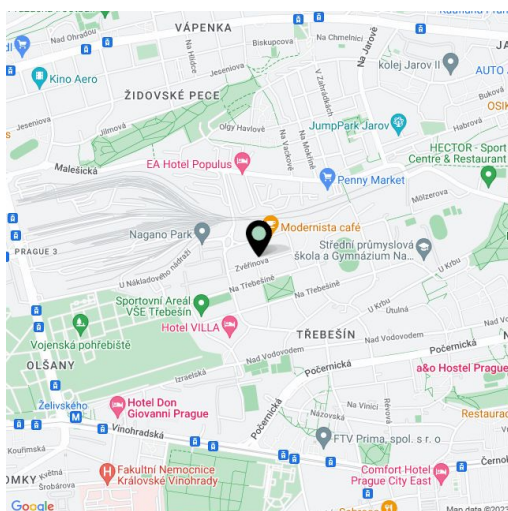
101 m<sup>2</sup>, Prague 3, Strašnice, Zvěřinova

Total area	116 m <sup>2</sup>
Floor area*	101 m <sup>2</sup>
Balcony	15 m <sup>2</sup>
Parking	Garage parking.
Garage	Yes
Cellar	Yes
PENB	B
Reference number	39842
Available from	Immediately

Spacious unfurnished 1-bedroom apartment with two balconies and nice views on the 9th floor of the recently built Tulipa Třebešín residential project. Situated on the edge of a quiet and green residential area on the Strašnice and Vinohrady neighborhoods divide. Location with full amenities within easy reach and bus connections to the city center, a few steps from Jiřího Karna Park, about a 10 minute walk to Želivského metro station and Malešický Park.

The apartment includes a living room with fully equipped kitchen, 1 bedroom, a walk-in closet, bathroom with tub and a toilet, an entrance hall and two balconies (one with access from the living room and one from the bedroom).

Laminated floating floors and tiles, french windows, central heating, dishwasher, **cellar**. A **garage parking space** is included. Monthly deposit for common building charges, water and heating: CZK 4,800. Electricity is billed separately.



\* Area of the unit according to the Civil Code. The area consists of the sum total area of the entire unit bounded by perimeter walls.