



Office building

Rented

Praha 1, Nové Město, Masarykovo nábřeží





Office building

Praha 1, Nové Město, Masarykovo nábřeží

Rented

Service price	138 CZK monthly per m ²
Tenant consumption	—
Parking	5 000 CZK
Parking service charges	—
Parking ratio	—
Certification	—
PENB	G
Reference number	39869

Office space for lease with excellent transport accessibility and direct views of Prague Castle. The offices are bright and airy with high ceilings and large windows. A 24/7 reception, kitchen for employees, openable windows, elevator, and parking is available in the building.

Location:

Excellent accessibility by public transport. The Národní divadlo tram stop is right next to the building and the Jiráskovo náměstí tram stop is nearby. The Národní třída metro station (line B) is a 7-minute walk away.

Features and services:

24/7 reception
Parking
Kitchen
Elevator
Openable windows

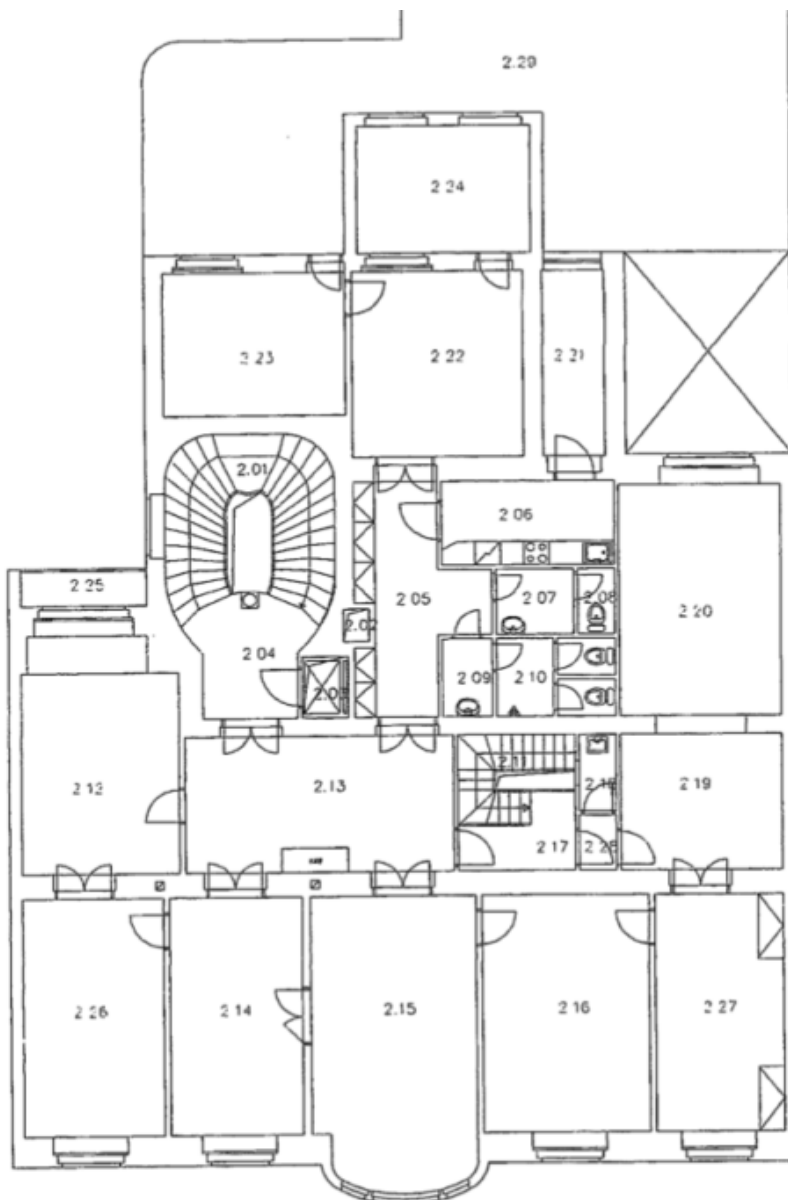
Rental and service charges listed without VAT. Lessee pays no commission.



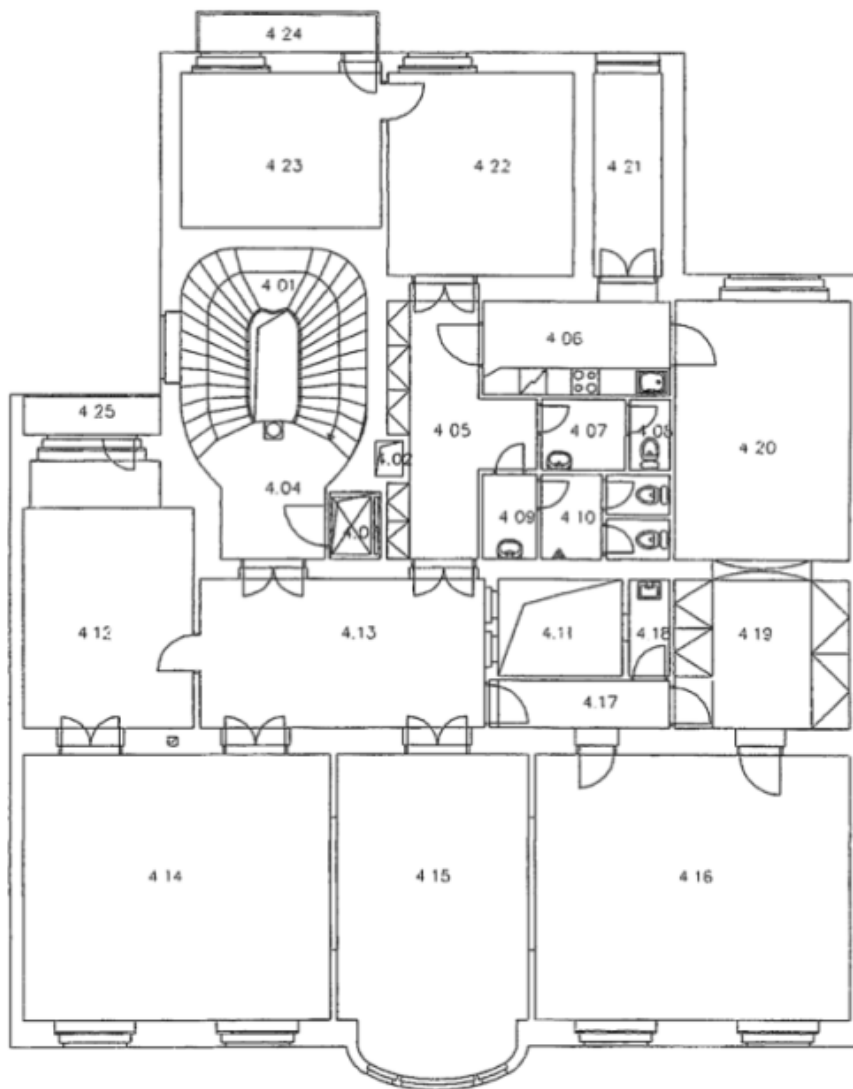
Office building

Praha 1, Nové Město, Masarykovo nábřeží

Rented



2.NP - I PATRO



4 NF – 3 PATRO