



Apartment One-bedroom (2+1)

Rented

52.5 m², Prague 1, Nové Město, Palackého





Apartment One-bedroom (2+1)

Rented

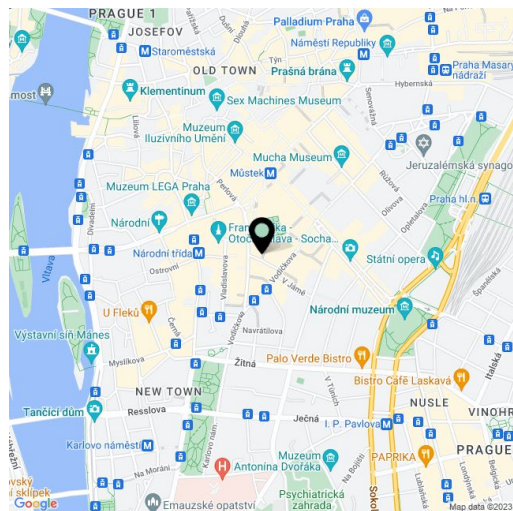
52.5 m², Prague 1, Nové Město, Palackého

Total area	80 m ²
Floor area*	53 m ²
Terrace	27 m ²
Parking	-
Cellar	-
PENB	G
Reference number	39990
Available from	Immediately

This air-conditioned, fully newly refurbished 1-bedroom apartment with terrace is situated on the 6th floor of a Functionalist residential building with a lift right in the heart of Prague. Located just a few steps from Wenceslas Square with the Muzeum and Můstek metro stations, the Franciscan Garden, the popular Myšák Confectionery and Gallery, and the Quadrio shopping mall. A prestigious address close to the Lucerna cinema and concert club, several theaters and numerous shops, boutiques, bistros, restaurants and more.

The interior features a living room with access to the terrace, fully fitted kitchen, one bedroom with terrace access, a walk through shower bathroom, separate toilet with bidet shower, a closet and the entrance hall.

Oak parquet floors, terrazzo tiles, inductional hob, dishwasher, washing machine with dryer, alarm, security entrance door, roman blinds. Monthly deposit for service charges and heating: CZK 2,500. Electricity is paid separately.



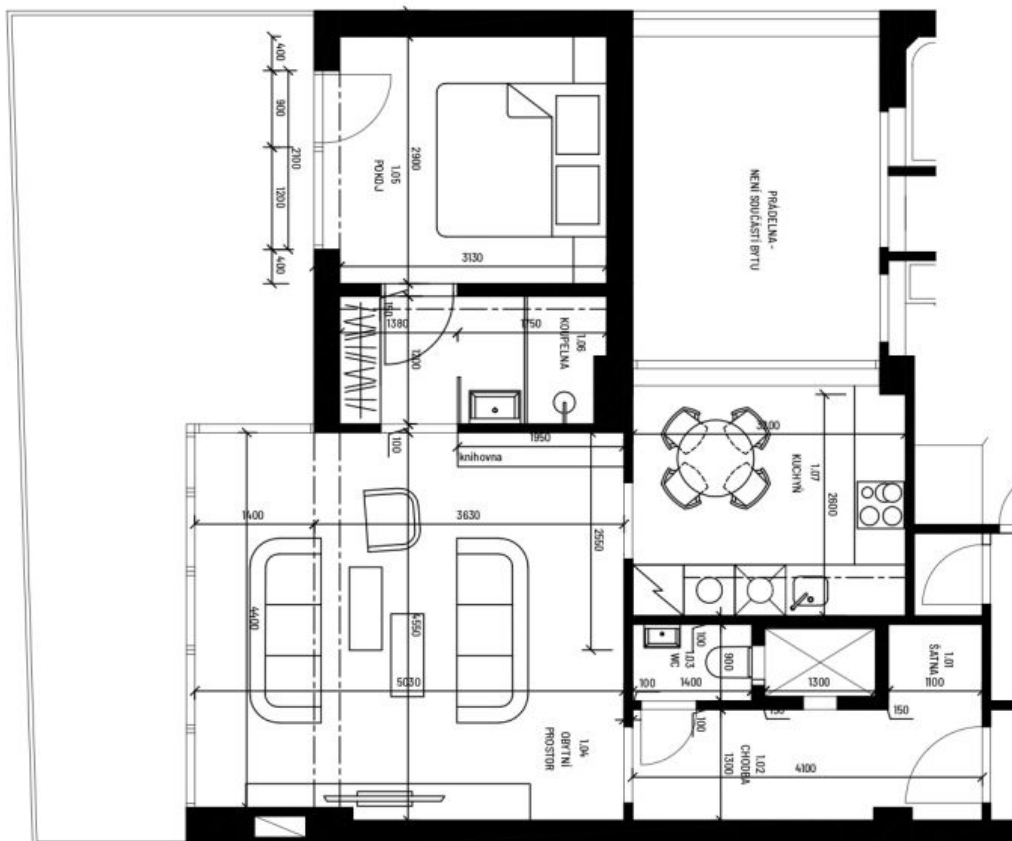
* Area of the unit according to the Civil Code. The area consists of the sum total area of the entire unit bounded by perimeter walls.



Apartment One-bedroom (2+1)

52.5 m², Prague 1, Nové Město, Palackého

Rented



TABULKA MÍSTNOSTÍ

č. m.	název	plocha m ²
1.01	SPALOVNA	11
1.02	CHODBA	5,3
1.03	WC	1,3
1.04	OBYTNÍ PROSTOR	24,0
1.05	POKOJ	10,5
1.06	KOUPELNA	1,6
1.07	KUCHYŇ	8,7
CELKEM [m ²]		52,5