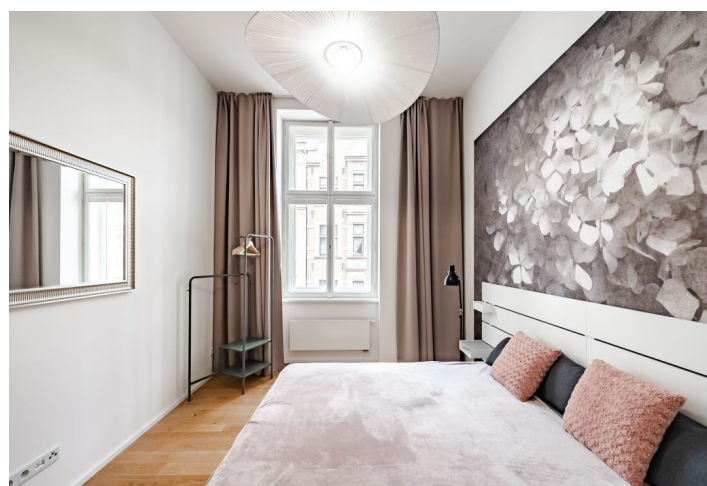




Apartment Two-bedroom (3+kk)

Rented

87 m², Prague 1, Nové Město, Opletalova





Apartment Two-bedroom (3+kk)

Rented

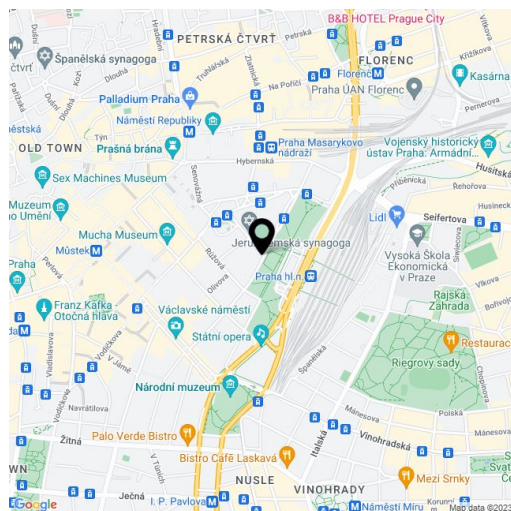
87 m², Prague 1, Nové Město, Opletalova

Total area	87 m²
Parking	-
Cellar	Yes
PENB	D
Reference number	40033
Available from	Immediately

This is a stylish, well-designed, completely furnished 2-bedroom apartment on the 2nd floor of the refurbished Neo-Renaissance building - Residence Opletalova. The building was designed by the renown architect studio OOOOX. Located in the very center of Prague in the immediate vicinity of Wenceslas Square, just steps from Vrchlického sady Park and the Prague Main Railway Station, with instant access to all three Prague metro lines and full amenities.

The architect designed (Nosek & Raffelova architekti) apartment includes a living room with an open plan kitchen and dining area, **2 bedrooms** (one with a sleeping deck), a bathroom with shower and toilet, a guest toilet and the entrance hall.

Quality equipment and finishing, wooden parquets and tiles, soundproofed windows, central heating, **heat recovery system**, dishwasher, microwave oven, **washing machine, dryer**, TV. Security camera system in the building. A **cellar** available. Monthly deposit for service charges, heating and water: CZK 3,400/month. Electricity is billed separately.



* Area of the unit according to the Civil Code. The area consists of the sum total area of the entire unit bounded by perimeter walls.