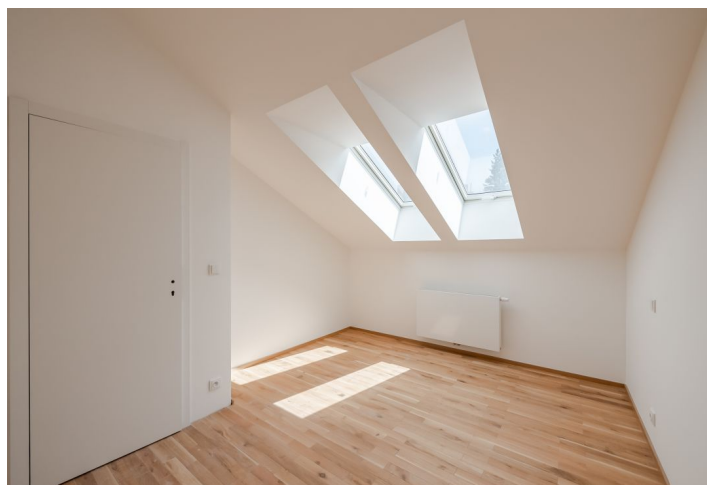
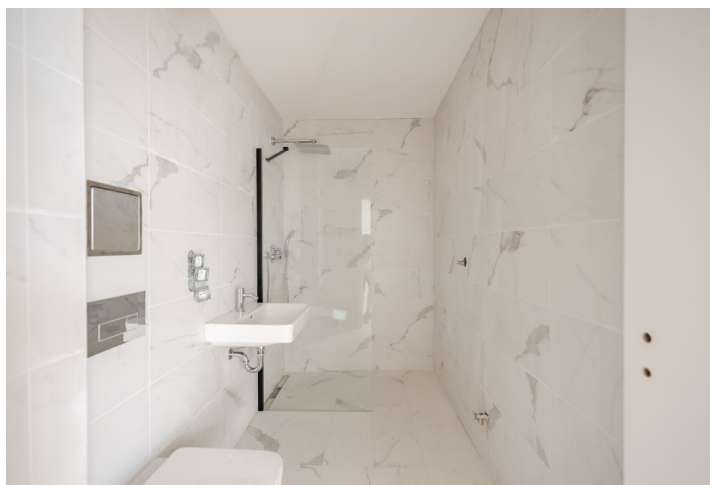
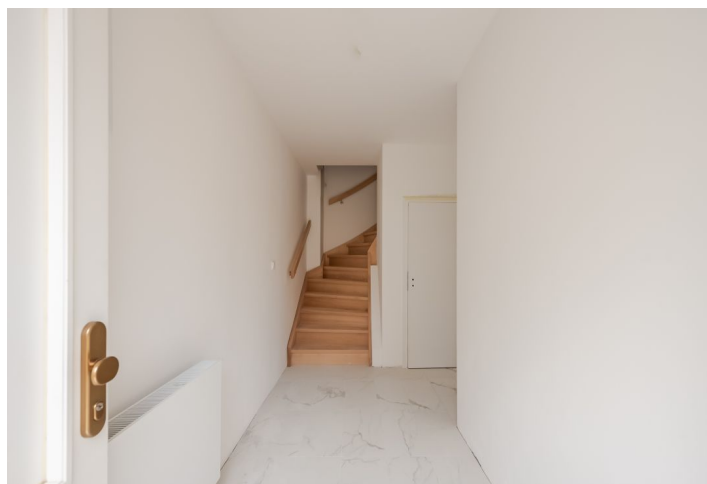




Apartment Two-bedroom (3+kk)

Sold

74.2 m², Prague 2, Vyšehrad





Apartment Two-bedroom (3+kk)

Sold74.2 m², Prague 2, Vyšehrad

Total area	74 m ²
Parking	-
Cellar	-
PENB	G
Reference number	40060

* Area of the unit according to the Civil Code. The area consists of the sum total area of the entire unit bounded by perimeter walls.

This southeast-facing 2-bedroom duplex apartment with views of the greenery is located on the 3rd and 4th floors of a recently completed residence that was created through the sensitive reconstruction of a historic courtyard house in an attractive location near Vyšehrad, on a hillside on large Lumírový Sady Park and within walking distance from a metro station and tram stop.

On the entrance level, the layout consists of an open space (on the 2nd floor of the building) with a living room, dining area, and kitchen, an entrance and staircase hall, and a separate toilet. On the upper level, there are two separate bedrooms and a bathroom (with a shower and toilet).

Facilities will include **wooden floors** (oiled oak), designer sanitary ware, and wooden casement windows. The entrance to the apartments will be from elegant common areas.

The location boasts plenty of greenery—**Lumírový Sady Park** is right next to the building and **Vyšehradské Sady Park** is nearby. It is also close to the **Na Bělce** or **Folimanka parks**. There are cafes, restaurants, shops, and offices in the area, and the Congress Center, where you can rent a garage, is close-by. The Vyšehrad metro station (line C) or to the Ostrčilovo náměstí tram stop can be reached on foot in just a few minutes.

Floor area 74.2 m².

In addition to regular property viewings, we also offer real-time video viewings via WhatsApp, FaceTime, Messenger, Skype, and other apps.



Apartment Two-bedroom (3+kk)

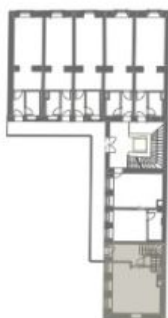
74.2 m², Prague 2, Vyšehrad

Sold



BYT č. 3.7 - 3+kk

Umístění bytu v objektu
3.NP



Podlahová plocha bytu 74,2 m²